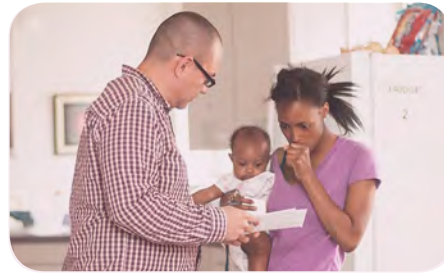


FY14 YEAR IN REVIEW

The Night Ministry's FY14 Annual Report



FORWARD

Dear Friends,

FY14 was a pivotal year in The Night Ministry's rich history.

The Health Outreach Bus, Youth Outreach Van and our four youth shelter programs continued to see large numbers of individuals who needed our life-saving services.

We launched a successful campaign to purchase a new Health Outreach Bus. The new Bus will help us to reliably provide free health care on the streets of Chicago and build relationships with more of the city's most vulnerable residents. The campaign will also allow us to add a fifth night of Health Outreach Services during FY15 and deepen our services in several exciting ways.

This year we also celebrated the premiere of the documentary film "The Homestretch" at film festivals in Toronto, Washington, DC, and New York City. "The Homestretch", which features our emergency overnight youth shelter, The Crib, respectfully illustrates the issues resulting in over one million young people experiencing homelessness every year in this country.

The brutal, dangerous winter that we experienced this year showed us the importance of The Night Ministry's work. We were able to expand our programming during each of Chicago's cold weather emergencies to make sure that youth had a safe, warm place to sleep, that individuals on the streets knew how to access emergency shelter and, if they chose not to enter a shelter, had the supplies they needed to survive. When the cold weather prevented our buses and vans from operating, our staff used their own cars to make sure services were uninterrupted, meals were served and warm clothing was distributed.

FY14 also posed some challenges. Several Chicago-based foundations and corporations announced that, as the economy begins to recover, they plan to shift their funding priorities away from the provision of basic needs, such as emergency housing, outreach, health care and access to food. At The Night Ministry, we know our communities require these services just as much now as they have in the past. This decision, and the impact that it will have on Chicago's safety net of social services, is concerning.

Thank you for your support, which is essential to the work we do. Because of you, we are able to impact the lives of our most at-risk neighbors. You help The Night Ministry continue to be a presence in Chicago for those who are alone, those who are poor and those who are homeless.

With tremendous gratitude,



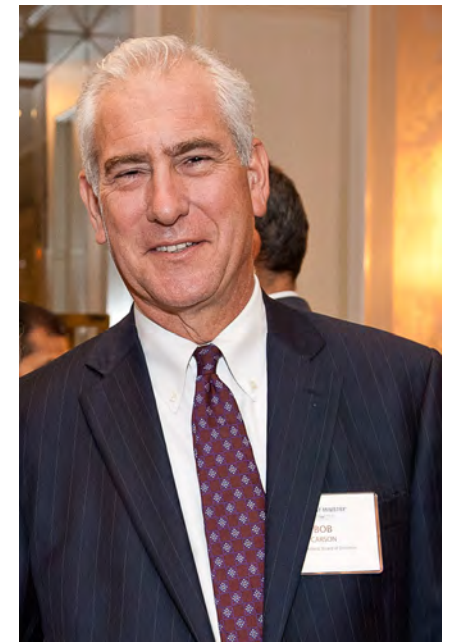
Paul W. Hamann
President & CEO



Robert A. Carson
2014 Board Chair



Paul W. Hamann, President & CEO



Robert A. Carson, Board Chair

FINANCIALS

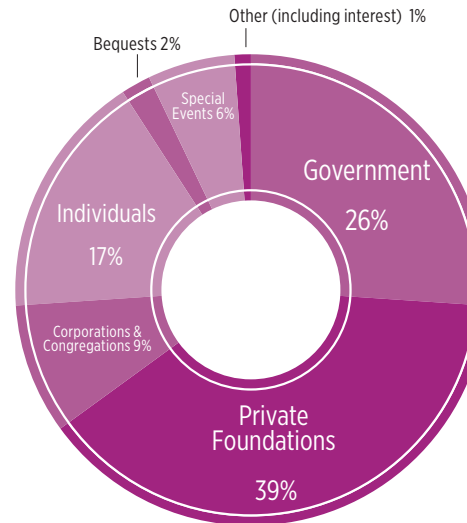
REVENUE

Grants & Contracts	
Government	\$1,394,169
Private Foundations	\$2,085,968
Corporations & Congregations	\$488,762
Total Grants & Contracts	\$3,968,899
Individuals	\$912,765
Bequests	\$96,450
Special Events	\$311,243
Other (Including Interest)	\$ 27,101
Total Revenue	\$5,316,458

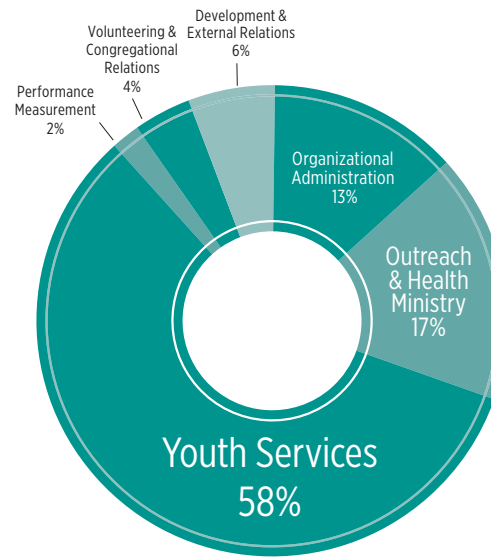
CASH EXPENSES BY FUNCTIONAL AREA

Outreach & Health Ministry	
HIV Prevention & Testing	\$291,831
Medical Services	\$347,939
Bus Outreach	\$284,921
Total for Outreach & Health Ministry	\$924,691
Youth Services	
Open Door Shelter - West Town	
STEPS - Transitional Living Program	\$455,534
Interim Program	\$968,562
After Care	\$52,611
Total for Open Door Shelter - West Town	\$1,476,707
Youth Outreach Team	\$286,946
Response-Ability Pregnant & Parenting Program	\$767,747
The Crib Overnight Youth Shelter	\$582,528
Total for Youth Services	\$3,113,928
Performance Measurement	\$107,882
Volunteering & Congregational Relations	\$234,561
Development & External Relations	\$315,591
Organizational Administration	\$686,925
Total Operating Expenses by Functional Area	\$5,383,578
Cash Surplus (Deficit)	(\$67,120)
Depreciation	\$224,398
Total Deficit	(\$291,518)

SOURCES OF INCOME



USES OF FUNDS



Financials are based on FY14 audited statements and exclude \$817,897 of donations made to the Campaign for The Night Ministry's Bus. The cash operating deficit was funded by a FY13 grant which was designated for FY14 operations.

THE CAMPAIGN FOR THE NIGHT MINISTRY'S BUS

During FY14, President & CEO Paul W. Hamann announced The Campaign for The Night Ministry's Bus. This \$750,000 Campaign aimed to fund a new Health Outreach Bus (\$292,000) and expanded Health Outreach Services (\$458,000) for our Health Outreach Program. In just eight months, The Night Ministry raised \$817,897 - a total of \$67,897 more than the initial goal. The additional \$67,897 will help to support the Health Outreach Program.

We are proud to share that the Bus Campaign received 100% participation from our Board of Directors. Board Members raised \$131,278 collectively, and each Board Member gave at least \$1,000 to the Bus Campaign on top of their annual commitment. In addition to The Night Ministry's Board of Directors, The Night Ministry has many others to thank for supporting the Campaign.

- Anonymous (2)
- A. Montgomery Ward Foundation
- Betty Jean & Bayard Ashton
- Marc Brown & Joann Nemerovski
- Charles River Associates
- Adrienne Cozette
- Edward A. and Evelyn M. Dik Family Foundation
- First Presbyterian Church of Lake Forest
- Rebecca Gilman
- Haeger Family Foundation
- Elizabeth Harrington
- Karen Horan
- Impact 100 Chicago
- Joseph & Bessie Feinberg Foundation
- Rebecca & Steve Kismohr
- Mike Linder
- Michael Reese Health Trust
- Susan & Mark Neaman
- Eileen O'Neill
- Anne F. Pollock
- Dana Preston
- Schultz Family Private Foundation
- The John R. Houlby Foundation
- Unity in Chicago
- June & Beth Ver Schave
- Ed Vladich
- Vicki Weyhrich & Darrell Splithoff
- Witucke-Kranz Family
- Shelley Ziack

STEPS - TRANSITIONAL LIVING PROGRAM



STEPS - Transitional Living Program provides youth ages 18-21 with up to two years of stable, supportive housing. During FY14, 12 young people and four of their children found housing at STEPS. These young people were invited to stay for up to two years while they developed life skills such as budgeting, parenting, cooking and cleaning. 100% of STEPS residents participated in community service and many worked and attended school as well.

FEBRUARY

MON

TUE

WED

THUR

FRI

SAT

SUN

1

2
GROUNDHOG DAY

3

4

5

6

7

8

9

10

11

12
LINCOLN'S BIRTHDAY

13

14
VALENTINE'S DAY

15
Be a light for Chicagoans facing poverty. Give today.



16
PRESIDENTS' DAY

17

18
ASH WEDNESDAY

19

20

21

22

23

24

25

26

27

28

MIKE DEFINES HIS OWN SUCCESS



“I worked with The Night Ministry’s Case Manager to get my apartment. I have keys for the first time in years. It’s a small place but it’s everything I need and I am proud.”

-Mike, Health Outreach Bus Visitor, Humboldt Park Stop

MARCH

MON

TUE

WED

THUR

FRI

SAT

SUN

1

2

3

4

5 *PURIM*

6

7

8 *DAYLIGHT SAVINGS
TIME BEGINS*

9

10

11

12

13

14

15 
*Be a light for Chicagoans
facing poverty. Give today.*

16

17 *ST. PATRICK'S DAY*

18

19

20

21

22

23
/ 30

24
/ 31

25

26

27

28

29 *PALM SUNDAY*

VOLUNTEERS



During FY14, volunteers spent more than 30,000 hours serving meals at our programs, teaching classes in our shelters and lending a hand in our administrative offices. Meal groups served 99,350 individual meals to Health Outreach Bus visitors, young people at Youth Outreach and youth at The Crib. The Night Ministry's Board of Directors and Associate Board also provided leadership and support to The Night Ministry. We are so thankful for all of those who give their time to help make our mission possible!

APRIL

MON

TUE

WED

THUR

FRI

SAT

SUN

1

2

3

GOOD FRIDAY

4

PASSOVER BEGINS

5

EASTER SUNDAY

6

7

8

9

10

11

PASSOVER ENDS

12



13

VOLUNTEER
APPRECIATION
WEEK BEGINS

14

15

Be a light for Chicagoans
facing poverty. Give today.

16

17

18

19

20

21

22

23

24

25

26

27

28

29

30

RESPONSE-ABILITY PREGNANT & PARENTING PROGRAM

In FY14, 61 pregnant and parenting youth and 40 of their children found safe shelter at the Response-Ability Pregnant and Parenting Program (RAPPP). 82% of new moms attended at least one life skills class to strengthen their parenting skills. 70% of youth expanded their support network by increasing at least one supportive relationship in their life. Young mothers with a strong social network are less likely to experience additional episodes of homelessness. RAPPP continues to be the only shelter program in Chicago that reserves beds for pregnant and parenting minors.



MAY

MON

TUE

WED

THUR

FRI

SAT

SUN

1

2

3

4

5

6

7

8

9

10

MOTHER'S DAY



15

Be a light for Chicagoans facing poverty. Give today.

16

17

11

12

13

14

16

17

18

19

20

21

22

23

SHAVUOT BEGINS

24

25 MEMORIAL DAY / SHAVUOT ENDS

26

27

28

29

30

31

LIGHTING UP THE NIGHT AWARDS DINNER



Yasmin
Clarke
Youth Worker Supervisor, Open
Door Shelter Lakeview

On June 3, 2014, more than 400 supporters joined The Night Ministry at Four Seasons Chicago for Lighting Up the Night 2014. Ken Perlmutter, Founder and President of PERL Mortgage, Inc., chaired the event. Chicago Sun-Times Columnist, Neil Steinberg, was the emcee. The Night Ministry happily recognized the follow individuals and groups: Janine Landow-Esser (President's Award), Winston & Strawn LLP (Outstanding Corporate Partner Award), and LakeView Lutheran Church (Outstanding Community Partner Award). We hope you will join us at The Standard Club on June 4, 2015 for Lighting Up the Night 2015!

JUNE

MON

TUE

WED

THUR

FRI

SAT

SUN

1

2

3

4

5

6

7

*Lighting up the Night
Awards Dinner & Auction*
5:30 PM
The Standard Club

8

9

10

11

12

13

14



15 *Be a light for Chicagoans
facing poverty. Give today.*

16

17

18 *RAMADAN BEGINS*

19

20

21 *FATHER'S DAY*

22

23

24

25

26

27

28

29

30

OUTREACH AND HEALTH MINISTRY



The goal of the Outreach and Health Ministry Program is to connect people in need to a medical home. In FY14, 190 patients were referred to a health clinic that could serve as their medical home. The Outreach and Health Ministry Program provided 60,963 health outreach contacts to 4,610 youth and adults. The Night Ministry's Health Outreach Nurses conducted 1,226 basic health assessments. 728 homeless or precariously housed youth and adults were tested for HIV. All of those who tested positive were referred to care and upon follow-up, 100% followed through with their first appointment. In FY14, The Night Ministry's Bus served six high-need neighborhoods, four nights per week.

JULY

MON

TUE

WED

THUR

FRI

SAT

SUN

1

2

3

4

INDEPENDENCE DAY

5

6

7

8

9

10

11

12



13

14

15

Be a light for Chicagoans facing poverty. **Give today.**

16

RAMADAN ENDS

17

18

19

20

21

22

23

24

25

26

TISHA B'AV

27

28

29

30

31

ASSOCIATE BOARD



More than 30 active, compassionate people served on The Night Ministry's Associate Board in 2014. They spent 1,313 hours of their time volunteering at The Night Ministry's programs, representing The Night Ministry at events and hosting fundraising events to benefit vulnerable youth and adults in Chicago. In FY14, the Associate Board donated \$10,000 to support The Night Ministry's programs and educated hundreds of people about the importance of The Night Ministry's safety net of social services.

AUGUST

MON

TUE

WED

THUR

FRI

SAT

SUN

1

2

3

4

5

6

7

8

9



Be a light for Chicagoans facing poverty. Give today.

10

11

12

13

14

15

16

17

18

19

20

21

22

23

24 / 31

25

26

27

28

29

30

HIV TESTING & PREVENTION



The Night Ministry's innovative, mobile approach to HIV testing and prevention is working. HIV testers go where high-risk adults and adolescents congregate. In FY14, The Night Ministry tested 728 homeless or precariously housed youth and adults for HIV. 9 individuals received a positive result. All of those who tested positive were referred to care and upon follow-up, 100% followed through with their first appointment. The HIV Testing Program branched out to several testing sites through community partnerships with Breaking Bread and Chicago Help Initiative in FY14. Mobile outreach is a low-threshold way to reach those who need it most. The Night Ministry's HIV testing is made possible, in part, by a team of walkers and runners who fundraise on our behalf during AIDS Run & Walk. We hope you will consider joining our team this year!

SEPTEMBER

MON

TUE

WED

THUR

FRI

SAT

SUN

1

2

3

4

5

6

7
LABOR DAY

8

9

10

11
*NATIONAL DAY OF
SERVICE &
REMEMBRANCE*

12

13



14
*ROSH HASHANA
BEGINS SUNDOWN*

15
*Be a light for Chicagoans
facing poverty. Give today.*

16

17

18

19

20

21

22

23
YOM KIPPUR

24

25

26

27

28
SUKKOT BEGINS

29

30

INTERIM PROGRAM



The Interim Program at Open Door Shelter - West Town provided up to four months of safe, supportive housing to 144 young people ages 14-20 in FY14. During this year, the Interim Program saw an influx of youth coming to the program already employed. This presented the opportunity for Case Managers to focus more on job retention rather than job placement. In fact, 40% of youth with a source of income contributed 60% of their income to a savings account! Youth in the Interim Program participate in life skills classes throughout the week. This photo features a life skills cooking class hosted by Chicago Cares!

OCTOBER

MON

TUE

WED

THUR

FRI

SAT

SUN

1

2

3

4 SUKKOT ENDS

5

6 SIMCHAT TORAH

7

8

9

10

11



12 COLUMBUS DAY

13

14

15 Be a light for Chicagoans facing poverty. Give today.

16

17

18

19

20

21

22

23

24

25

26

27

28

29

30

31 HALLOWEEN

THE CRIB



In FY14, The Crib remained a beacon of light on a dark street for many youth who have been exposed to numerous hardships in their former homes and on the streets. The Crib is an emergency overnight youth shelter for young people ages 18-24. In FY14, 257 young people found a total of 7,488 nights of safe, supportive housing at The Crib. The Crib also provided an opportunity for all youth to shower, do laundry and eat a warm meal. In fact, The Crib served 14,686 meals to youth in FY14!

NOVEMBER

MON

TUE

WED

THUR

FRI

SAT

SUN

1

2

3 *ELECTION DAY*

4

5

6

7

8

9


10

11 *VETERANS DAY*

12

13

14

15 
Be a light for Chicagoans facing poverty. Give today.

16

17

18

19

20

21

22

23 / 30

24

25

26 *THANKSGIVING*

27

28

29

YOUTH OUTREACH TEAM



The Youth Outreach Team offers street outreach and support services to youth who are homeless or precariously-housed in the Lakeview neighborhood. Youth Outreach Professionals frequent areas where homeless youth dwell, and a mobile outreach van makes stops in Lakeview on Tuesday and Thursday nights. Staff and volunteers provide food, survival and hygiene supplies, street counseling, referrals, HIV testing, and health education. The Youth Outreach Team additionally offers fun and engaging activities for youth, including arts expression workshops, games, and safe recreation. In FY14, volunteers served 23,000 meals to street-based youth at Youth Outreach.

DECEMBER

MON

TUE

WED

THUR

FRI

SAT

SUN

1 *GIVING TUESDAY /
WORLD AIDS DAY*

2

3

4

5

6

7 *HANUKKAH BEGINS*

8

9

10

11

12

13



14 *HANUKKAH ENDS*

15 *Be a light for Chicagoans
facing poverty. **Give today.***

16

17

18

19

20

21

22

23

24 *CHRISTMAS EVE*

25 *CHRISTMAS*

26

27

28

29

30

31 *NEW YEAR'S EVE*

ROSA FEELS HUMAN CONNECTION



“The Crib is a safe place to get out of the cold. Here, we are treated like people. It gives me something to look forward to at the end of the day and reminds me that I am human and that someone cares.”

JANUARY

MON

TUE

WED

THUR

FRI

SAT

SUN

1
NEW YEAR'S DAY

2

3

4

5

6
EPIPHANY

7

8

9

10



15
Be a light for Chicagoans facing poverty. Give today.

16

17

11

12

13

14

18

19
MARTIN LUTHER KING JR. DAY

20

21

22

23

24

25

26

27

28

29

30

31

CONTRIBUTIONS

The Night Ministry would like to acknowledge all individuals, foundations, corporations, congregations, Associate Board (AB) Members, and especially Board Members who tirelessly advocate in the community and secure gifts on our behalf. Please note that the below list includes only those gifts at the \$250 level or higher made personally by a specific individual between July 1, 2013 and June 30, 2014.

CORPORATIONS, FOUNDATIONS AND GOVERNMENT

Luminaries \$25,000+

Anonymous (3)
Blue Cross & Blue Shield of Illinois
Cartif Fund/Sandra Vitantonio & Tilden Cummings, Jr.
Chicago Dept. of Family & Support Services
Chicago Dept. of Public Health
ComEd
Crown Family Philanthropies
Edward A. & Evelyn M. Dik Family Foundation
Helen Brach Foundation
Henry Van Gelder Fund/The Chicago Community Trust
HSBC Bank
Illinois Dept. of Human Services
Joseph & Bessie Feinberg Foundation
Julius Frankel Foundation
Lloyd A. Fry Foundation
Michael Reese Health Trust
North Shore Visiting Nurse Fund/The Chicago Community Trust
Northern Trust
Northwestern University
Polk Bros. Foundation
The A. Montgomery Ward Foundation, Bank of America, N. A. Trustee
The Dancing Skies Foundation

The Grainger Foundation
The John R. Houlby Foundation
U.S. Dept. of Health & Human Services
U.S. Dept. of Housing & Urban Development
VNA Foundation

Constellations \$10,000-\$24,999

Anonymous (2)
Adams Street Partners, LLC
AIDS Foundation of Chicago
Altria Companies Employee Community Fund
BMO Harris Bank
Chicago Foundation for Women
Cubs Care, a McCormick Foundation Fund
Dr. Scholl Foundation
Edmond & Alice Opler Foundation
Franklin Square Foundation
Gil & Marlene Bowen Christian Outreach Fund
ICAP North America, Inc.
J. E. Fehsenfeld Family Foundation
JPMorgan Chase
Mr. & Mrs. Michael Keiser Donor Advised Fund of the Chicago Community Foundation
Peoples Gas
PERL Mortgage, Inc.
Pritzker Foundation
Ravenswood Health Care Foundation
The Andrew and Alice Fischer Charitable Trust
The Blowitz-Ridgeway Foundation

The Colonel Stanley R. McNeil Foundation
The Elizabeth Morse Charitable Trust
The Field Foundation of Illinois
The Negaunee Foundation
The Siragusa Foundation
Wells Fargo

City Lights \$5,000-\$9,999

Alfredo & Ada Capitanini Foundation
Benjamin B. Green-Field Foundation
Carl R. Hendrickson Family Foundation
Charles & M. R. Shapiro Foundation
Charter One Foundation
Chicago White Sox Community Fund, a McCormick Foundation Fund
CITGO Petroleum Corporation
CVS Caremark Charitable Trust
Daniel F. and Ada L. Rice Foundation
David & Jean Stremmel Fund/Donor Advised Fund at The Chicago Community Trust
Fifth Third Bank Chicago
Fred J. Brunner Foundation
Gould & Ratner LLP
Harry S. Black & Allon Fuller Fund
Irving Harris Foundation
Jones Day
Macy's
McGraw Foundation
Murray & Diana Johnson Charitable Fund
O'Brien Family Foundation
Patrick and Anna M. Cudahy Fund

Proud to Run
Quarles & Brady LLP
Richard E. Lyke Charitable Lead Trust
Shawn M. Donnelley & Christopher M. Kelly
The Baxter International Foundation
The Bednarz/McMahon Family Fund
The Chatlos Foundation, Inc.
The Fama Family Charitable Fund
The North Shore Exchange
The Pierce Family Charitable Foundation
The Thomas Family Foundation
Walgreens
Winston & Strawn LLP

Guiding Lights \$1,000-\$4,999

American Society of Travel Agents
AON Foundation
Arch W. Shaw Foundation
Baird & Warner Good Will Fund/The Chicago Community Trust
Blum-Kovler Foundation
Brewer Family Foundation
Bross Family Foundation
C. Louis Meyer Family Foundation
Charles River Associates
DaVita Dialysis
Deluxe Corporation Foundation
Edelman Public Relations Worldwide
Edward & Rose Donnell Foundation
Elick and Charlotte Lindon Foundation
Emergency Food and Shelter National Board Program
Essent Guaranty, Inc.

Francis Beidler Foundation
Frawley Family Foundation
Fred B. Jones Special Fund/The Chicago Community Trust
Health and Medicine Policy Research Group
Herman & Katherine Peters Foundation, Corp.
Imperial Windy City Court of the Prairie State Empire, Inc. NFP
Ira Kaufman Family Foundation/Stephen & Lori Kaufman
Jacob Best Foundation
James Kramer Family Charitable Fund
Jocarno Fund
Kirsten & Brian Barkley/Hansen-Furnas Foundation, Inc.
Kohl's
Lake Forest Bank & Trust Company
Lakeshore Foundation, Inc.
Lakeshore Title Agency
Laurus Strategies
Legalpeople, LLC
Marsh & McLennan Companies
MAXIMUS Foundation
McCortney Foundation
Milt's BBQ For The Perplexed
Netrix, LLC
Paul W. Franke Family Foundation
PFLAG - Deerfield
Rachel B. Williams Foundation
RBC Foundation
S. Downey Fund/Donor Advised Fund at The Chicago Community Foundation
Michael Sabal/S Mechanical Inc.
Sargent Family Foundation
Sauganash Woman's Club Foundation

Stokes Family Charitable Fund
Sulzer Family Foundation
The Benevity Community Impact Fund
The Bishop Family Fund - a Donor Advised Fund at the Renaissance Charitable Foundation. Inc.
The Boeing Company
The Children's School
The Dewan Foundation
The Donnelley Foundation
The Joseph and Catherine Johnson Family Foundation
The Maurice Foundation
The Sondheimer Family Charitable Foundation
The Speiser Family Foundation
Tracer Bullet Rock
TTX Company
Walmart
Washingtonian Health Care Foundation
Whole Foods Market, Sauganash

Streetlights \$500-\$999

Bodhi Spiritual Center
Cappex.com, LLC
Devon Bank
Galoney-Strubbe Charitable Foundation
John Marshall Family Foundation
Kardos Family Foundation
Ladies of the Chicago Northshore Elks Lorelei Foundation, Inc.
MB Financial Bank, N.A.
Non Profit Risk Services, Inc.
Ohio Dominican University
Philip M. Friedmann Family Charitable Trust
Resource Partners Chicago, Inc.
Resurrection High School
Richard C. and Margaret V. Romano Charitable Trust

Rough Magic
Roundy's Foundation, Inc.
Sandy Schmidt/Schmidt Financial Group, Inc.
Shubeck Monsour Foundation
Strategic Wealth Partners, LLC
The Lions Club of Long Grove, Inc.
The Sharing Of Blessings Foundation
Tom Oles/1st Executive Appraisal Services, LLC
Westchester Community Foundation
William and Wilma Dooley Foundation
William Harris Investors, Inc.

Lanterns \$250-\$499

CBOE
Cooney & Conway
Division Chiropractic & Acupuncture
Draper and Kramer, Inc.
James B. McPherson Elementary School, Chicago
Kies Consulting, LLC
MacFund
Newark
Perkins Coie
Personal Office Management, Inc.
PFLAG of Woodstock
Schultz & Williams
The Loewenberg Charitable Foundation
Xylem Inc.

MATCHING GIFTS

Abbott Laboratories
ACE Charitable Foundation
Allstate
Altria Companies
Ameriprise Financial
BMO Harris Bank
Bristol-Myers Squibb Foundation

CCH, a Wolters Kluwer Business
Chicago Mercantile Exchange Group
Chicago Tribune Foundation
CNA Foundation
Denbury Onshore LLC
Discover Financial Services
FactSet Research Systems Inc.
Follett Corporation
Gap Foundation
Goldman, Sachs & Co.
Google
W. W. Grainger
Henry Crown & Company
Hospira
Houghton Mifflin
Illinois Tool Works Foundation
Irving Harris Foundation
JPMorgan Chase Foundation
Kraft Foods
Macy's/Bloomingdale's
Macy's Foundation
Microsoft Corporation
Midland National Life Insurance Co.
Motorola Solutions Foundation
Northern Trust
Omron Foundation, Inc.
PCS Administration (USA), Inc.
Peoples Gas Light and Coke Co.
Pepsico Foundation
Pfizer Foundation
Salesforce.com Foundation
The Bank of America Foundation
The Field Foundation of Illinois
The John D. & Catherine T. MacArthur Foundation
The Joyce Foundation
UBS
William Harris Investors, Inc.

CONGREGATIONS AND DENOMINATIONS

Constellations \$10,000-\$24,999

Kenilworth Union Church

City Lights \$5,000-\$9,999

Countryside Church Unitarian Universalist, Palatine
First Presbyterian Church of Arlington Heights
First Presbyterian Church of Lake Forest/The Chicago Community Trust
Union Church of Hinsdale
Woman's Society of Winnetka Congregational Church

Guiding Lights \$1,000-\$4,999

Anshe Emet Synagogue, Chicago
Community Presbyterian Church, Clarendon Hills
Ebenezer Lutheran Church, Chicago
Edgebrook Community Church, Chicago
Edgebrook Lutheran Church, Chicago
First Congregational Church of La Grange
First Congregational Church of Western Springs
First Congregational Church of Wilmette/Church Fund at The Chicago Community Trust
First Presbyterian Church of La Grange

First Presbyterian Church of Wilmette
Glencoe Union Church
Glenview Community Church/The Chicago Community Trust
Grace Lutheran Church & School, River Forest
Highland Park Presbyterian Church
Holy Trinity Lutheran Church, Chicago
Illinois Conference of the United Church of Christ
Lake View Lutheran Church, Chicago
Northminster Presbyterian Church, Evanston
Our Saviour's Lutheran Church, Arlington Heights
Resurrection Lutheran Church, Chicago
Southminster Presbyterian Church, Arlington Heights
St. Gregory's Episcopal Church, Deerfield
St. John's Evangelical Lutheran Church, Wilmette
St. Pauls United Church of Christ, Chicago
The Church of the Holy Spirit, Lake Forest
The Episcopal Church of St. James the Less, Northfield
Wellington Avenue United Church of Christ, Chicago
Woman's Society - First Congregational Church of Western Springs
Women of the Evangelical Lutheran Church of America, Chicago
Women's Association of Glenview Community Church
Yorkfield Presbyterian Church, Elmhurst

Street Lights \$500-\$999

AGLO Chicago
Chicago Coalition of Welcoming Churches
Church of the Ascension, Chicago
Congregational United Church of Christ of Arlington Heights
Edgebrook Woman's Club, Chicago
Episcopal Church Women of the Diocese of Chicago
First Congregational Church of Glen Ellyn
First Congregational Church UCC, Des Plaines
First United Methodist Church, Downers Grove
First United Methodist Church, Evanston
Friendly Circle of St. John UCC, Arlington Heights
Gary United Methodist Church, Wheaton
Justice and Witness Ministries, Cleveland, OH
Morton Grove Community Church
Northfield Community Church
Presbyterian Women - Park Ridge Presbyterian Church
Peace Memorial Church UCC, Palos Park
Pilgrim Lutheran Church and School, Chicago
Plymouth Congregational UCC, Burlington, WI
Presbyterian Women of the Presbytery of Chicago
Ravenswood United Church of Christ
Redeemer Lutheran Church, Hinsdale
St. Luke Presbyterian Church, Downers Grove
St. Mark's Episcopal Church, Barrington Hills

The Deaconess Community, Chicago
The Social Concerns Committee of St. Paul Community Church, Homewood
United Church of Hyde Park, Chicago
Unity in Chicago

Lanterns \$250-\$499

Bridgeway Sunday Worship Service, Bensenville
Calvary United Protestant Church, Park Forest
Christ Church United Church of Christ, Des Plaines
Church of the Three Crosses, Chicago
Faith United Protestant Church, Park Forest
Friendship Presbyterian Church, Chicago
Good Shepherd Presbyterian Church, Chicago
Grace Lutheran Church, Northbrook
Living Water Ministries, New Era, MI
Mary, Seat of Wisdom Parish, Park Ridge
North Shore Baptist Church, Chicago
Park Ridge Community Church
Presbyterian Church of Western Springs
Presbyterian Women - First Presbyterian Church of Deerfield
Saint Isaac Jogues Parish, Niles
Sauganash Community Church, Chicago
Sisters of Christian Charity, Wilmette
St. John the Evangelist Episcopal Church, Flossmoor
United Methodist Women of Barrington United Methodist Church
Women's Fellowship at Congregational UCC of St. Charles

INDIVIDUALS

Luminaries \$25,000+

Anonymous (2)
Linda & Bill Cheeseman
Mary & Paul Finnegan
Ellen & Paul Gignilliat
Anne & Bill Goldstein
Leonard C. Goodman
Alicia & Peter Pond

Constellations \$10,000-\$24,999

Anonymous
David & Nicole Berger
Maureen & Robert Carson
C. J. Getz & Laura Szynal
Grace & Ike P. Hong
Janice L. Honigberg
Robert Kohl & Clark Pellett
Ann Lurie
Richard & Kathleen Michel
Jenny & Nick Semaca
The Estate of Carol B. Michael
Mr. & Mrs. William R. Tobey, Jr.

City Lights \$5,000-\$9,999

Anonymous (5)
Barbara & John Baran
Joseph E. Byrd & Helen C. Slade
Combined Federal Campaign
Marti Corcoran
Mary B. Galvin
Rebecca Gilman & Charles Harmon
Mr. & Mrs. Richard Jay
Melanee J. Jech
Judelson Family Foundation
Sharon & Scott Markman

Laurie B. McCollum & Carl W. Warschausky
Mark & Susan Neaman
Laurel A. Neu
Lucy Reinheimer
Ellen Romberg
Mr. & Mrs. John W. Rowe
Gerald & Barbara Schultz
Mark P. Smith
Matthew D. Smith
Leonard G. Strauch
Sven & Julie Sykes
Sean Taylor & Sian Sutcliffe
Dennis W. Thorn
Andrew Thorrens & Don Mizerk
Lesley Weir & Scott R. Swan
Eddie & Pamela Williams

Guiding Lights \$1,000-\$4,999

Anonymous (18)
Gordon & Paula Addington
Gina & Mark Affolter
Karen & Kimball Anderson
Diane Austin
Lorraine & Randy Barba
Beth & Chris Barer
Randy Barrengos & Geoffrey Ayoub
Robert Beck
Mr. & Mrs. Everett J. Bell
Lisa Bertagnoli & William Schober
Andrea Billhardt
Mr. & Mrs. Harrington Bischof
Matthew D. Black
Sue & Jim Blomberg
John P. Blosser
Boehrer Family
Philip J. Bornhofen
Laura & Michael Boutross
Carolyn & James Brett
Matthew Brett & Emily Monnelly
Judson & Gabrielle Brooks
Noah Brown

Catherine Bullard
Maree G. Bullock
Pamella & Al Capitanini
Charles P. Carey
Roger & Ginny Carlson
Frank B. Chauner
Deborah Claflin & Eric Marshall
Jim & Jo Cochrane
John Cole
Ronald & Carol Cole
Cecilia Conrad
Brian & Margaret Cook
Rita T. Cooper
Beth A. Coughlin & David D. Wang
Adrienne Cozette
Kristi Dahm & Brian Herman
Tom & Julie Danilek
Raju Viswanadha Datla
Nancy Dehmlow
Martin F. Devine
Anne-Marie Douglas
Joe Doyle
Sally Metzler Dunea & George Dunea
Thomas J. Ehlen
Melanie D. Ehrhart
Janine Landow-Esser & Jeff Esser
Brian & Kathy Fergemann
Linda & Carl Fisher
Fred & Sarah Flosi
John & Nancy Furr
Michael T. Galvin
Kim Garber
Erin Gardiner
Rebecca A. Garrett
Amy George
William J. Gibbons
Lauren & Andrew Goldman
Kate & Dick Gottfred
Dr. Andrew Griffin & Ms. Moira Collins
John & Dana Hagenah
Paul W. Hamann
Rita M. Hamann
John & Peg Haskins
Guy & Mary Ann Haupin
Jeanne & Joshua Heffron

Brian & Eirene Heidelberger
Sarai Hoffman & Stephen T. Pratt
Carol A. Hogan
Mr. & Mrs. James S. Hogan
Judith M. Honesty
Karen T. Horan
Harold Horwich
Beth & Darren Hunter
Kevin R. Hyland
Liz & Bruce Johnson
Sharon M. Johnson
Cynthia A. Johnston &
William M. Kiolbassa
Lindsay Jones
Laura Jordahl
Irvin L. Kaage III
Elena & Perry Kamel
Frederick M. Kaplan
Rachel Kaplan & Robert Riesman
Monty Kehl & Craig Wilbanks
Kim & Rich Kempf/Arrow Appraisal
Group, LLC
Bonnie Kepplinger
Marion & Chuck Kierscht
James & Ozana King
Judy & Bill Knight
Keith Kreb
William Kristofek
Ruth Krugly & Darryl R. Davidson
Bill & Blair Lawlor
Amy & Michael Leeds
Beth D. Lewis
Mike Linder
Brian & Kim Love
Mary & Chris Lynn
Jim & Kay Mabie
Carol & Ben Mackoff
Ted & Almeda Maynard
Leslie McCall
John F. McCartney
Bozena & John McLees
Linda & Robert Mendelson
JoAnn Metternich
Patricia & Max Mielecki
Mark P. Miller

Barb & Larry Mollo
Rich & Jenny Moore
Sandra L. Mueller
Lee P. Murphy
Annie & Scott Mygind
Joseph Negri
Leif & Valerie Nielsen
Sarah & Tom Nolan
Frances M. O'Hern
Roberta Olshansky
William & Cathleen Osborn
John Oskin
Barbara & Robert P. Perkaus, Jr.
Jane Sisco Perkins & Jim Perkins
Kurt T. Peters & Elizabeth
Hopp-Peters
Denise M. Peterson
Pam Piane & Calvin Bower
John & Sheila Pigott
Karen & Dick Pigott
Joseph Podwika
Joel & Trisha Pomerenk
Smith T. Powell III & Eva Janzen
Powell
Elizabeth Press/Press Adelman
Foundation
Dana Preston
Mary Ann Pusateri
Janet Reali & Mitchell Cobey
Mary Hutchings Reed
Anthony & Kim Richards
Norman L. Riley
Pam & Paul Rolfes
Jill & Allan Ruter
Dr. Ralph Ryan
Lora Sanberg
Leanne Sardiga
Kevin Scanlon
Neal Scherberg & Diane Lukoff
Fred Schmitz
Chandra Sekhar
Michele A. Semisch
Margaret Shaklee & Hillis Howie, Jr.
Sharbel Shamoan
Thomas & Nancy Sharp

Hope & Jeffrey Sheffield
Nancy & Stratford Shields
Scott Simmons
Debbie & Bernie Simon
Elizabeth M. Simpkin & David L.
Wetherbee
Michael T. Smith
Deborah & John Sobel
Elisa K. Spain
Kathy & Brian Spear
Ted & Audrey Spiegel
Matthew Staman
Randy Stearns & Stacey Bashara
Stearns
Sylvia V. Stec
Mary Stowell
Suzy & Ron Strauss
Lee & Joan Strouse
Colleen Sullivan & Max Nutkowitz
Margaret Sullivan & Chuck Elliott
Cindy Surowiak
Robert & Jill Tanz
Tod Tappert & John Gallagher
Helen & Dick Thomas
Thomas & Jeannie Tisbo
Liz & Jamie Tyrrell
George & Karen Tzanetopoulos
Henry & Janet Underwood
Nancy Vincent
KW & LJ Wachowski
William R. Wallin
Dr. Theodore C. Walters & Michael A.
Walters
Pamela & David Waud
Elliot S. Weisenberg
Stephanie Nora White & Raymond J.
White, Jr.
Kathy & Jon Wilson
Michael & Mary Woolever
Shelley Ziacik
Dr. Lawrence & Judith Zimmerman

Street Lights \$500-\$999

Anonymous (24)
Geoffrey A. Anderson/The Ruth and
Roger Anderson Family Foundation
Gregg & Kristin Augustine
The Augustines
Janice G. Bail
Melanie & John Balzer
Michael Baran
Carmelo Barbaro
Jack & Beth Barnett
Richard Bell
Steven Bialer
Nancy Pond Boostrom
Beth & Scott Brady
Larry A. Braskamp
Decima & Adam Brausa
Dorothy I. Bultema
Charles A. Burbridge & Deborah
Gillespie
Dana Bursch
Eoin Callery
Kathy Carroll & Dan Schonwald
David & Suzanne Causton
John & Charleen Cepek
Kathleen Cheevers
Susan Hollis Clayson
Kristie Clemons & James Markich
Erin & Michael Cole

Connolly Charitable Fund
Merle R. Cooper
Marc Cosentino
Richard Crandall
Amy & Samuel Crider
Mary A. DiPietro
Jeremy A. Doherty
Scott Dolan
Patricia & Michael Dow
Theresa & Basil Doyle
Rose Marie Dubiel
Jill & Jim Due
John Dugenske
Stephen Durchslag
Craig Ellinger
Jean M. Engelkemeir, MD
Jeffrey W. Engle
John & Catherine Estey
Marion Evans
Terry & Sam Evans
Randy Fearnow
Karis Findlan
Megan Flood
Ms. Anne Flosi
James & Karin Flynn
Norma J. Flynn
Mr. & Mrs. Daniel Foley
Lester & Angie Frankenthal
Gary & Linda Gephart
John Glasspool
Michael F. Golm
Goodban Family

IN-KIND DONATIONS

More than 500 individuals, corporations, clubs, congregations and families donated in-kind gifts to The Night Ministry in FY14. These included blankets, hygiene items, socks, diapers, gloves, and more, and the value exceeded \$225,000. We thank all who donated—no matter how large or small the gift—it made a difference.

Jill R. Gordon
Stephen Graessle
Alan & Carol Greene
James P. Grusecki
Michael Gubin
Diane Guganig
Lori & Mark Hamann
Patricia Hamann
Timothy Harris
Nancy & John Hartung
Kimberly Haupin
Ellen Havdala
Christopher Heimarck
David & Meg Heinz
Dorrit E. Herreid
Edie & Mark Hickman
Thomas M. Hofstetter
Susan Hudson
Pamela K. Hull
Sheila & Robert Hulseman
John & Lisa Iberle
Catherine & Eric Jacobson
Anthony & Joan Janowski
Norman Jeddelloh
Neil J. Jesuele
Elena M. Jimenez
Mr. & Mrs. Matthew Johnson
Michael & Marion Johnson
Mr. & Mrs. Gregory Kaczmarek
Paula R. Kahn
Niranjan Karnik
Silas Keehn
Colleen Kenedy
Julie & Patrick Kennelly
Jung E. Kim
Mr. and Mrs. John Kinahan
Lore B. Kirchheimer
Deborah & Robert Klipp
Craig Kouri
Susan & Andrew Kramer
Jacqueline Krump
Henry Kugeler
Peter Landon & Karen Patinkin
Carolyn A. Landwehr
Lucille & Jack Lasday

Noreen & Robert Lassandrello
Alfred Lee
Carolyn & Jesse Lee
Hyong Lee
Mrs. Frederick R. Lent
Jim & Susanne Lenz
John Leonard
Ruth M. Levine
Susan Grob Lichtenfeld
Jane D. Lippow
Janice Liten & Mike Schnur
Kilby & William Macfadden
Madelyn MacMahon
Kathleen & Joseph C. Madden
John Malusa
Elizabeth Martin
Patricia May
Mary & James McBride
Kay W. McCurdy
Paul & Lisa McGrady
Bruce & Jane McLagan
Michael McMillan
Henry Messerschmidt
Marvin Metge
Robert Mihlfried
Marc Miller & Chris Horsman
Joanne Mineo
William & Patricia Minihan
David & Laura Mohr
John Mohr
John H. Moorhead
Dianne C. Morr
Pat & Jim Nack
Michael P. Neary
Joanne Nemerovski & Marc Brown
Eric Nixon
Stephen & Deborah O'Connor
Holly Ost
Martha & Jeffrey Pattee
Linda & Stephen Patton
Margaret E. Paulson
John & Agnes Pawelski
Armando Pedroso
Roxelyn M. Pepper
Hyde & Ann Perce

Ken & Stephani Perlmutter
E. Scott Peterson & Judith M. Desenis
Richard Peterson & Rev. Wayne
Bradley
Bernadine & Edward Pillar
Thomas W. Planek
Anne F. Pollock
John Poorman
Diana & Bruce Rauner
Thomas F. Reagan
Corrine Reichert
Scott & Mary Reynolds
Mr. & Mrs. David W. Riddell
Robin Lee Roberts
Rosborough Partners, Inc.
Fred Rosen
Ron & Shelly Rothstein
Rebecca & David Russo
Bonnie & Thomas Sampson
Leatrice & Steve Sandler
Jennifer & Stephen Schaefer
Lynne & Ralph Schatz
Mary T. Schmich
Wesley E. Scroggins
Francesco Sguanci
Catherine Shaw
Timothy C. Sherck
Suzanne T. Smart
Michael & Antje Spade
Darolyn & Robert Spannuth
Donald Spetter
Moira & Mitchell Staggs
Eric Staudt
Jeanne Schwenk Steen
Dana & William Stein
Eric Strickland
Timothy J. Sullivan
Michael B. Susman
Elspeth Taylor
David J. Thurber
John & Bernice Tulloch
Kenneth & Barbara Turner
Karen Uselmann
Vedavathi Vandanapu
Barbara L. Vegter

Peggy J. Vierk
Diane & Kurt Vragel
Julie Walton
Loretta & Monroe Walton
Myrtle S. Wangerin
Caroline S. Watkins
Jennifer Weaver
Bernadine T. Weber
Valerie & Robert Weiss
Mr. & Mrs. George E. Wendt, Jr.
Max West
Harold W. Whitacre, Jr.
Patricia & William Williams
Dick & Liz Wilmes
Consuelo Bedoya-Witt & Thomas R.
Witt
Howard & Iris Wittenberg
A. Virginia Witucke
Jane A. Wolfe
Susan & Stephen Wolfe
Maggie & Robert Zielinski
Andrew J. Zych

Lantern \$250-\$499

Anonymous (35)
Dora & John Aalbregtse
Jessica Agin
Abhinandan Agrawal
Timothy J. Alford
Elizabeth Allen
Kristin Anderson
Richard E. Anderson
Joann Angarola
Katrina & Jonathan Arthur
Lucy & Peter Ascoli
Glenn Augustine
John J. Baffa
Morris Barazani
Dawn Barcus
Craig Beardsley
Cora W. Beckom
Tom & Siria Behrens

Perla M. Benrubi
Kay Berkson & Sidney Hollander
Mario Bernardi & Mike Ochoa
Diane C. Betten
Lieselotte N. Betterman
D. Steven Bishop
Zachary Bleicher
Kenneth L. & Margaret S. Block
John & Donna Bloniarz
Dan & Louise Bockelmann
William & Beverly Bolsen
Maarten Bosland
Stephen S. Bowen
Melissa Bowie
John Bradley
Berton G. Braun
Giovanna Breu
Patricia & Otis Bridges
Erwin F. Brinkmann
Beth A. Brown
Daniel T. Brown
David & Tiffany Bruskin
Thomas Brusstar
Rita Buczynska
Mr. & Mrs. Dean L. Buntrock
Vernice Burr
Joanne & Gary Busch
Elizabeth & Jeritt Bushaw
Patricia Butkus
Frank Butler
Timothy Buzard
Amy & Gabe Cahill
James R. Callero
Donald A. Campbell
Velaine Carnall
Serena A. Carroll
Neil Carson
Ray Bentley Carter
Suckhee Cha
Aaron Chapin
Karen K. Cichon
Kim Olsen-Clark & Ian Clark
Tom & Jo Clark
Maurice Classen
John & Diane Conway

Robert & Ann Corvino
Bruce Cox
Catherine Crino
Julie Crothers
Lisa Daghler
Julie & John Danaher
Lucinda Daniels
Michelle Dassinger
Mary Davenport
Arielle Deane
Aaron DeCamp
Karen K. Del Prete
Patty L. Delony
Sarah Demet
Gordon R. Denboer
Thomas J. Digenan
Corrine & Kent Donewald
Beatrice Duffy
Sarah Dugan
Janet C. Eckhardt
Traci & Scott Eisner
James & Dianne Erickson
Jane & Jim Esser
Janice K. Finney, Derek Issak & Naomi
Lakeisha Finney
Drs. Christine M. & Peter R. Fletcher
Stuart & Adrienne Foler
Andrea & Benjamin Folsom
Daniel & Roxane Friedman
Valery Gallagher
Melissa Galli
Pearlie Gardner
Renee L. Gelman
Sarah E. Generes
Chris & Connie Gillock
Brian E. Goebel
Alan & Michelle Goldberg
Susan & Bruce Gottschall
Richard & Mary Gray
Kenneth Green & Holly Wathan
Thomas A. Grell
Mary & Thomas Grittani
James D. Groszek
Laurie Gushe
Jean & Donald Haider

Tim Hanley
Brad & Lucy Hannah
John & Julie Hansen
Mary Ann Harrington
Eric Hassel
Kim Haynie
Deena Heller
Carrie Hewitt & Adam Shild
Robert Heywood
Dorothy J. Hoffner
Van Holkeboer & Linda K. Bachelder
James & Wanda Hollensteiner
Debra & Earle Holmes
Jane Trueheart Huels
Warren Hurlburt
Michael S. Hyman
Mary Ann Imbra
Peter & Tamara Jaffe-Notier
Rick & Mary Jobski
David H. Joel & Susan Holtzman
Barbara & Martin Johanson
Arlene Johnson
Marcia A. Johnson
Leslie Jones
Maria Kallmeyer
Emile Karafiol & Virginia Robinson
William Karnoscak
Marilyn Karsh
Miriam J. Kelm
Kathleen L. Kerns
Leo Kim
Sarah T. Klinzing-Le
Cathy Koehler
Amor Kohli
Sandra & Brian Kraimer
John & Beth Kregor
Elizabeth A. Kurman
Martin Laskowski
William J. Lauck
William J. Lechnick
Joyce & Ted Lenart
Magda Levy
Mary Linberger & David Allen
Marcia & Joe Liss
William C. Lordan

Maureen Loughnane
Carlene Lutz
Susan Lutz
Ruth Lynch
David Mackler
Paul Marengo & Joan Simmons
Andrew & Kelly Masse
Gilaad Matar
Susanne Mathewson
Hugh G. McBreen
Margaret McCamant
Mary Kay McCaw
Brian McCormick
Elizabeth M. McDermott
Jane E. McDonald
Thomas & Elizabeth Meehan
Sally & Phil Meno
Carole Mills
Catherine & Leo Miserendino
Dennis Moffitt
Lawrence Mollo
Diane & James Moore
Ed & Marcia Moore
Gene & Richard Morey
Roselyn & Barry Morgen
John & Naomi Morris
Jim Motzer
Mary Jo Mulcahy
Monica Murtha
Stephen D. Nechtow
Jonnie & Barlow Nelson
Marjorie K. Newpher
Catherine & Michael Nichols
Mrs. LaVerne A. Nichols
Richard Nordstrom
Sarah R. Packard
Michael Palmer
Doris & Stephan Palmie
John A. Pasurka
Helen Pavia
Frances Pellouchoud
Christopher Pena
Martin Perry & Barbara Williams
Ramon Perry
David & Claudette Peterson

Dina Petrakis
Bob Pickrell
Carol & Hadley Pihl
Antoinette Plazibat
Gill Poole
Helen C. Poot & Michael Mattson
Mr. & Mrs. Avner Porat
Melinda Power
Neil A. Pritz & Kathleen M. Slomski
Janet & Robert Reed
Maureen Reilly
Terrence A. Reilly
Daniel & Gloria Reisner
Robyn R. Richards
Irene M. Rielly
Susan Roach
Daniel Robinson
Paul & Sharlene Roge
Andy Ross
Bernadette Ross
Linda & John Rossi
Valerie L. Rudd
Eugene W. Rzym
Mary Beth & Dominic Saraceno
Howard A. Sass
Mary & John Satter
Ruth & Mark Schlossberg
Karen & Frank Schneider
Beth & Richard Schowalter
Charles A. Schrock
Maryellen & Tom Scott
Craig M. Seidel
Colleen & Dave Seidman
Roshan Shankar
Renetta Shapiro
Michael D. Sharer
Corinne Q. Siegel
Michael S. Siegel
Barbara Sipe
Terry & Connie Smith
Joan M. Soderberg
Faith H. Spencer
Paul & Janice Springborn
Elyse & Frank Stackhouse
Martin & Rebecca Staehlin

Philip Stec
Christopher R. Stein
Sheryl Stout
James Strait & Janina Levy
Sarah & Jim Taich
A. Robert & Barbara Taylor
Louisa Taylor
Thomas Thuerer
Swanette Triem
Jon Trowbridge
Richard E. Trueheart
Nancy & Donald Van Beek, Jr.
Peter Vanoverveld
Darius A. Villalobos
John & Annette Vincent
Kathleen Vito
Lauren Wagner
Susan Wallace
Barbara A. Warren
Sharon M. Weber
Mrs. Frank O. Wetmore II
Vicki L. Weyhrich
Maribeth & John White
Valerie B. Wiley
Christopher Williams
Brian Yocum
Katherine Yoshida
John F. Zissis
Ken Zych

IN HONOR

Sue Ackerman's & Sue's sister's
birthday

Kate Grossman

Gordon Addington

Mike Ban

Judy & Bill Knight

Jonnie & Barlow Nelson

Julie & Remy Rubin

Dennis W. Thorn

Amy & Anthony Volpe

Randy Wagner

Paula & Gordon Addington

Bertha DePriest
Rose Marie Dubiel

Josue Aguilera

Kelly VanBrouwer

Audrey Alberts

Ann & James S. Hogan

Stephanie Aman

Jorge Rodriguez

Ted Asner

Bernadine & Donald M. Krueger

The Augustine Family

Glenn Augustine

Barbara Baran

Diana C. Babilonia

Diane L. Behling

Jennifer A. Block

Eddie Doerk

Employees at Peoples Gas

Kathryn A. Hartman

Mary & Andrew J. Houpt

Sara M. Hurley

Mary Klyasheff

Joyce & Ted Lenart

Charles A. Schrock

Elyse & Frank T. Stackhouse

Mark G. Stapleton

Richard B. Turner

Chrystl L. Wallace

Mary Barrett

Helen M. Barrett

Peter & Carolyn Barrett

Anne & Bill Goldstein

Lucas Bauerlein

Mary Joan Lee

Benjamin & Owen Bechteler

Stephanie Schmitz Bechteler

June Way Beesley

Marvin F. Metge

Tom Behrens

Kay Berkson & Sidney Hollander

Patricia A. Broughton

Barbara & Thomas K. Peterson

Nicole & David Berger

Roz & Barry E. Morgen

Bev & Darien's wedding

Judith McLaughlin Gall

Joel Bevis

Ashley J. Sicinski

Mike Biggs

Cathy Koehler

Cindy & Stephan Blandin

Marie & John H. Myszka

Barbara Bolsen

Nancy Ethiel

Kurt D. Steele

Bobbie & Bob Taylor

Shawna Bowman

James Lifton

Abby Parcell

Rev. Dr. Mark Bradley & Rev. Jake**Bradley**

Helen C. Pavia

Don Breitfelder

Susan M. Leinwohl

Kathleen Cahill

Donna Davis & Jeff Cash

Ginny Campbell

Joey Trachtman

Christopher Cascaron

Sue E. Holbert

Tom & Angie Catania

Swanette Triem

The Chadaranek Family

Andrew & Barry Sidorov

Jean Cleland

David & Candace Cleland

Rabbi Menachem Cohen

Paula Cohen

Tina & Gonzalo Escobar

Beverly "Bev" Compton

Mary Hamester

Anne McCarthy Conidi

Anne & John Conidi

Noel Conroy

Bob Conroy

Nicholas Conway & Amanda Crowley

Easha Anand

Lisa & Christian Bronson

Nathan La Porte & Leah Handel

John H. Moorhead

Zachary Joseph (Austin) Cooper

Diane M. Austin

Fred & Linda Cooperman

Mark Cooperman

Sam Cooperman

Elaine Rest

Karen Corbin

Donna Davis & Jeff Cash

Eugene Cunningham

Charlene L. Holtz

Harrison & Kathy Cunningham

Charlene L. Holtz

Elsie Cushing

Javier Toubes-Vilarino

Lorrie Cuzzo

Rachael & David Weasley

James R. Donnelley

Nina H. Donnelley

Shawn M. Donnelley

Ken Duckmann & James Perez

Anonymous Friend

Karen Andersen

Barbara Bolsen

Richard Bough & David Easterbrook

Greg Carroll

Kristen Drago

Michelle Jackman

Kelly & Michael Johnson

Geraldine Kruse

Jill & David Lehrer

Don Marsh

Paula Mathews

Kristeen McLain

Vanessa L. Miranda

Joan Morgan

Janelle & Tim Peterson

Cherie Starck

Helene Toiv

Jessica Easter

Nancy Wallace

Di Erickson

James & Dianne Erickson

Sam Evan

Marcus Miller & Chris Horsman

David & Mary Evans

Marion M. Evans

Ryan Evans

Marion M. Evans

Zackery Evans

Marion M. Evans

Mr. & Mrs. Luther Everett

Mildred D. Willis

Brian Fergemann

Ann & Gary D. Fergemann

Duane Feurer

Jean Feurer

Kurt Feurer

Jane & Duane Feurer

Amy Feurer Legan

Michelle Flaherty

Marion M. Evans

Sheila Flaherty

Marion M. Evans

Evelyn Friedman

Sidney M. Friedman

Mr. & Mrs. Franklin L. Friedman

Ann & Jim Hogan

Friend who is getting married

Stefanie Jonkman

Andrea Garces & David Wycoco

Joel & Trisha Pomerenk

Lisa Gariota & Collette Clark

Cynthia M. Waters

Anna Gartner

Amy Downey

Andy Gillock

Christopher Gillock

Gloria Dei Lutheran Church Sept. 8 service event

Marilyn M. Thompson

Dr. Robert Goldschmidt

Toby Paull

Anne & Bill Goldstein

Kathy Carroll & Dan Schonwald

Dolores & Al Erlebacher

Barbara & Merrill Greenberger

Bill Goldstein

Anne & Marcel Frenkel

Cathy Koehler

Deb & John Sobel

Goods for Good Charity Event at TCS**Ed System**

Meghan Sbertoli

Jacobi & Christina Habib

Heidi Korhase

Paul W. Hamann

Glenn Augustine

Susan Hollis Clayson

Ellen Hamilton

Gregory Bork, Jr.

The Hanson Family

Frances M. O'Hern

Sarah Hobert

James Harneo

Jonah & Eden Hofeld

Alison Toback-Hofeld & Albert F.

Hofeld III

Nancy Hoffman of Evanston

Betty E. Landis

Claire Holohan

Judith A. Sandler

Charlene Holtz

Barbara Finder

Ike & Grace Hong

Richard A. Sharfstein

Ike Hong

Mr. & Mrs. Mark R. Neaman

Dan Horan

Marion Gladstein

Grandma & Grandpa Hunt

Francesco Sguanci

Howard & Jane Hush

Mabel L. Rice

Susan Igo

Christine Igo

Josh Jacobson

Jody Jacobson

Mr. & Mrs. Keith R. Jans

Ann & Jim Hogan

Beth & Erica Jones

Donna & Roger Jones

Leigh Jones
Lora Sanberg

Dorothy Kane
Mary Kane

Ellen Keating
Jennifer Lynn Stringfellow

Bonnie Kepplinger
Catherine & Dennis A. Gross
Gerri L. Shute

Dawn Kerth
Paul & Ellen Gignilliat

Julie & John Kinnaman
B. J. Anderson

Kevin Kreeger
Lora Sanberg

Karen Krieb
Joseph Krieb

Judy Kucera
Daniel Kucera

Janine Landow-Esser
Ted & Cheryl Banks
James & Emily Borovsky
Richard & Sharon Canter
Jane & Jim Esser
Helene Greenwald
Gail & Ron Kahn
Paul Landow
Debby Lewis
Debbie & Alberto Mizrahi
Joan & Avner Porat
Lynne & Ralph A. Schatz
Michael S. Siegel
Sheri Simon
Alfred & Barbara Winick
Jeanette Garber Zemsky

Georgia Marie Lange
Alexandra Graves

Albert Lawson
Charlotte Whitley & Lee Lohman

Mrs. Lorrie Leahigh
Joe & Lois Reichel

Lesley & Paula
Sue & Scott W. Anderson

Eric Lifton
Melissa Knodel

Dr. Melanie (Spain) Loblaco
Carmela Christensen

George Lucas
Robert A. Judelson

Patrick Ludwig
Robert A. Ludwig

Melissa Maguire
Madeleine K. Maguire
Donna K. Metzler

Katherine Malkin
Robert A. Judelson

Sharon Markman
Ellen Havdala
Robin Loewenberg Tebbe & Mark Tebbe

Massey Family
Charlene L. Holtz

Gil Matar
Joseph Shapiro

Maureen McKeough
Kevin McKeough

Reverend Kathy D. McNair
Patricia Robbins Caldwell

Mr. & Mrs. John P. Metzger
Jim & Ann Hogan

Edwin Morales
Lisa Staiger

Kevin Morrison
Lora Sanberg

The Mother of Ron & Guilla Brniak & Dan & P.J. Pritts
Glen A. Ariel

Sharon Moudvy
Robert M. Edmunds

Eric Mraz
Barry Smith

Phyllis Murphy
Darcia R. Brundidge

My Children
Katherine Sheppard

Max Nutkowitz
Gary S. Stephans

Joseph & Tess O'Hern
Frances M. O'Hern

Julia Marie O'Hern
Frances M. O'Hern

The O'Hern Family
Frances M. O'Hern

Stephen & Stephanie Oliver
Marion M. Evans

Clara Orban
Mr. Scott DePierro

Our Wedding
Deena Heller

Tim & Larissa Parrott
Karilyn Parrott

Italia M. Perrone
Pasquale Perrone

Steve & Cheryl Pedersen
Adam & Mara Wilhelm

Ken Perlmutter
Mark Bucior
Brian & Michele Katz
Tom Oles
Ann & Marc Reinisch
David & Jamie Schwartz
Elisa K. Spain
Jonathan & Julie Walner

Katie Pieper
Christina Donovan

Richard & Karen Pigott
Pat & Jim Nack

Alicia & Peter Pond
Nancy Pond Boostrom & Gary Boostrom
Tina M. Erickson & Mike Krutsch
Lyndsay Pond White

Alicia Pond
Nancy & Gary Boostrom
Frank B. Chauner
The Gordon Family
Patricia & Richard Jay

Christy Prassas
Tina M. Erickson & Mike Krutsch
Glori Rosenson
Barbara M. Sipe

Ron & Linda Rashkow
Robert A. Judelson

Alison Ferrari-Rio & Dave Rio
Greg & Beth Morris

Mrs. Therese Rosen
John J. Rosen

Bryant Rosenwinkel
Jennifer Lynn Stringfellow

The Rossi Family
Carolyn Jean Klein

Rev. Jen Rude
Marilyn G. Mason

Sarah Ruthven
Kelly VanBrouwer

Lora Sanberg
Glen R. Cornblath
Dr. Renee L. Gelman
Frederick M. Kaplan
Melynda Lopin

Jane Sanderson
Sally & Greg Connell

Mory & Adam Sanderson
Lora Sanberg

Marilyn & David E. Scholl
James D. Alt & Deborah K. McKnight
Sara R. Alt

Diane Schulte
Dixie L. Downes

Daniel J. Schwartz
David Y. Schwartz

Barbara Sexton
Tina & Gonzalo Escobar

Tom Sharp
Gary S. Stephans

Erin, Ira, Andria, Isaac Slomski-Pritz
Neil A. Pritz & Kathleen M Slomski

Morgan Stanley Smith
Joey Trachtman

Yedida Solof
Carol & Ben Mackoff

Frances & William Springborn
Paul & Janice Springborn

Neil Steinberg
Daniel & Gloria Reisner

Mary Talbots
John & Deb Sobel

Jeff Taylor
Theresa L. Daniel

Tedd & Lisa
Lora Sanberg

Mara Terras
Harold Horwich

Mara Terras & Blake Fleeman
Adam & Bhavna Balaney
Richard Bell
Andrew Caccamo
Aaron Chapin
Pamela Corrie
Aaron DeCamp
Jean M. Evans
Katharyn Hanson
Timothy Harris
Angela Karides
Sarah Lustbader
Sandra L. Olsen & Donald B. Oliver
Eduardo Reina
Doby Rose
Mou Sengupta
Richard Tannenbaum
Christopher Wood

Rebecca Thal
Caroline T. Chauncey & Richard Thal

Their Employees
Mario Bernardi & Mike Ochoa

Peg Thomson
Hal Stewart

Dennis Thorn
Abhinandan Agrawal
Judith & Larry Braskamp
Jack A. Hertz
David W. Inlander
Mr. Kies, Jr.
Gail & Allen Shiner
Sarah & Jim Taich

The Trader Families
Andrew & Barry Sidorow

Swanette Triem
Angela F. Catania
Thomas F. Catania

Tejal Vakharia
Wendi Wright

John & Sharon Van Pelt

Barbara & Richard Prendergast

Carl Warschausky

Lorraine Nadelman

Pam & David Waud

Patricia M. Livingston

Deborah Weaver

Alan W. Weaver

Elliot Weisenberg

Scott DePierro

The Weisenbergs, DePierros, & Mulvihills

Dr. Elliot S. Weisenberg

Raymond & Stephanie White

Drs. Sally Metzler & George Dunea

Ray J. White

Catherine Shaw

Charles Adam Wilhelm

Susan Lindahl

Mary Wonderlick

Robert M. Edmunds

Deborah Wright

Linda A. Masini

David Wywialowski

Martha Perritt

Donald Sheber

Elien & Rosemary Young

Melissa Young

The Youth Outreach Team

Sandy Saberman

Kim Ziyavo

Patricia L. Dalke

Luan Zoellner

Emily Zoellner

IN MEMORY

Marvin Andich

Janine Landow-Esser & Jeffrey L. Esser

Jack Irving Angert

Seymour R. Angert

Steve Baker

Courtney Kenney

Margaret Bekker

William Bekker

Albert Baldocchi

Geraldine L. Wurster

Peter James Barrett

Helen M. Barrett

Florence & Lorence Bartelt

Garry A. Bartelt

Jessie Baugher

Diane C. Betten-Dahl

Daniel W. Bednarz

Sean D. Egan

Roger D. Shaw, Jr.

Jose Bedoya

Consuelo Bedoya-Witt & Thomas R. Witt

Harry Maxwell Bell

Pauline R. King

The Mother of Martyn & Doris**Bernstein**

Lisa A. Goldberg & Michael P. Cohen

Ralph & Elfrieda Billingham

David & Jean Billingham

Elizabeth J. Blasziński

Richard A. Lee

Anne & Robert Bloom

Leslie Walsh

Dennis Blum

Carol Blum

Bea Boehler

Myra, Ruth, Dorothy, Betty, & Barbara (Pi Epsilon Chi)

Philip Bornhofen

Frank J. Bornhofen

Victoria Bouie

Barbara Bouie-Scott

John Brenner

Carol A. Brenner

Buddy

Patrick Munzer

Bernice Buttinger

Joyce & Melvin Black

The Father of Bob Byrne

Lisa A. Goldberg & Michael P. Cohen

E. Julian Cabral

Esther Perez

Bobby Cann

Anne & Matt Bullard

Sophie Carlson

Gwynne N. Carlson

Jim Corno

Robert A. Judelson

Millie Curylo

Elizabeth Curylo

Nicholas Cuzman, Jr.

Ruth Cuzman

Rev. Raymond R. Day

Maryann G. Strain

Dorothy Dodge

Virgina & Conrad Zion

Henry H. Doering, Jr.

James & Katherine Hamann

Marilyn G. Ellis

Robert Emmet Ellis

Ernest Eugene Fair, Sr.

Carmen E. Fair

Eileen Fay

Dan & Miyoko Monnier
Ethel D. Nesson

Greg Fillar

Jade L. Dell

Marietta Frogge

James & Margaret Frogge

Cynthia L. Garver

Jorge Rodriguez

Burton Glazov

Robert A. Judelson

Gerry Grosskurth

Lisa A. Goldberg & Michael P. Cohen

Betty & Bill Hamann

Melissa Galli
The Augustines

George R. Hedgley

Christine M. Hedgley

Marie Cassidy Heinsohn

Robert Cassidy

Dorothy D. Holt

Jarrie A. Holt & Peter Hufnagl

Gertrude Horan

Karen T. Horan

The Horn Family

Barbara J. Turansky

John A. Imbra

Barbara & John Long
Joseph & Rose Rago

Jake

David & Mary Damisch

Jim, Louis & Delia

Marilyn K. Trant

Adam Chasnoff Johnson

Barbara Chasnoff

Lawler, Majella, & Mike Joyce

Joseph M. Joyce

Ron Kahn's father

Janine Landow-Esser & Jeffrey L. Esser

Martin Kamine

Yedida L. Soloff

Gladys, Harold & Michael Kaplan

Frederick M. Kaplan

Becky Kaspar

Darylynn Kaspar

Anne Keller

Sandra L. Kuzlik

Marilyn Keller

Susan Ginsburg

Judy Kemp

Sr. Maureen Dolan

June & Jack Klempner

Nancy & Jim Litke

Irene Kloc

Carolynn & Mark Messerly

Bryan Koehler

Barbara & David Abrams
James L. Alexander
Neil A. Bergman, C.P.A.
Aileen Blum
Selma Bouhl
Kathy Carroll & Dan Schonwald
Devon Bank
Fred Diamond
Lois Ennes
Dolores & Al Erlebacher

Nancy & Michael Fiore

Mary Ann & Brent Frank

Erica B. Freeman

Ida & Arnold Glassberg

Maureen M. Glassberg

Muriel & Marvin Glick

Barbara & Merrill Greenberger

Andrea & Max Greenspan

Carol & Rudolf Greven

Pam & Mark Gross

Reena & Michael Hais

Ike Hong & Pacific Construction
Services, Inc.

Patricia R. Johnson

Robert A. Judelson

Jody & Bob Lapp

Bill & Blair Lawlor

Ann & Marvin Leiner

Rachel Leiner

Mary Linberger & David Allen

Marie Maher

Bonnie & Ralph Mandell

Nancy & James Mattson

Elizabeth M. McDermott

Jennifer & Richard Meldman

Robert & Sandra Meldman

Jill & Robert Moss

Jill Moss/West School Social Fund

Kitty Mossett & Family

Lisa Palmleaf

Arlene & Samuel Pass

John Patin

Ira J. Peskind

Alicia & Peter Pond

Harriet Resnick

Robert Sabin

Katie Sakol

Richard D. Schechter

Sandra & Robert Silver

Deborah & John Sobel

Bill Stout & Family

David Stout & Family

Sheryl Stout

Colleen Sullivan & Max Nutkowitz

Bonnie Tandy

Bryan Koehler (cont'd)

Annette & John Vincent
Colleen F. White
Marianne Yates
Judy & Melvyn Zahn

Peggy Lavelle

Mary B. Lavelle

Mimi Lenort

Sylvia V. Stec

Idalicio Pereira Lial

Frederick M. Kaplan

Mary Jane Linder

Michael M. Linder

The Grandmother of Sylvia Lopatka

Lisa A. Goldberg & Michael P. Cohen

Helen Lutz

Carlene Lutz

James MacMahon

Mrs. Madelyn MacMahon

Joan Madsen

Joan Morrison

Ph Magnus

Thomas P. Magnus

Brendan Mahoney

Sally Swiss

Akiro Makino

Karen V. Maurer

Elise Mann

Duffie A. Adelson
Barbara Flynn Currie
Abraham D. & Esther P. Davis
Janice K. Finney
Naomi Lakeisha Finney
Barbara Hamari
Jane Heron
Margaret Hellie Huyck
Derek Issak
Adam Keyser
Laurel A. Lipkin
Laurie Ann Mann
Sylvia A. Mann
Patricia Negro
Caroline Steelberg
Patricia Sulewski
Arlene & Rod Walter
Susan Yacker

Helen Marik

Joseph J. Marik, Jr

Robert Mazer

Robert A. Judelson

Mary Rose & Dr. Joe McBride

Suzanne McBride Feldmann

Norma McKay

Teresa Joseph

Kevin R. McKeon

Kathleen A. Shalash

Margaret & Richard McLaren

Anne Hardy

The Mother of Hazzan & Debbie**Mizrahi**

Lisa A. Goldberg & Michael P. Cohen

Craig & John Metternich

JoAnn Metternich

Elvina Moen

Daniel Richard J. McGinnis

Gerald Mohr

David & Laura Mohr

Phyllis M. Moore

Clark C. Morris

Nathan Mosby

Jacqueline & Cleveland G. Mosby

David Norton

Sandra A. Janowski

Josephine Novak

Kathleen Novak

Bette Nuber

Frederick M. Kaplan

Jack & Valerie O'Connor

Denise F. Ursini

Patrick

Michael G. Higgins

Patsy

Carolyn & Anthony L. Kambich

Diana M. Perrone

Pasquale Perrone

Edward K. Poor III

King & Hope Poor

James Power

Janine Landow-Esser & Jeffrey L.
Esser

Julius H. Preston III

Kathryn Kraker

Dana Preston

Michael Price

Sr. Maureen Dolan

Richard Ricks-Jackson

Dr. Rosemary Ricks-Saulsby

Encarnacion Roldan, Jr.

Darius A. Villalobos

Ruth Gill Schmitz

Fred Schmitz

Edythe Schneider

Anne & Bill Goldstein

John Schneider

Marilynn & Bruce Johnston

Gladys Schuster

Jacob Cynamon-Murphy

Jane Seagren

David & Ann Robert

Charles Shapiro

Renetta Shapiro

Josephine Sherwood

Carlene Lutz

Tema Leah Siegel

Dennis R. Lord

Jerry Sinnwell

Marianne Zelewsky

Paul St. Aubin

Charles & Joan Grover

Henry F. Stec

Sylvia V. Stec

Carl Ludwig Stellner

Janine Landow-Esser & Jeffrey L.
Esser

The Father of Cynthia Stromberski

Lisa A. Goldberg & Michael P. Cohen

David Strouse

Vivek Acharya
Kelly Adair
Judith & Luke Albers
Virginia & Theodore Arey
Shelley Aron
David Bailey
Vivian J. Becker
Marc Bertrand

Michelle Bindeman

Marilyn & Philip Boria

Steven Breen

Janet M. Brettmann

Stewart A. Brown

Robert D. Caldwell

Allison Calisoff

Alan & Florita Cameron

Charles W. Campbell

Pat Campbell

M. Phyllis Carroll

Danielle Cassidy

Matthew Chan

Thomas Cunningham

Jeanne E. Davik

Thomas J. Digenan

Scott Dolan

Doris Dornberger

Patricia & Michael Dow

Alec Duchatellier

John Dugenske

Mark & Susan Dyer

David & Joan Edgington

Craig Ellinger

Barbara English

Jill P. Fine

Mrs. Eleanor F. Fralick

Charles J. Freund

Christine M. Friend

Patricia & Richard Fumerton

John Grimstad

Mary & Thomas Grittani

Delphine Grosser

David & Joyce Haeckel

Janna Hahn

Jennifer Haidu

Jeffrey Haleen

Sam & Carolyn Hill

Barbara B. Hintersdorf

Joanne & Raymond Hofer, Jr.

John & Susan Holtrup

Debra Howard

Susan Hudson

Warren Hurlburt

Jane Hutson

Joan Jackson

Sarah B. Jacobs

Dimple Jobalia

Debbie Johnson

Doris E. Johnson

Jill & Ned Johnston

Melinda J. Kautz

Phyllis M. Kenny

John P. Kohlmeyer

Cheryl & Robert Kopecky

Michael Lammers

Dorothy E. Larsen

James Law

John Leonard

Marge & Susan A. Leslie

Ju Chen Lin

Linda & Bill Lyman

Jim Malles

Sandra Matthias

Donald McClatchy

Joanne & John McDonald

Chris K. Mika

Jason Mullin

Lee P. Murphy

Charlotte & Frank Mushow

Mary & Ronald Nelson

Karen & Emil Novak

Jeannette & Charles Palmer

Dr. Robert W. Parsons

Branimir Petranovic

Joseph Pittman

Sally & Michael S. Pope

Raquel Porter

Linda J. Pressner

Jennifer M. Rabideau

Ryan Raymond

Kathryn & Robert P. Renier

Dr. Thomas J. Rogers

David Rothweiler

Robert Sabatino

Brett M. Schechterman

Julie Schoening

Phyllis Slavinskias

Connie & Terry Smith

Stacey & David Solin

David Strouse (cont'd)

Eric Staudt
 Phillip Stec
 Betty Olive Strouse
 Lee & Joan Strouse
 Jean & Stanley Swan
 Jennifer Sylvia
 Eileen & John Taflan
 John Van Tassel
 David Vignolo
 Rebecca V. Villanueva
 Marianne & Daniel Wachholz
 David Walczak
 Gail L. Weber
 Linda & Tom Wheaton
 Catherine L. Witeck
 Mike Wochner
 Linda & John Zaremba

Dave & Jeff Strouse

Kathleen D'Amato
 Charlotte & Don Johnson

Florence C. Susralski

Patrick Kavala

Marilyn Taylor

Dorie R. Goldstein

Helen M. Terrulli

Timothy J. Alford
 Geneva M. Bauer
 Diana A. Dinager
 Tony Terrulli's coworkers at Lincoln
 Financial

Donald L. Thorn

Dennis W. Thorn

Dr. Robert J. Toohill

Ellen & Paul Schveri

Ethel Townsell

Calvin Townsell

William G. Trant

Marilyn K. Trant

Georgia Triplett

Sean Turner

The Turansky Family

Barbara J. Turansky

John Ultmann

Ruth Ultmann

Tom Unsworth

Jean M. Unsworth

Marvin Wagnild

Yvonne M. Yosseif

Roland Watts

Laura E. Lambert

Al Weber

Margaret & James Blair

Joan Wegner

Marilynn & R. Bruce Johnston

Eila & Ralph Weiss

Aaron J. Weiss

John Weiss

Janine Landow-Esser & Jeffrey L.
 Esser

Grace Vander Woude

Dennis W. Thorn

Nancy S. Westlake

Barbara D. Fedor

The Rev. Bruce Wheeler

Shann Bulger

Thomas Whelan

Lisa A. Goldberg & Michael P. Cohen

Margaret Wilkins

Marcelle J. Wilkins

Joseph P. William

Virginia M. Russell

Andrew Williams

Bette A. & Charles W. Marschall

Ray Wilson

Jody Jacobson

Stanley Winton

Carol & Ben Mackoff

Jeff Yelke

Marjorie K. Newpher

Khanna Youkhana

Mr. & Mrs. Elio F. Sidan

Harry & Jenny Zik

Neal Brailov

BEACONS OF HOPE

Supporters who make contributions on a monthly basis

Anonymous (10)

Jessica Agin
 Susan Allen
 Nathan Badera
 John J. Baffa
 Carmelo Barbaro
 William Bekker
 Dan & Louise Bockelmann
 Decima & Adam Brausa
 Michael R. Brewster
 Laura & Kenneth Brichetto
 Catherine Bullard
 Mattheis Carley
 John & Charleen Cepek
 Amy & Samuel Crider
 Alexis Curtis
 Karen K. Del Prete
 Karis Findlan
 Megan Flood
 Sharon M. Gaietto
 Sarah E. Generes
 Laurie & Brian Gingric
 Kenneth Green & Holly Wathan
 Dorothy J. Hoffner
 William Karnoscak
 David Kerastas
 Ann E. Kerbs
 William J. Lauck
 Angela Loewen
 Mary Kay McCaw
 Daniel McKeegan
 Mark P. Miller
 Karen Mirante
 Kristen Mongoven
 Annie & Scott Mygind
 Joseph Negri
 Richard Nordstrom
 Frances M. O'Hern
 Christopher Pena
 Richard S. Penner

Jane Sisco Perkins & Jim Perkins

Sallie H. Pickens
 Michael A. Reed
 Maureen Reilly
 Dayle Roberts
 Ellen P. Rosenwinkel
 Leanne Sardiga
 Melissa Schulte
 Jeanne Schwenk Steen
 Louise Sterett
 Margaret Swanson
 Calvin Townsell
 Kathleen Vito
 Sandra Wronski
 John F. Zissis

IN-KIND DONORS

CONGREGATIONS

A Worshipper's Ministry, Chicago
 Agape Church
 Anshe Emet Synagogue, Chicago
 Augustana Lutheran Church of
 Hyde Park, Chicago
 Bethany United Church of Christ,
 Chicago
 Bethel United Church of Christ,
 Elmhurst
 Carter-Westminster United
 Presbyterian Church
 Catholic Order of Foresters
 Christ Church of Chicago, UCC
 Christian Church of Arlington Heights
 Concordia Lutheran Church, Chicago
 Congregational Church of
 Jefferson Park, Chicago
 Congregational Church of Park Manor,
 Chicago
 Congregational UCC of St. Charles
 Council of Catholic Women of St.
 Bonaventure's, Chicago
 Countryside Church Unitarian
 Universalist, Palatine

Covenant Community Presbyterian
 Church, Schofield
 Edgebrook Community Church,
 Chicago
 Edgebrook Lutheran Church, Chicago
 Epiphany United Church of Christ,
 Chicago
 Evanston Meeting of Friends
 Faith Community UCC, Bensenville
 First Congregational Church of
 Forest Glen
 First Congregational Church of
 Western Springs
 First Congregational Church of
 Wilmette
 First Presbyterian Church, La Grange
 First Presbyterian Church of Deerfield
 First Presbyterian Church of
 Lake Forest
 First Presbyterian Church, Wilmette
 Fourth Presbyterian Church, Chicago
 Friendship Presbyterian Church,
 Chicago
 Garrett-Evangelical Theological
 Seminary, Evanston
 Gary Memorial United Methodist
 Church, Wheaton
 Glencoe Union Church
 Glenview Community Church
 Glenview United Methodist Church
 Gloria Dei Lutheran Church,
 Northbrook
 Good Shepherd Presbyterian Church,
 Chicago
 Grace Lutheran Church & School,
 River Forest
 Greater Faith Ministries International
 Harvard Family UCC, Oak Park
 Holy Angels AIDS Ministry, Chicago
 Holy Covenant Metropolitan
 Community Church, Brookfield
 Holy Family Catholic Parish, Inverness
 Holy Family Church, Chicago
 Holy Trinity Lutheran Church,
 Glenview

Immaculate Conception Church, Chicago
Immanuel Evangelical Lutheran Church, Chicago
Ivanhoe Congregational Church, Mundelein
Lake Street Church, Evanston
Lakeview Presbyterian Church, Chicago
Living Water Ministries, New Era
Lutheran Church of the Ascension, Northfield
Lutheran Church of the Good Shepherd, Prospect Heights
Lutheran Church of The Holy Spirit, Lincolnshire
Lyonsville Congregational UCC, Indian Head Park
Mission Dei
Morton Grove Community Church
Northfield Community Church
Northminster Presbyterian Church, Evanston
Old St. Patrick's Church, Chicago
Our Lady of Mercy Parish, Chicago
Our Lady of Ransom, Niles
Park Ridge Community Church
Park Ridge Presbyterian Church
Peace Memorial Church, Palos Park
Queen of All Saints, Chicago
Ravenswood Fellowship United Methodist Church, Chicago
Ravenswood United Church of Christ
Redeemer Lutheran Church, Hinsdale
Resurrection Lutheran Church, Chicago
Resurrection Lutheran Church, Franklin Park
Roselle United Methodist Church
Saint Bonaventure Church, Chicago
Saint Clements Church, Chicago
Sauganash Community Church, Chicago
Second Unitarian Church of Chicago
Seventh Presbyterian Church, Chicago

St. Alphonsus Church, Chicago
St. Anne Church, Barrington
St. Augustine's Episcopal Church, Wilmette
St. Christopher's Episcopal Church, Oak Park
St. Gregory's Episcopal Church, Deerfield
St. James Presbyterian Church, Chicago
St. John Brebeuf Parish, Niles
St. John's Episcopal, Chicago
St. John's Evangelical Lutheran Church, Wilmette
St. Joseph Church, Wilmette
St. Luke's Lutheran Church, Park Ridge
St. Mary of the Woods, Chicago
St. Mary's Episcopal Church, Park Ridge
St. Paul United Church of Christ, Chicago
St. Paul United Church of Christ, Franklin Park
St. Peter's Episcopal Church, Chicago
St. Peter's United Church of Christ, Elmhurst
St. Peter's United Church of Christ, Skokie
Summerdale Community Church, Chicago
Sweet Holy Spirit Church, Chicago
The Benedictine Sisters of Chicago
The Presbyterian Church of Palatine
The Westchester Community Church, Westchester
Trinity United Church of Christ, Chicago
Trinity United Church of Christ, Deerfield
Union Church of Hinsdale
United Church of Rogers Park
Unity in Chicago
Urban Village Church, Chicago
Wicker Park Lutheran Church, Chicago

Windy City Lions Club
Winnetka Congregational Church
Winnetka Covenant Church, Wilmette
Women of the Evangelical Church of America, Chicago

FOUNDATION, CORPORATIONS, AGENCIES

1888 Mills, LLC
ABA Section of Legal Education
Accenture
Adoption Center of Illinois
Alderman Ameya Pawar, 47th Ward
Alpha Kappa Alpha Sorority, Inc.
American Society of Travel Agents, Inc.
Ampersand, Inc.
Amy's Candy Bar
Arlington International Racecourse
Asolare Restaurant
Associated Options, Inc.
Bears Care
Believe Cakes
Big City Swing
Bikram Yoga Chicago
Bishop Noll Institute
Black & Pink Chicago
Black Ensemble Theater
Bloomington's
Blue Cross & Blue Shield of Illinois
BMO Harris Bank
Bob Campbell Photography
Bodhi Spiritual Center
Booz & Company
Brandtrust
Broadway in Chicago
Buffalo Phil's Pizza & Grille
Cape Horn Illustration
Cappex.com, LLC
Charles Ifergan Coiffures
Chateau Chantal

Chicago Blackhawk Charities
Chicago Blue Dolphins
Chicago Botanic Garden
Chicago Children's Theatre
Chicago Cubs, a McCormick Foundation Fund
Chicago Hip Mama Collective
Chicago History Museum
Chicago International Film Festival
Chicago Public Media
Chicago Shakespeare Theater
Chicago Sky
Chicago Water Sport & Rentals at 31st Street Harbor
Chicago-West Suburban PFLAG
Chicago White Sox Community Fund, a McCormick Foundation Fund
Chicago Zoological Society
Chula Vista Resort
Cicerone Certification Program
Cole & Young Jewelers
ComEd
Core Power Yoga
Divvy
Dominican University/The Minority Association of Pre-medical Students
DOOR
Dusek's/Punch House/Thalia Hall
East Bank Club
Eli's Cheesecake
Elmhurst College
Embassy Suites Orlando
Emilio's Tapas Restaurants
Endgrain
Erickson Electrical Equipment
Ethical Humanist Society, Skokie
exhale
Fairmont Chicago, Millennium Park
Fat Rice
Foresters
Found Kitchen & Social House
Francis W. Parker School
Gene Siskel Film Center
GFOA

Girl & The Goat
Glenwood Dance Studio
Goldman Sachs & Co.
Grand Lux Cafe
G's Boutique
Health Source of Wicker Park
Hesperia Lodge No. 411 AF & AM
Higher Grounds Trading Co.
Hilton Worldwide
Holy Trinity High School, Chicago
Home Depot Lincoln Park Store
Hotel Lincoln
Howells & Hood
Interfaith Youth Core, Chicago
Italian Village Restaurants
J. Andrew Salon
Jewel Heart Chicago
Jewish Child and Family Services
Johnson & Bell, Ltd.
Jones Day
Karen Marie Salon
Kincade's Bar & Grill
Kiwanis Club of Ravenswood
Kohl's
Koval Distillery
KPMG
L2O
Ladies of the Chicago Northshore Elks
Lady Gregory's
Lagunitas Brewing Company Chicago
Language Stars
Lettuce Entertain You Restaurants
Loyola Academy, Wilmette
Lucky Strike Lanes
Make It Better
Marion Jordan Elementary School, Palatine
Meeting Tomorrow
Merchant & Rhoades
Millenium Dog Walkers and Pet Care
Milt's BBQ For The Perplexed
Moto Restaurant
Museum of Contemporary Art, Chicago

Museum of Science and Industry,
Chicago
Music Box Theatre, Chicago
Music Institute of Chicago
Nana
NBC 5 Chicago
National Labor Relations Board
New Trier Township High School
Newark
North Side College Preparatory High
School
North Suburban Synagogue Beth El,
Highland Park
Northlight Theater
Northside Catholic School
Om on the Range Yoga Studio
Optum
Oral Health America
Organized Chaos
Oviatt House Bed and Breakfast
Pastoral Artisan Cheese, Bread &
Wine
Peoples Gas
Performers Music
PFLAG of Woodstock
Phil's Bar and Grille
Piven Theatre Workshop
Pranzo Italian Grill
Public House
Quarles & Brady LLP
Radio Flyer
Rainbow Girl Scout Troop
Revolution Brewing
River Valley Farmer's Table
Rosalind Franklin University
Rosebud Restaurants, Chicago
Rotary Chicago Lakeview
Saatchi & Saatchi
Saint Andrew School, Chicago
Santa Fe Performing Arts
Savvy Seconds and 1sts
Shedd Aquarium
Sheraton Chicago Hotel & Towers
Siena Tavern
Sitters Studio

Snap-on Tools
Southwest Airlines
Sprinkles Cupcakes
St. Andrews Women Philoptochos
Society
St. Ignatius College Prep - Volunteer
Corps
Stage Hands
Steppenwolf Theatre
Strategy&
Sunda: New Asian
Sunset Ridge Volunteer Center
The Chicago Bulls
The Denim Lounge
The Four Seasons Hotel
The French Pastry School
The Godfrey Hotel Chicago
The Goodman Theatre
The Guesthouse Hotel, Chicago
The Host Foundation
The Langham, Chicago
The Latin School of Chicago
The Lencic Performing Arts Center
The Neo-Futurists
The Peninsula Chicago
The Pleasure Chest
The Redhead Piano Bar
The Ritz-Carlton Hotel Company, LLC
The Ruth Page Center
The Second City
The Stained Glass
Theater Wit
Trader Joe's
Treasure Island
Troquet Ravenswood
Trunk Club
Twisted Spoke
United Airlines
Urban Athlete
Vaughn Occupational High School
Victory Gardens Theater
Vivettes
W Chicago Lakeshore
Walgreen Co.
Walt Disney World Co.

Wendella Sightseeing
Whole Foods Market, Chicago
Whole Foods Market, Sauganash
Wines For Humanity
Winnetka Youth Organization
Wishbone Restaurant
Woman's Board of Rush University
Medical Center
Yoga Now Inc.

INDIVIDUALS

Anonymous (7)
Gordon & Paula Addington
Kim Allen
Dean Alonis
Eduardo Alvarez
Carmen Alvarez-Moses
Alisa Amaral
Vicki M. Anderson
Nickolas Armstrong
Carol & Franklin Augustine
Vanessa Avila
Barbara & John Baran
Lisa Bassett
Gina Bavone
Lily Becker
Scott Behrens
Mr. & Mrs. Everett J. Bell
David & Nicole Berger
Lisa Berreman
Savannah Boren
Ruth Boruszek
Kiantae A. Bowles
Cindy Brady
Ashton Brunn
Alexandra Hallas Button
Christine Calhoun
Ron Caperton
Paul Carlson
Maureen & Robert Carson
Thomas J. Casey
The Chilton Family
Dennis & Karen Chookaszian

John W. Christopher
Suzanne Cleaver
Virginia Cofer
Mary Coglianese
The Colgate Family
Brian Collie
Sherry Cornelio
Charles Courtney
Mary M. Cronin
Pamela S. Crowell & Ned Morley
Bridget Crowley
Mary Beth & David Cunat
Stephanie J. Cunningham
Alexis Curtis
Tom & Julie Danilek
Debra I. Danner
Lisa Daubney & Kirk Louthan
Susan & Nathaniel Davis
Arielle Deane
Patrick Devaney
Laura Donahne
Tony Drago
Leslie Dummitt
Terry & Sam Evans
Marietta Faso/Leopardogart
Brian & Kathy Fergemann
Jo Anne & Bob Fladung
Martha Forman
Barry Frank
Recia Frenn
Todd Friedman
Matt Frizzel
Margaret M. Glaser
Anne & Bill Goldstein
Ray & Jackie Good
Fred Gougler
Alan & Carol Greene
Erin Hallett
James & Donna Hamann
Patricia Hamann
Rita M. Hamann
Thomas Hanson
Nonda & Jean Harris
Megan Hart
Guy & Mary Ann Haupin

Kimberly Haupin
Brian & Eirene Heidelberger
Michele Henhapl
Egon & Angela Henry
Kittye Hermes
Beth Hillman
Donna Hippensteel
Mindy Hogan
Anita L. Holmes
Grace & Ike P. Hong
Chris Igo & Sam Cooperman
Laura Jansen & Greg Hiss
Carol Johnson
Erin Jones
Nathaniel Kaiser
Maria Kallmeyer
Sumandeep Kaur
Bonnie Kepplinger
Leo Kim
James & Ozana King
Melissa Kinzler
Ann Kisting
Cathy Koehler
Margaret Konieczny
Jennifer A. Korinek
Pascale Lattouf
Kirk Laubenstein
Christina Lazauskas
Marie Lefore
Bonnie & Chester Legenza
Paul Leinwand
Laurel A. Lipkin
Jane D. Lippow
Wayne & Patricia Lofthouse
Paul A. Lutter
Ayush Maheshwari
Erin Malloy
Marietta Marcin
Margo B. Maurer
Madeline Maxwell
Jennifer Mayes
Mary Kay McCaw
The McMahon Family
Brian McMahon
Liliana Milewski

Lisa Minich
Lisa D. Minott
Viridiana Miranda
Jeffrey Mohr
Lynn Mondo
David Mondrus
Alyson Moser
Christine Mueller
Mai Nanthavinh
Peggy T. Nasti
Gary L. Neilson
Ethel D. Nesson
Laurel A. Neu
Todd Neumann
Margaret & Edward Niimi
Amanda Niro
Vereen Nordstrom
Betsy Nore
Rebekah Noveo
Dorothy Oakley
June Maguire Ozmon
Katie Palmer
Fred & Sue Parsons
Janice Patocka & Darius-Girenas
Petrina Patti
Corina Perez
Barbara & Robert P. Perkaus, Jr.
Ann Pierce
Alicia & Peter Pond
Amika Porwal
Joseph B. Potthast
Tracy Poyser
Karl & Claudia Raack
Mary Hutchings Reed
Joan Reuter
Jean Richardson
Chuck & Cathy Ripp
Susan Roach
Robin Lee Roberts
Jennifer Roche
Seva Rodnayansky
Ruth Rodriguez
Barbara Rogers
Leonard Rogtrep
Ellen Romberg

Susan Rusk
Jill & Allan Ruter
Donna & Rick Ryding
Mory & Adam Sanderson
Kristin Savino
Karen Schafer
Rhonda & Gary Scheller
Andrew Schmahl
Barbara & Paul Schneider
John S. Schultz
Carol Schweidel
Olivia Seagravos
Jenny & Nick Semaca
Francesco Sguanci
Donald Sheber
Rosanne Simikowski
Lee & Allen Skalecke/Captain Al's
Charter Boat Fleet
Dyhan Slaughter
Yana Snitko
Lisa Snyder
Anthony Stock
Lee & Joan Strouse
Stephen J. Suellentrop
Colleen Sullivan & Max Nutkowitz
Diane & Richard Suwanski
Sean Taylor & Sian Sutcliffe
Debbie Temple
Dennis W. Thorn
Andrew K. Tipping
Angelita Torres
Anna Totten
Sarah Towne
Roxy Trudeau
Caitlyn C.B. Truong
McCall Vollum
Steve Waller
Joe T. Walsh
Susan Walsh
Della Walter
James Z. Wang
Benjamin Wardell
Pamela & David Waud
Peter and Susan Wells
Jerry Weninger

Stephanie Nora White & Raymond J.
White, Jr.
Cass & Sam Williamson
Justin & Mike Wilson
Sandi Wisenberg
Jane Stroud Wright
Guy Zakrzewski
Lindsay Zimmerman
Susan L. Zupan

LONGTIME FRIENDS

Supporters who have remained active donors since at least 1999

Anonymous (70)
Gordon & Paula Addington
Toni L. Aiello
Barbara & Kenneth Alexander
Barbara W. Allen
Jerry Ann & Dick Allers
John V. Amato
Seymour R. Angert
David A. Arnold
Elizabeth Arsenault
Lucy & Peter Ascoli
Garold & Petrine Ashley
Doris Ayres & Les Teichner
Pamela R. Baker
Joan Banach
David Barford
Robert Beck
Betty J. Beckers
Tom & Siria Behrens
Ann Beland
Earl M. Bengtson
Gary & Mary Berens
James M. & Jean K. Berry
Victoria Lee Bigelow
Timuel D. Black
Kenneth L. & Margaret S. Block
John & Donna Bloniarz
Richard R. Blough
Julian M. Blumenthal
Timothy & Linda Bogan

Albert H. Bolger
Barbara Bolsen
William & Beverly Bolsen
Steven & Ifaat Bosse
Richard Bough & David Easterbrook
Anne Bowhay & Jeff Hanneman
Roy & Mary Bowman
Wayne, Karen & Christie Boyles
Ellen Brady
James & Nancy Brandt
Wayne E. Bretl
Richard H. Brewer & Mary Ann
Schwartz
Aaron D. Brodsky
Patricia Broughton
Deborah Brown
Donald A. Campbell
Leonard Canino
Norma Lee Cape
Velaine Carnall
Phillip J. Carrigan & Mary Clare Jakes
Camille Caruso
Ronald P. Centanni
John & Charleen Cepek
J. Harley & Jean B. Chapman
Frank B. Chauner
Arthur & Audrey Christofersen
Barry & Lorraine Clark
Tom & Jo Clark
Morton Coburn
Bettie J. Coffey
Robert & Elizabeth Coffin
Ronald & Carol Cole
Stephen & Jane Coley
John & Diane Conway
Merle R. Cooper
Joseph E. & Susan S. Coughlin
Catherine Crino
Walter & Carole Crowley
Ruth Cuzman
Janice & Rick Daitchman
Lucinda Daniels
Ruth Daugherty
Robert Delaney
Mary D. Dickenson

Henrietta L. Dixon
Kathy Donaldson
Anne-Marie Douglas
Liz & Stephen Downes
Barbara B. Durand
David & Carol Eglsaer
Melanie D. Ehrhart
Mr. & Mrs. William L. Ekvall
Jean M. Engelkemeir, MD
Joan English
Paul & Janet Epner
Jane A. Kelley-Erickson & Rodney K.
Erickson
Tina M. Erickson & Mike Krutsch
Barbara A. Esposito
Donald & Martha Farley
Toni & Joel Fenchel
Ferd & Virginia Fender
Harve A. Ferrill
Susan Fink
Linda & Carl Fisher
Fred & Sarah Flosi
Norma J. Flynn
Nina & Pieter Fockens
Elizabeth K. Fox
Lester & Angie Frankenthal
Richard & Marguerite Franklin
Sandra Franz-Phillips
Judith E. Freebus
Ted & Patricia Frejek
Elaine Frick
Melissa & Ray Garson
James & Helen Gibbons
Ellen & Paul Gignilliat
Joan Gilmour
Sam J. Giovenco
Anne & Bill Goldstein
Louise E. Goos
Susan & Bruce Gottschall
Jerry D. Grant
David G. Graupner
Richard & Mary Gray
Dr. Andrew Griffin & Ms. Moira Collins
Norman & Linda Groetzinger
Kenneth & Kathleen Groh

Dorothy Grossman
James P. Grusecki
Ada Mary Gugenheim
Dr. & Mrs. Rolf M. Gunnar
Louise Hacker
John & Dana Hagenah
Tom & Nancy Hanson
Lois F. Hauselman
Kristine M. Healy
Kurt & Gayle Hedlund
Russell & Lisa Henning
Henry Hill
Robert Hinchsliff
Benjamin Ho
Sarah A. Hoban
John R. Hoffman
Sarai Hoffman & Stephen T. Pratt
Janet Connor Holabird
Harriet Holderness & Jim Luebchow
Norman & Barbara Hollenberg
James & Wanda Hollensteiner
Rev. Gloria G. Hopewell
Karen T. Horan
Karen W. Howell
Jane Trueheart Huels
Karen Hutchings
Sarah & Robert Hutchins
Robert & Maria Jacobson
Peter & Tamara Jaffe-Notier
Jane H. Jahn
Robert C. & Beth Ann Janssen
David H. Joel & Susan Holtzman
Mr. & Mrs. Carl Johanson, Jr.
George & Joan Johnson
Sharon M. Johnson
Richard A. Jurs
Silas Keehn
Kathleen Kelly
Patrick J. Kelly
Marion & Chuck Kierscht
Michael J. Kiley
Ken Knauf
Rev. Eddie Knox, Jr.
Robert Kohl & Clark Pellett
Christina Kozich

William Kristofek
Elizabeth A. Kurman
Hans & Barbara Lagoni
Peter Landon & Karen Patinkin
Robert & Margaret Lane
Marti & George Lannert
Linda L. Larson
Steven & Susan Larson
Robert Lau
Mrs. Frederick R. Lent
Nancy B. Leonard
William J. Links
Janice Liten & Mike Schnur
Wayne & Patricia Lofthouse
Ray & Mary Lopata
Mark S. Lovdjieff
Brian & Kim Love
Robert J. Lucas
Bess A. Ludik
Sylvia Lynch
Sheila A. Lyne, RSM
Phyllis Lyons
John & Bette MacLennan
Anne Mair
Richard M. Majko
Herbert Malkind
Charles V. Maloney
Carole Marchi
Steve Martin
Andrew & Kelly Masse
Susan F. Maul
Rev. Charles & Nancy Mayer
Thomas & Mary Ann Mazukelli
Gordon & Meridyth McIntosh
Bruce & Jane McLagan
Bozena & John McLees
Mary Mesich
Henry Messerschmidt
JoAnn Metternich
Samuel & Mary Mirza
Ed & Marcia Moore
Anne D. Morgan
John & Naomi Morris
Vivian L. Morrissey
Jim Motzer

Karen Mouscher
William R. Muenster
Geoffrey & Karyn Murphy
Helen Murray & Henry Dwyer
Mieko & Yuko Nasu
Marilyn Noetl
Betsy Nore
Rita M. Novak
Michael & Vivian O'Rourke
William & Cathleen Osborn
Richard A. Ott
John & Christel Owens
Vasilios & Helen Papaioannou
Harriet J. Papp
Mr. and Mrs. Norman Patinkin
Janice Patocka
Maureen & Richard Pekosh
Roxelyn M. Pepper
Martin Perry & Barbara Williams
Joy L. Peters
David & Claudette Peterson
E. Scott Peterson & Judith M. Desenis
Richard Peterson & Rev. Wayne
Bradley
Leonore & Thomas Pettinger
Robert Pfitzenreuter
Elizabeth Baldwin Phillips
John & Sheila Pigott
Karen & Dick Pigott
Carol & Hadley Pihl
Anne F. Pollock
John Poorman
Robert & Joan Pope
Gwen Potucek
Jay H. Price, Jr.
Michael & Virginia Prisco
Clarence Rance & Carmen
Flores-Rance
Janet Rassenfoss & Alan Swanson
David & Sydney Reed
Frances S. Reedy
Maryse Richards & Brandon Taylor
Noma Richardson
Donald & Marilyn Rieser
Gerald Rizzer

Darlene & Rick Roberts
Lois H. Robinson
Ruth Rodriguez
Warner A. Rosenthal
Maria & Howard S. Rosenzweig
Clark & Lynette Ross
David B. Ruda
Antun & Milena Runac
Bernard M. Rupe
Virginia M. Russell
Ronald D. & Joyce A. Salfisberg
Abe Samuels
Jane Sanderson
John D. Santina
Rabbi Herman E. Schaalman
Vincent Paul Schall
Karen & Frank Schneider
Arlene D. Schultz
Catherine & Paul Schultz
Paul & Ellen Schweri
Mary Sebahar & William Clary
Charles Sennet
Mr. & Mrs. William N. Setterstrom
Richard J. Shaftic
Margaret Shaklee & Hillis Howie, Jr.
Leah Ann Shapiro
Timothy C. Sherck
William & Harlan Shropshire
Mr. & Mrs. Elio F. Sidan
William Signer
Eugene & Patricia Sikorovsky
Elizabeth M. Simpkin & David L.
Wetherbee
Paul & Helen Slivinski
Barry Smith
Matthew D. Smith
Rev. Thomas G. Smith, C.P.A.
Elizabeth Sohn-Hirsch
Michael A. Solock
Donald & Virginia Sorensen
Mary Ann Sorokie
Art & Sher Watts Spooner
Milton & Sandra Sprang
Charles & Renate Staley
James A. Stallwood

Mr. & Mrs. Lawrence E. Stange
Charles & Joan Staples
Sylvia V. Stec
John G. Stoner
Maryann G. Strain
Eric Strickland
Frances Sugden
Becky Sutton
Tom Swanson & Jo-Ellyn Dorsey
Swanson
Pam & Tim Szerlong
Tod Tappert & John Gallagher
Barbara & A. Robert Taylor
Robert B. Teska
Frank & Nina Thorp
Mr. & Mrs. William R. Tobey, Jr.
Norman E. Toft
Margaret H. Travelli
Henry & Janet Underwood
Mrs. Herbert A. Vance
Nancy Vincent
Patricia Vine
Robert & Rose Wagner
John T. Walsh
Willa P. Warr
Mr. Peter & Dr. Margaret Watt-Morse
Stephen & Sherrill Weary
Ralph & Bonnie Wehrenberg
Barbara A. Weithaus
Mr. & Mrs. George E. Wendt, Jr.
Mrs. Frank O. Wetmore II
James D. Wiltshire, Jr.
James & Sheila Wolfe
Alain & Barbara Wood-Prince
Michael & Mary Woolever
Alice Wozniak
Jane Stroud Wright
Rocky Yamanaka
Lisa Yondorf
Trudi Zbinden
Dr. Lawrence & Judith Zimmerman
Virgina & Conrad Zion

BOARD OF DIRECTORS

Robert A. Carson, Chair
Brian D. Fergemann, Vice Chair
Arielle Deane, Secretary
Laurel A. Neu, Treasurer

Gordon Addington	Alicia Pond
Barbara Baran	Ellen Romberg
Dave Berger	Allan J. Ruter
Kiantae A. Bowles	Nick Semaca
Rev. Shawna Bowman	Sharbel Shamoon
William A. Goldstein	Sean T. Taylor
Ike Hong	Dennis W. Thorn
Leo Kim	Andrew Thorrens
Jim King	Carl W. Warschausky
Max Nutkowitz	Raymond J. White, Jr.
Keisha Parker	

Directors Emeriti
Rev. Thomas Behrens,
Founding President & Former CEO
Chester A. Gougis
Robert Jordan, Jr.
Richard Pigott
Lora Sanberg

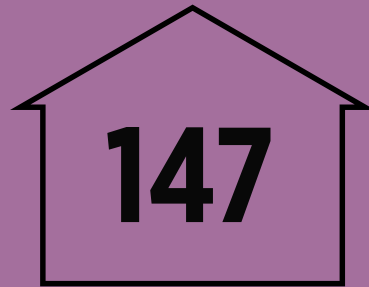
EXECUTIVE TEAM

Paul W. Hamann
President & CEO
Barbara Bolsen
Vice President of Strategic Partnerships & Community Engagement
Melissa Maguire
Vice President of Mission Fulfillment
Christy Prassas
Vice President of Development & External Relations
Erin Ryan
Vice President of Operations



474

youth and **44 of their children** found safe shelter at The Night Ministry's four youth shelter programs



147

young people who engaged in The Night Ministry's youth programs last year **transitioned into safe, stable youth housing**

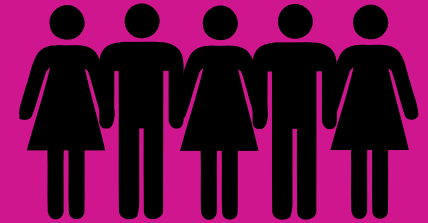
HIV
+

728 homeless or precariously housed individuals were tested for HIV antibodies. **9 tested positive** and all who tested positive were **firmly linked to care**

1,226 health assessments were performed for homeless, precariously housed and uninsured individuals



More than 60%



of those who visit The Night Ministry's Health Outreach Bus report that relationships they built at the Bus have led to new opportunities*

**Data collected during our 2nd annual health outreach survey on May 19-20, 2014*



More than 25%

of those who visit The Night Ministry's Health Outreach Bus report that the food they receive at the Bus is the only food they've had that day*

4711 N. Ravenswood Ave. • Chicago, IL 60640 • (773) 784-9000

Learn more at www.thenightministry.org. Find us on

