



**THE NIGHT
MINISTRY**[®]

FY 2019 ANNUAL REPORT

www.thenightministry.org Phone: 773-784-9000 Fax: 773-784-5865



The Night Ministry is a Chicago-based organization that works to provide housing, health care, and human connection to members of our community struggling with poverty or homelessness.

Every day, we offer a lifeline to forgotten members of our community.

We serve everyone without concern for race, ethnicity, sexual orientation, gender identity, or religion.

DEAR FRIENDS,



On behalf of the Board of Directors and Staff of The Night Ministry, we are proud to share The Night Ministry's Fiscal Year 2019 Annual Report with you. We gratefully acknowledge your support as a valued partner in our mission.

FY 2019 was a year of milestones at The Night Ministry. We identified a facility that, when ready for occupation in spring of 2020, will help us achieve several goals of our current strategic plan, *Serving in the Next Decade*. Along the way, we were reminded of the tremendous support in the community for our work, and for the city's homeless population, as our friends came out to support us during a challenging zoning process. In the midst of record-breaking frigid weather at the end of January, the staff of our Outreach and Health Ministry Program and Youth Housing Program provided critical support and shelter for our city's most vulnerable residents at a particularly dangerous time. In the spring, six residents of our newest housing program, Phoenix Hall—which supports high school students experiencing housing instability—

donned the gap and gown to be awarded their diplomas. Meanwhile, we welcomed a diverse group of new members onto our Board of Directors, and our Associate Board redefined its role as ambassadors for our mission across the city.

With you by our side, over the course of the year, The Night Ministry served more than 6,000 young people and adults. Across our five Youth Housing Programs, we provided safe shelter for 462 young adults and 63 of their infants and toddlers. Our Outreach and Health Ministry Program prevented 344 visits to the emergency room, which saved the public health system approximately \$699,000, and treated nearly 800 conditions that otherwise would have been uncared for. Our volunteers donated more than 25,000 hours of their time and served nearly 77,000 meals to individuals who had little or nothing to eat.

As we share these numbers related to the housing and health care The Night Ministry provided last year, we reflect on the third part of our

mission, something that is not as easy to measure. That is, the human connection that underpins all of what we do—the practices of acceptance, compassion, and empathy; of listening and offering help without conditions; of being a steady, reliable presence in the lives of all of those whom we serve, individuals often cast aside and forgotten by our society. In doing so, we are grateful for the connection we share with you.

We hope that you will join us in celebrating the milestones highlighted in the following report, and we look forward to your continued support in the future.

With sincere appreciation,

A handwritten signature in black ink that reads "Paul W. Hamann". The signature is fluid and cursive.

Paul W. Hamann
President & CEO

A handwritten signature in black ink that reads "Alicia Pond". The signature is fluid and cursive.

Alicia Pond
2019 Board Chair

FY 2019 BOARD OF DIRECTORS

(JULY 1, 2018 – JUNE 30, 2019)

OFFICERS:

Alicia Pond,
Chair

Mark Warren,
Vice Chair

Kiantae A. Bowles,
Secretary

James R. King,
Treasurer

DIRECTORS:

Gordon Addington

Dan Alter

Bennett Applegate, Jr.

Barbara Baran

Dave Berger

Michael V. Borromeo

Rev. Shawna Bowman

Mini Datta

William A. Goldstein

Carol Hogan

Ike Hong

Suzanne Hoyes

Norman Jeddelloh

Terrence McMahon

Don J. Mizerk

Dave Ortman

Dana S. Ringer

Allan J. Ruter

Dennis W. Thorn

Ted Tomaras

Dan Kish,
*FY19 Kellogg
Board Fellow*

DIRECTORS EMERITI:

Rev. Thomas Behrens,
*Founding President &
Former CEO*

Chester A. Gougis

Robert H. Jordan, Jr.

Richard Pigott

Carl W. Warschausky

EXECUTIVE TEAM:

Paul W. Hamann,
President & CEO

Erin Ryan,
Senior Vice President

Barbara Bolsen,
*Vice President of
Strategic Partnerships &
Community Engagement*

Christy Prassas,
*Vice President of
Development &
External Relations*

FY 2019 FINANCIALS

(JULY 1, 2018 – JUNE 30, 2019)

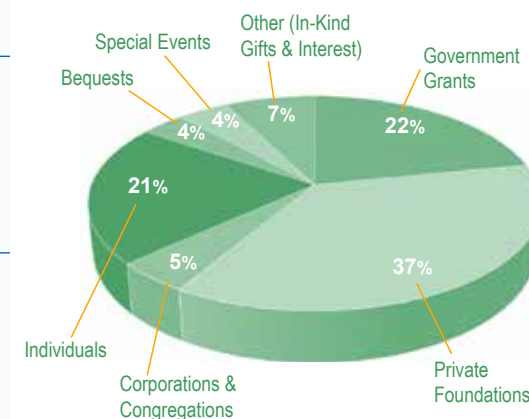
REVENUE

		Excludes campaign revenues and expenses	All revenues and expenses including campaign	Excludes campaign revenues but includes campaign expenses
Grants & Contracts				
Government	\$	1,762,313	1,762,313	1,762,313
Private Foundations		2,969,340	2,969,340	2,969,340
Corporations & Congregations		374,693	374,693	374,693
Total Grants & Contracts		5,106,346	5,106,346	5,106,346
Individuals		1,703,885	1,703,885	1,703,885
Bequests		304,231	304,231	304,231
Special Events, net		342,122	342,122	342,122
Other (In-Kind Gifts and Interest)		613,032	613,032	613,032
TOTAL OPERATING REVENUE	\$	8,069,616	8,069,616	8,069,616
Capital Campaign Revenue			3,927,820	
Total Revenues		8,069,616	11,997,436	8,069,616

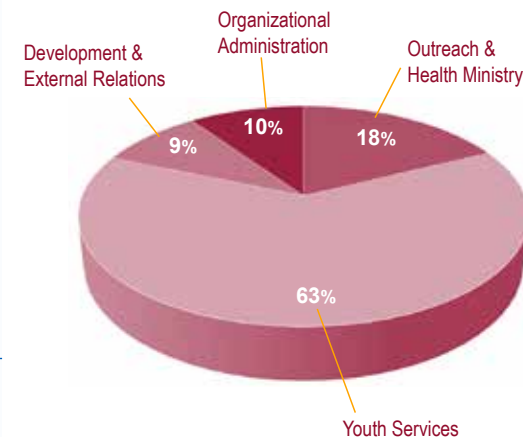
EXPENSES BY FUNCTIONAL AREA

Outreach & Health Ministry				
Total for Outreach & Health Ministry	\$	1,537,703	1,537,703	1,537,703
Youth Services				
YOUTH ENGAGEMENT SERVICES				
Overnight Shelter—The Crib		808,536	808,536	808,536
Youth Outreach		417,435	417,435	417,435
EARLY INTERVENTION SERVICES				
Pregnant and Parenting Youth Shelter, RAPP Program		899,650	899,650	899,650
Interim Youth Shelter		1,233,276	1,233,276	1,233,276
LONG-TERM RESIDENTIAL SERVICES				
STEPS Transitional Living Program		613,033	613,033	613,033
Phoenix Hall Transitional Living Program (North Lawndale)		502,824	502,824	502,824
YOUTH SUPPORTIVE SERVICES		989,524	989,524	989,524
Total Youth Services		5,464,278	5,464,278	5,464,278
Development & External Relations		767,813	929,263	929,263
Organizational Administration		850,484	850,484	850,484
TOTAL OPERATING EXPENSES BY FUNCTIONAL AREA	\$	8,620,278	8,781,728	8,781,728
OPERATING SURPLUS (DEFICIT)	\$	(550,662)	3,215,708	(712,112)
DEPRECIATION	\$	236,095	236,095	236,095
TOTAL SURPLUS (DEFICIT)**	\$	(786,757)	2,979,613	(948,207)

SOURCES OF INCOME*



USE OF FUNDS*



*Pie Charts Represent Operational Revenue and Expenses Only.

**The deficit in FY19 is due to multi-year grants in which the revenues were recorded in a previous fiscal year.



IMPACT HIGHLIGHTS

On a given night in 2019, the City of Chicago identified 5,290 residents living in shelters, on the streets, or in an environment not meant for human habitation. In FY 2019, **The Night Ministry served 6,050 young people and adults experiencing homelessness or poverty in Chicago.**

HOUSING



- Across **five** shelter programs, The Night Ministry housed **462 homeless young people** and **63** of their children.
- **1/3** of homeless young women in Cook County are pregnant or parenting. The Response-Ability Pregnant and Parenting Program (RAPPP) served **59 young moms** and **56 of their children.**
- Young adults without a high school diploma or GED are **more than four times** as likely to experience homelessness as their peers. All **six** of the high school seniors residing in Phoenix Hall **earned their diplomas.**

HEALTH CARE



- Nurse Practitioners and volunteer physicians **prevented 344 visits to the emergency room**, saving the public health system nearly **\$699,000 in ER costs.**
- The Outreach and Health Ministry Program provided **1,556 free health assessments** and treated **790 conditions** that otherwise would have gone uncared for.
- **372 individuals** at risk for HIV transmission learned their HIV status with a Rapid HIV test.

HUMAN CONNECTION



- Volunteers donated over **25,303 hours** of their time and served **76,935 meals** to individuals who would have otherwise gone hungry.
- **81%** of visitors to the Health Outreach Bus **feel accepted for who they are.**
- **84%** of Youth Programs' residents **met someone while at The Night Ministry whom they can rely on** after leaving the program.

Sources: City of Chicago 2019 Homeless Point-in-Time Count & Survey Report; Chapin Hall at the University of Chicago, *Youth Homelessness in Cook County, Illinois*, and *Missed Opportunities: Youth Homelessness in America*; The Night Ministry FY19 Departmental Dashboards, 2018-19 Resident Youth Survey, and 2019 Outreach and Health Ministry Street Survey

TOP MILESTONES

THE NIGHT MINISTRY SERVES CHICAGO'S HOMELESS DURING CHICAGO'S DEEP FREEZE

When dangerously low temperatures hit Chicago at the end of January 2019, The Night Ministry's staff responded in force. Our Street Medicine Team made well-being check-ups, offered rides to shelters and warming centers, and provided blankets, gloves, hats, hand and toe warmers, and other winter essentials to individuals out on the streets in the bitter cold. Meanwhile, The Crib overnight shelter stayed open around the clock for more than a week, providing 23 young adults with nowhere else to go safe, warm, and supportive shelter.

Our work during the Polar Vortex was featured in several media stories. To see some of them, visit www.thenightministry.org/blog/the-night-ministry-in-the-news



1.

A BIG MOVE IS UNDERWAY TO ENHANCE SERVICES

During the past few years, The Night Ministry had been searching for properties to address facility challenges related to The Crib overnight shelter and the Health Outreach Bus Program, as called for in its current strategic plan. In the meantime, the building in the Ravenswood neighborhood which had been housing the organization's headquarters for 17 was sold, and The Night Ministry learned that its lease would not be renewed.

That development opened up new possibilities for the property searches, and a building was located in Chicago's Bucktown neighborhood that could realize improvements to The Crib while providing overnight parking for the Bus and accommodate the organization's growing staff and their needs.

As part of the process, The Night Ministry began outreach to the Bucktown and Wicker Park communities and applied for a special use permit for The Crib. While the application encountered opposition from a small but vocal group of residents, longtime supporters of our mission, and new friends gained through outreach efforts, passionately advocated on our behalf. With their help, the application was approved.

Construction at The Night Ministry's new headquarters, located at 1735 North Ashland Avenue, began during the fall of 2019, and The Night Ministry began moving in during the spring of 2020.

2

To learn more about The Night Ministry's move and to watch a video tour of the new space, visit www.thenightministry.org/move



THE NIGHT MINISTRY LAUNCHES CAMPAIGN TO SUPPORT ENHANCEMENT AND INNOVATION OF SERVICES

3.

The Night Ministry embarked on an ambitious, \$8.7 million fundraising campaign in FY 2019 designed to help realize key goals of its current strategic plan while laying the groundwork for sustainable growth. **The Campaign for The Night Ministry** focuses on four areas for success:

1. Capital for the move to and improvements of 1735 North Ashland, the new home of The Crib, Health Outreach Program, and central administration
2. Capacity building and sustainability for the first three years of operation at 1735 North Ashland
3. Growing the endowment to facilitate resiliency in responding to future needs
4. Enhancing care at the Response-Ability Pregnant & Parenting Program (RAPPP)

So far, The Night Ministry has secured nearly 80% of the funds needed for the campaign. To discuss your contribution, contact Christy Prassas, Vice President of Development & External Relations, at christy@thenightministry.org or 773-506-6023.



Watch a video about The Campaign for The Night Ministry at vimeo.com/387488443

PHOENIX HALL EXPANDS ITS MISSION TO SERVE A WIDER BASE OF STUDENTS

When it opened in late summer of 2017, Phoenix Hall was one of the first housing programs in the country designed for students from a specific high school experiencing housing instability. Over the course of the last year, The Night Ministry's newest shelter program expanded its mission to serve students from other Chicago schools.

"We were finding that the need for supportive housing for students was as prevalent in the wider community as it was inside North Lawndale College Prep," said Allison McCann-Stevenson, Assistant Director of Long Term Residential Services at The Night Ministry.

In addition to expanding its reach, Phoenix Hall capped off the fiscal year with the graduations of all six of the high school seniors who were residing in the program.



4.

To read more about the developments at Phoenix Hall, visit www.thenightministry.org/blog/phoenix-hall-expands-its-mission-to-serve-a-wider-base-of-students-and-their-families

“THIS IS HOW WE DO HUMAN CONNECTION”

The Night Ministry celebrated the power of human connection at its Annual Lighting Up the Night Awards Dinner and Auction in June of 2019. Outreach Services Manager Faith Miller, volunteer Sam Ritchey, and Divahna Sullivan, a resident of Phoenix Hall, reflected on the importance and impact of the third aspect of the organization’s mission. Meanwhile, Paul Hamann, President & CEO, spoke about how human connection underpins everything The Night Ministry does.

“Why is human connection woven into the mission of The Night Ministry? Simply put, we cannot imagine any other way to deliver the services and resources we provide to Chicago’s most vulnerable community members. And for us, there is no other way,” he said.

5.

To read Paul Haman’s remarks on human connection, visit www.thenightministry.org/blog/celebrating-human-connection

“ Human connection literally and figuratively saved my life. It also took me out of the troubles of homelessness. ”

~ Divahna Sullivan



6

To read more about findings from the Sixth Annual Outreach and Health Ministry Street Survey, visit www.thenightministry.org/blog/housing-instability-and-inadequacy-common-among-health-outreach-bus-clients



SURVEYS YIELD IMPORTANT INFORMATION ABOUT THOSE WHOM THE NIGHT MINISTRY SERVES

As called for in its strategic plan, The Night Ministry cultivates a data-driven culture of learning to help measure the effectiveness of its services and guide the operation of programs. An important part of the process is gathering information and feedback from clients.

Surveys undertaken at the Health Outreach Bus in the spring of 2019 revealed that housing instability and inadequacy impact nearly all visitors to the Bus, with one in four reporting they are literally homeless. Meanwhile, those who do have housing live with conditions that suggest a lack of stability or adequacy. Half of respondents in a survey of Street Medicine clients reported that they feel safer due to the services The Night Ministry offers. Surveys at Youth Programs reveal that the average young person enters one of The Night Ministry's shelters with at least four needs, such as finding a long term place to stay, health concerns, help with children, continuing an education, and concerns about money or legal issues.

THE NIGHT MINISTRY PARTICIPATES IN NATIONAL DIALOGUES ON HOMELESSNESS

While attending conferences in Washington, D.C., over the past year, The Night Ministry staff met face-to-face with members of Congress to encourage them to support policy initiatives to end homelessness in Chicago and America. Meanwhile, in the fall, several staff, including President & CEO Paul Hamann, Senior Vice President Erin Ryan, Director of Mission Fulfillment Gregory Gross, and Assistant Director of Early Intervention Services Felitha Jones-Patterson, presented at the National Runaway and Homeless Youth Grantees Training in Austin, Texas. Staff also attended the True Colors Impact Summit in Atlanta, Georgia.

7.



YOUTH PROGRAM CLIENTS LEND THEIR VOICES TO THE NIGHT MINISTRY'S WEBSITE

The Night Ministry's Youth 4 Truth program provides clients of its Youth Programs with ten weeks of advocacy and leadership development in a cohort setting. Members of Youth 4 Truth began contributing blog posts to the organizations website in FY 2019, providing a new forum for them to express their opinions and have their voices heard. Posts ranged from reflections on how traumatic experiences can inspire us to help others to the transformative power of performing music.

8

In My Own Words: Music Saved My Life

Announcements Friday, 10 May 2019 1439 Hits



By Daniel Barber

Writing and performing music saved my life. When you're locked up, there's not much to do. I'd always loved poetry, so I spent my time reading, writing, and focusing on my vocabulary. Life doesn't always go your way, and to snap out of my depressive state, I had to put my thoughts into words on paper.

Follow the links below to read the blog posts from Youth 4 Truth members.

[www.thenightministry.org/
blog/in-my-own-words-what-
inspires-you-to-live-life](http://www.thenightministry.org/blog/in-my-own-words-what-inspires-you-to-live-life)

[www.thenightministry.org/
blog/in-my-own-words-
music-saved-my-life](http://www.thenightministry.org/blog/in-my-own-words-music-saved-my-life)

[www.thenightministry.org/
blog/in-my-own-words-for-
my-daughter-04-18-2019](http://www.thenightministry.org/blog/in-my-own-words-for-my-daughter-04-18-2019)

9.

For more information about
the Associate Board:
[www.thenightministry.org/
associate-board](http://www.thenightministry.org/associate-board)



THE ASSOCIATE BOARD REDEDICATES TO SERVICE AND PARTNERSHIP BUILDING

A passionate group of young professionals, the Associate Board has been supporting the mission of The Night Ministry since 2012. Last year, after raising more than \$80,000 at its annual Night Lights Gala, the Associate Board refined the roles and responsibilities of its members and developed new strategies for engaging with the organization and the individuals it serves, as well as the larger Chicago community. Plans include spending more time volunteering at The Night Ministry's programs, including serving meals to clients, while also connecting to the local business community via special events.

PHYSICIAN BRINGS DECADES OF HOSPITAL EXPERIENCE TO THE STREETS OF CHICAGO

After 35 years as an interventional cardiologist in Michigan, Dr. Ralph Ryan is now practicing on the streets of Chicago. Ryan provides free health care to individuals who are experiencing homelessness, as a volunteer physician with The Night Ministry's Outreach and Health Ministry Program, most often on the Street Medicine Team. Ryan, who is also a health care provider at PCC Austin Family Health Center, a free clinic on Chicago's West side, said he approaches his patients as equals.

"They are me. These are truly my sisters and brothers, and their needs are my needs," he said.

10.

Read more about Dr. Ryan and his work at The Night Ministry at www.thenightministry.org/blog/physician-brings-decades-of-hospital-experience-to-the-streets-of-chicago



FY 2019 CONTRIBUTIONS

The Night Ministry gratefully acknowledges all individuals, foundations, corporations, congregations, schools, Associate Board members, and members of the Board of Directors who tirelessly advocate in the community and secure gifts on our behalf. Please note that the below list includes only those gifts made directly to The Night Ministry between July 1, 2018, and June 30, 2019. If we have inadvertently omitted or misspelled your name, please help us correct our records by calling the development department at 773-506-6006.

BEACONS OF HOPE *(Monthly/Recurring Donors)*

Anonymous (40)	Susan & Edward Ciolkosz	Kenneth Green & Holly Wathan	Cindy & Paul Maturo	Leanne Sardiga & Chris Schluter
Courtney Adams	Susan Helene Couture	Jessica Griffiths	Yvette Maxie	Kendra Scheuerlein
Jessica Agin	Amy & Samuel Crider	Paul W. Hamann	James P. McCaffrey	Allison Schwarz
Barbara & Kenneth Alexander	Catherine Crino	Trevor Harvey	Sheelagh M. McGurn	Richard J. Shaftic
Susan Allen	James Davisson	Chris J. Higgins	Daniel McKeegan	Leslie A. Simmer
Lisa Kay Anderson-Shaw & Fred Zar	Leanne Dear	Dorothy J. Hoffner	Leo Meere	Loren Y. Simmons
Erin Archer	Karen K. Del Prete	Helen Jameson	Geoffrey Meyer	Arlie Sims
Lee & Donna Asher	Bertha De Priest	Dustin Johnson	Krysta Michorczyk	Jason Singleton
Diane Austin	Margaret Dewar	Rosebud Johnson	Perriann L. Miller	Dyhan Slaughter
William Bekker	Susan M. Diaz-Sonnefeldt	Sheila Johnson	Karen Mirante	Leigh Soares
Andreas Bell	Benjamin Apollo Dionysus	Michael D. Kelleher	Jean & George Misner	David S. Sperling
Bryan Berend	Patrick Dixon	Mary & Dennis Kelly	Jennifer R. Moran	Whitney Stein
Renee Blissett	Marisa & Robert Doherty	Edward J. Kennedy	Annie & Scott Mygind	Louise Sterett
David Borowski	Michael & Diane Dolesh	Ann E. Kerbs	Cathy Nathan	Martha Strong
Amy Brenner	Henrietta Dombrovskaya	James & Patricia Kowalkowski	Pauline Chiew Nolte & Robert Seymour	Lara Suvada
Laura & Kenneth Bricchetto	Lexie & Louis Dore	Sami Kruger	Frances M. O'Hern	Damon G. Taylor
Monica Brown	Lian Drago	Leslie Kuhagen	Christopher Pena	Andrea Tentner
Edith D. Browne/Clinical System Specialists, Inc.	Keira Dubowsky	Maia Lamdany	Jane Sisco Perkins & Jim Perkins	James F. Thaxton
Debra M. Bruce	Carole Edmark	William J. Lauck	Lorraine & Ronald Perlman	Nancy T. Trimble
Megan Brunner	Mary Anne Edwards	Kris & Sheri Lenzo	Tedd Peso	John & Virginia Ulaszek
Jessica W. Buha	Arthur S. Elstein	Teresa Lindem	Sallie H. Pickens	Kathleen Vito
Karen Bullen	Karis Findlan	Krystan Lordahl	Bernadine & Edward Pillar	Julia Wade
Denise Burch	Rebekah Fitchett	Jennifer Lors	Katherine & Michael Raleigh	Dianne Washburn
Kathleen & John Bychowski	Megan Flood	Anne & Thomas Lysaught	Jessica K. Reese	Alma J. Washington
Donna L. Callahan & Martin J. Fitzgerald	Mark A. Fraser	Sylvia J. Maconaghy	Mary Louise Carter Rhodes	Mary P. Bacik White
Barbara A. Campagna	James Friedland	James Madden	Caroline A. Roberts	Lisa & David Wilcoxon
Mattheis Carley	Rosalie K. Fruchter	Kenneth J. Madura	Dayle Roberts	Anna Rose Wooden
Serena A. Carroll	Debra Fuller	Julie S. Mallory	Tulia M. Rubero	Benjamin Worrel
Charleen Cepek	Sarah E. Generes	Mary Elizabeth Mannebach	Erin Ryan & Ryan Spangler	Sandra Wronski
Caitlin Karen Cervenka	Laurie & Brian Gingrich	Allison Manto	Christina & Brandon Salesberry	Sarah Yawn
	Mary Chasen Golosinski	Roseann M. Mark	Heather Sanderson	Kayla J. Yurick
	Robert Gordon & Sophie Haroutunian-Gordon	Queen Ann Marsh	Chris Santiago	Laura Zeller
		Shawn Marsh		Sherry & Tom Zimmerman

AGENCIES, BUSINESSES, CIVIC GROUPS, CORPORATIONS, FOUNDATIONS, GOVERNMENT, SCHOOLS

Luminaries

\$25,000+

Anonymous (2)
Chicago Dept. of Family and Support Services
Chicago Dept. of Public Health ComEd
Emergency Food and Shelter National Board Program
Empower to Succeed Foundation
Illinois Dept. of Human Services
The Grainger Foundation
Joseph & Bessie Feinberg Foundation

Julius Frankel Foundation
LGBT Community Fund at The Chicago Community Trust
Lloyd A. Fry Foundation
Northwestern University - Kellogg School of Management
Polk Bros. Foundation
The Berger Family Foundation, Inc.
The Chicago Community Trust
The Crown Family
The Dancing Skies Foundation
The Fama Family Charitable Fund
The Harry and Jeanette Weinberg Foundation
The Hermitage Foundation

The Otho S. A. Sprague Memorial Institute
The Potter's Clay Foundation
The Wunderkinder Foundation
U.S. Dept. of Health & Human Services
U.S. Dept. of Housing & Urban Development
VNA Foundation
William Erby Smith Foundation

Constellations

\$10,000 - \$24,999

Anonymous (2)
A.G. Cox Charity Trust

Blue Cross and Blue Shield of Illinois
BMO Harris Bank
Bowman C. Lingle Trust, BMO Harris Private Bank
Charles & M. R. Shapiro Foundation
Chicago Foundation for Women
Colonel Stanley R. McNeil Foundation, Bank of America, N.A., Trustee
Conant Family Foundation
CVS Health
Dr. Scholl Foundation
Edmond & Alice Opler Foundation
Gil & Marlene Bowen Christian Outreach Fund
Grant Healthcare Foundation
Helen Brach Foundation
Hoellen Family Foundation
International Language Services, Inc.
Mr. & Mrs. Michael Keiser Donor-Advised Fund
National Association of Free & Charitable Clinics
North Shore Exchange
Northern Trust
Prince Charitable Trusts
Renaissance Charitable Foundation, Inc.
Sage Foundation
The Allstate Foundation
The Andrew and Alice Fischer Charitable Trust
The Bank of America Charitable Foundation, Inc.
The Blowitz-Ridgeway Foundation
The John R. Houlsby Foundation
The Joyce Foundation

The Negaunee Foundation
The Owens Foundation
The Pierce Family Charitable Foundation
The Speiser Family Foundation
Therese Foundation
W.P. & H.B. White Foundation

City Lights

\$5,000 - \$9,999

Anonymous (2)
Alfredo & Ada Capitanini Foundation
Butler Family Foundation
CBOE Global Markets
Charles Schwab & Co., Inc.
Charles Schwab Foundation
Fifth Third Bank Chicago
Fred J. Brunner Foundation
George M. Eisenberg Foundation for Charities
Husch Blackwell LLP
JKS Foundation
Kellogg School of Management at Northwestern University
Latham & Watkins LLP
Lincoln Property Company
Loeb & Loeb LLP
Morgan Stanley Foundation
Patrick and Anna M. Cudahy Fund
Peters Foundation
Quarles & Brady LLP
Rush University Medical Center
Season of Concern
Sulzer Family Foundation
The Chatlos Foundation, Inc.
The M.J. O'Brien Family Foundation
The Siragusa Family Foundation
The Sondheimer Family Charitable Foundation



The Webb Foundation
 The William R. Johnson
 Family Foundation
 Vistex
 Wheeler Kearns Architects

Guiding Lights

\$1,000 - \$4,999

Anonymous (2)
 AIDS Foundation of Chicago
 AmazonSmile Foundation
 American Society of
 Travel Agents
 Arch W. Shaw Foundation
 Arkes Family Foundation
 Benjamin B. Green-Field
 Foundation
 Blue Gator Foundation
 Bucciferro Management
 Services
 Bulley & Andrews LLC
 C. Louis Meyer Family
 Foundation
 Centennial Securities
 Company
 Chandler Consulting LTD
 Charles River Associates
 Chicago Shares
 Cole Family Charitable Fund,
 a Donor Advised Fund
 of The U.S. Charitable
 Gift Trust
 Community Foundation of
 Greater Fort Wayne,
 The Luminous Fund
 Edward A. and Evelyn M. Dik
 Family Foundation
 Envestnet, Inc.
 Francis Beidler Foundation
 Frawley Family Foundation
 Gallery Victor Armendariz
 George P. White Foundation
 Gould & Ratner LLP
 Harry F. Chaddick & Elaine
 Chaddick Foundation, Inc.
 Illinois Tool Works Foundation
 IMC Chicago Charitable
 Foundation

Ira Kaufman Family Foundation/
 Stephen & Lori Kaufman
 Irving Harris Foundation
 Jack Ringer Family Foundation
 James and Caroline Monroe
 Buggie Fund/The Chicago
 Community Trust
 Jocarno Fund
 John Marshall Family Foundation
 Jones Day
 Kovler Family Foundation
 Lakeshore Foundation, Inc.
 Lanwermyer Family Fund
 Mary Lou Downs Foundation
 McDonald's Corporation
 McGraw Foundation
 Metro Chicago
 Modestus Bauer Foundation
 Mount Hope Cemetery
 Assn. LLC
 Netrix, LLC
 Park Shore Kennel Club, Inc.
 Paul W. Franke Family
 Foundation
 Peet's Coffee & Tea
 Philip M. Friedmann Family
 Charitable Trust
 Press Adelman Foundation
 R W and M L Hurckes Family
 Foundation
 Rachel B. Williams Foundation
 RBC Wealth Management
 Samuel Weinstein Family
 Foundation
 Sargent Family Foundation
 Shared Blessings Fund at
 The Chicago Community
 Foundation
 Spencer Foundation
 The CarMax Foundation
 The Crowd Theater
 The Dewan Foundation
 The Donnelley Foundation
 The Evans Beneditz Missionary
 Trust Fund
 The Gerald Norton Foundation
 The Hickey Family Foundation
 The John D. & Catherine T.
 MacArthur Foundation



The Lions Club of Long
 Grove, Inc.
 The Maurice Foundation
 The Robert Thomas Bobins
 Foundation
 The Thomas Family Foundation
 The Westin Michigan Avenue
 Thrivent Financial
 UCAN
 Walter and Caroline Sueske
 Charitable Trust
 Washington Square Health
 Foundation
 Washingtonian Health Care
 Foundation

Streetlights

\$500 - \$999

Anonymous (2)
 Academic Achievement
 Institute Corp.

Alliance of Chicago
 Community Health Services
 Cable Communications, Inc.
 Cetera Investment Services LLC
 Costco Wholesale
 Huron Consulting Group, Inc.
 Illinois Association of Free &
 Charitable Clinics
 Kardos Family Foundation
 Kendra Scott
 Leonard Family Charitable
 Foundation
 Midland IRA, Inc. Corporate
 Advised Fund, a Fund of
 the Southwest Florida
 Community Foundation
 Rose F. and Alice M. Koffend
 Foundation
 Sauganash Woman's Club
 Foundation
 Schultz & Williams

The Bank of America
 Foundation
 The Collins Family Foundation
 The Ellis/Ohl Fund, a Donor-
 Advised Fund at The Chicago
 Community Trust
 The Gelber Foundation
 The Lumpkin Family Foundation
 The Power Family Foundation
 The Walt Disney Company
 Foundation
 Tony DeRosa Foundation
 Toyota Financial Savings Bank
 UBS Matching Gift Program
 William and Wilma Dooley
 Foundation
 WPNT Ltd./Wixted Pope Nora
 Thompson & Associates
 Yorke Print Shoppe
 Zuckerman Family Foundation

CONGREGATIONS & DENOMINATIONS

Constellations

\$10,000 - \$24,999

Church of Christ Planting the Good Seed
Grace Evangelical Lutheran Church, Elmwood Park
Kenilworth Union Church
Lutheran Church of the Ascension, Northfield

City Lights

\$5,000 - \$9,999

American Province of Little Company of Mary Sisters
First Presbyterian Church of Lake Forest
Glencoe Union Church
Glenview Community Church

Union Church of Hinsdale
Winnetka Congregational Church

Guiding Lights

\$1,000 - \$4,999

Community Presbyterian Church of Clarendon Hills
Congregational United Church of Christ of Arlington Heights
Congregational UCC of St. Charles
Faith United Methodist Church of Orland Park
First Congregational Church of La Grange
First Congregational Church of Western Springs
First Congregational Church of Wilmette

First Congregational United Church of Christ, Naperville
First Presbyterian Church of La Grange
First Presbyterian Church of Libertyville
First Presbyterian Church of Wilmette
First United Methodist Church, La Grange
First United Methodist Church, Oak Park
Fourth Presbyterian Church, Chicago
Gloria Dei Lutheran Church, Downers Grove
Good Shepherd Lutheran Church, Palos Heights

Grace Lutheran Church & School, River Forest
Highland Park Presbyterian Church
Holy Trinity Lutheran Church, Chicago
Illinois Conference of the United Church of Christ
Irving Park United Methodist Church, Chicago
Morton Grove Community Church
North Shore Baptist Church, Chicago
Northern Illinois Conference of the United Methodist Church
Our Saviour's Lutheran Church, Arlington Heights
Presbyterian Women of Park Ridge Presbyterian Church
Queen of All Saints Basilica, Chicago
Redeemer Lutheran Church, Hinsdale
Resurrection Lutheran Church, Chicago
Southminster Presbyterian Church, Arlington Heights
St. Gregory the Great Church, Chicago
St. Pauls United Church of Christ, Chicago
Trinity United Methodist Church, Mount Prospect
Women's Association of Glenview Community Church
Woman's Society of First Congregational Church of Western Springs
Yorkfield Presbyterian Church, Elmhurst

Streetlights

\$500 - \$999

Bridgeway Sunday Worship Service, Bensenville
Church of the Transfiguration, Palos Park
Community Baptist Church of Warrenville
Congregational Church of Park Manor, Chicago
Ebenezer Lutheran Church, Chicago
Edgebrook Community Church, Chicago
Evangelical Lutheran Bethel Congregational Church, Chicago
Evanston Meeting of Friends
First United Methodist Church of Park Ridge
Our Lady of Ransom, Niles
Pilgrim Congregational Church, Oak Park
Pilgrim Lutheran Church and School, Chicago
Prince of Peace UMC, Elk Grove Village
Saints Faith, Hope & Charity Catholic Church, Winnetka
Second Unitarian Church of Chicago
St. John's United Church of Christ, Mokena
St. Luke Presbyterian Church, Downers Grove
Unitarian Church of Hinsdale
Wellington Avenue United Church of Christ, Chicago



MATCHING GIFTS

AAbbott Laboratories	North American Industrial, Inc.
Alliance Data	Northern Trust
Allstate	Occidental Fire & Casualty Company
American Express Foundation	Peoples Gas Light and Coke Co.
ArcelorMittal	Pepsico Foundation
Arch Capital Services, Inc.	Pfizer Foundation
Blue Cross & Blue Shield of Illinois	Praxair
BMO Harris Bank	Salesforce
Brookfield Investment Management Inc.	Spencer Foundation
Capital One Services, LLC	The Arthur J. Gallagher Foundation
CBOE Global Markets	The Bank of America Foundation
Charles Schwab Foundation	The CarMax Foundation
CIT	The Chubb Charitable Foundation
ComEd, An Exelon Company	The Estee Lauder Companies
CTC Trading Group, LLC	The Gelber Foundation
Discover Financial Services	The Lumpkin Family Foundation
ExxonMobil Foundation	The Standard Insurance Company
Follett Corporation	The Walt Disney Company Foundation
Fossil	Toyota Financial Savings Bank
Gap Foundation	U.S. Bank Foundation
Goldman Sachs & Co.	U.S. Cellular
Grainger	UBS
Greater Horizons	USG Foundation, Inc.
Hollister Incorporated	Vistex
HSBC Philanthropic Programs	Willis Towers Watson
Huron Consulting Group, Inc.	Wonderful Giving
Illinois Tool Works Foundation	Zurich North America
IMC Chicago Charitable Foundation	
J. Crew	
JBT Corporation	
Liberty Mutual Insurance	
MassDevelopment	
McDonald's Corporation	
Midland National Life Insurance Co.	

TRIBUTE GIFTS

IN HONOR OF

(honoree's name in bold, donor's name in italics)

Heather Abbott
Leah Treat

Barbara Abrams
Arlene Pass

Tina Adachi
Mr. & Mrs. Scott W. Bannor

Gordon Addington
Manya & Sam Abrams
Mr. & Mrs. Edward A. Davis
Bertha DePriest
Remey J. Rubin
Randy Wagner

Julie Africk
Amy & Jill Deutsch

Audrey Alberts
Mr. & Mrs. James S. Hogan

Susie Allen & Scott Piebenga
Mary Alltop

Peter Amberson
Mary Joan Lee

Charlotte Anderson
Jillian Haman

Jasmine Anderson
Eton N. Anderson

Elizabeth Angst
Gerald Angst

Anshe Emet Synagogue
Mr. & Mrs. Avner Porat

**Janet Antos &
Dr. Matthew Sorenson**
Patrick James Hogan

Barbara & John Baran
*Ruth Krugly &
Mr. Darryl R. Davidson*

David Baumgartner
Amanda Zoe Yamate

Jay Beder
Daniel Beder

Michael Behrens
*Mr. & Mrs. Jackson D.
Sturgeon*

Tom Behrens
*Jo-Ellyn Dorsey &
Tom Swanson*
Elizabeth L. Raiman

**Being part of the
Burgess Seder**
Marga Levy

Susan Bennett
Susan & William Bennett

Dave & Nicole Berger
Robert M. Berger
Mr. & Mrs. Barry E. Morgen
*Debra Pogrund Stark &
Jessica M. Choplin*

Diane Bilyeu
Sara Johnson

Mary Thelma Black
John W. Thompson, Jr.

LaCountess Blaney
Kenneth V. Hartfield

Barbara Bolsen
Mr. & Mrs. Don DeBat
Tom & Nancy Hanson
Serena L. Moy
Mary O'Connell
Mr. & Mrs. A. Robert Taylor

Craig Bomgaars
Elissa Gong
Carolyn Kasel
Robert Wilson

Bonnie
Otis Watson Hoehl
Brian Murphy

Michael Borromeo
Mr. & Mrs. Antony Chen

Nikki Brainerd
Lee Wherry Brainerd

Brenna & Lisa
Marion Flynn

Noreen Brennan
Fred Millard

Bryn Mawr Community Church
Kenyetta Jackson

BTS & ARMY
Kayleigh Davis

BYOFG - Logan Arcade
Kenneth J. Pettigrew

Kathleen Cahill & Karen Corbin
Donna Davis & Jeff Cash

Russ & Suzanne Campion
Joe Krouse

Cann Family
Anne & Matt Bullard

Nancy Carlson
Mr. & Mrs. David Warner

Bob Carson
Mr. & Mrs. Edward R. Haben
Mr. & Mrs. Thomas Sampson

Bob & Maureen Carson
Mr. & Mrs. Timothy Buzard

Russ Casper
Dyhan Slaughter

Joyce Cohen
Lisa A. Goldberg &
Michael P. Cohen

Rabbi Menachem Cohen
Paula Cohen

Susan Collins
Rev. Mabel L. Rice

Jack, Jim, & Bob Connelly
Mr. & Mrs. Thomas E. Kearney

Merle Cooper
Tyra & Nick Notorangelo
Mr. & Mrs. Dennis B. Propp

Gloria Cox
Bruce Cox

Marybeth Cremin
Margaret M. Cremin

Patrice Dalianis
Tina L. Wright-Charcek

Dave, John & Matthew
Jacqueline C. Hayes

David, John & Mirella
Jacqueline C. Hayes

Dave, John, Mirella & Bethany
Jacqueline C. Hayes

Khari Davis
Nate Love

Eva Dawson
Angel Dawson

Dennis Day
Margaret Schneider

Anna & Phil Debush
Peggy S. Bradley

Lloyd DeGrane
Anne Boyle
Claire Parins

Hanna Denlinger
Wayne Denlinger

Kaitlin Donnelly
Ariela Migdal & Ethan Tucker

Paula Douglas
Nathaniel Douglas

Downtown cat lady
Sarah Bylander Montzka

Alex & Maria Dyzenhaus
Rabbi David & Rebecca Russo

Barb & Bob Edmunds
Peter Gubbe
Marianne E. Lombard-Koy

Barbara Edmunds
Peter Gubbe

Robert Michael Edmunds
Marianne E. Lombard-Koy

James J. & Marilyn G. Ellis
Mr. & Mrs. Robert Emmet Ellis

Di Erickson
James A. Erickson

Janine Esser
Missy Fleming

Ethan
Kenya Blackstone

Liz Farris & Tim Meyers
James Armstrong
George A. Ksander
Karen L. Verdonck

Evan Felice
Bobbie Nunez

Duane Feurer
Jean Feurer

Gail Fisher
Marilyn Victor

Owen Fisher
Josiah Hartman

Dana Floberg
Haley Waud

Judy Freebus
Suzanne Hawley

Evelyn Friedman
Mr. & Mrs. Sidney M. Friedman

Regan Friedmanns
Robert A. Judelson

Jean Fujiu
Susan Fujiu

Kiyo Fujiu
Susan Fujiu
Mr. & Mrs. David Haebich

Melissa & Bryan Galli
Rita M. Hamann

Phil Gardner
Daniel Brown
Jordan L. Coleman
Brian Mangin
Karl Vogel

Anna Gartner
Amy Downey

Matt Geerling
Mike & Sue Geerling

Paul Gekas
Christopher Gekas

Adrienne Gilg
Lawrence Gilg

Nancy Ging
Mr. & Mrs. Paul J. Schultz

Linda Golde
Thomas P. Magnus

Ruby Golding
Josiah Hartman

Ginny Sykes Goldsmith
Mr. & Mrs. Ronald J. Hand

Anne & Bill Goldstein
Barbara & David Abrams
Mr. & Mrs. Norman Bobins
Mr. & Mrs. George J. Tamaro

Bill Goldstein
James L. Alexander
Mr. & Mrs. Robert S. Blatt
Mr. & Mrs. Marcel Frenkel
Maureen M. Glassberg
Mr. & Mrs. Robert Silver

Daina Graves
Alexander Aivars

Annie Green
Katie Green

Loyanna Grierson
Dyhan Slaughter

Katie Grobmyer & Mike Toleman
Elizabeth Pirrie

Gregory Gross
Elisa Gatz
Sharon Gernady

Rev. April Gutierrez
Judith A. Koptik
Rev. Alka Lyall
Marlene Morton
Raymond F. Person

Isaac Gross
Josiah Hartman

James & Brenda Grusecki
Bridget Somine

Ezra Gussin
Josiah Hartman

Luke Haller
Dyhan Slaughter

Paul Hamann
Janet Neiman

Carr Harkrader
Daniel Turton

Amelia Harris
Blythe & David Mendelson

Harris Family
Susanne K. Glink

Kelly Hayes
Naomi Baruch
Maureen Foody

Erwin Heller
Paul Bennett

Melissa Hemzacek
Angela Gallegos

Richard & Karen Herman
Mr. & Mrs. Arnold J. Dahm

Andy Hixson
Peter Colvonen

Blair & Lisa Holmes
Barbara Rogers

Sue Holtzman & David Joel
Alisa Wellek

Pastors Caleb Hong & Caitlyn Butler
Sue C. Eade

Cecilia Horan
Marion Volini Moore

Margaret Croft Jackson
Melissa Moore

Ari Jacobson
Josiah Hartman

Mr. & Mrs. Keith R. Jans
Mr. & Mrs. James S. Hogan

Penny Johnson
Mr. & Mrs. Paul J. Schultz

Amanda & Ashley Jones
Theresa & Kevin Harper

JR & Sam
Jan P. Martin

Jude & Teagan
Janalee Blair

Paula Kahn
Janine Landow-Esser & Jeffrey L. Esser

Noa Karidi
Josiah Hartman

Rev. Charlie Kast
Thomas A. Denio & Laura K. McKee

Nate Kelp-Lenane
Claudia Kelp-Lenane

Jim King
Margaret Frisbie & Matthew Binns

Britley Klopfer
Karen Fine

Rev. Jesse Knox
Mr. & Mrs. Theodore W. Leecesne, Jr.

Colette Kopon
Marion Volini Moore

Eleni Kouimelis
Dyhan Slaughter

Carl Kunda
Kenneth Kunda

Krista Kutz
Juliet Muccillo & Matthew Pollack

Isaac Larkin
Alida Miranda-Wolff

Jeff Larson
Andreason L. Brown

Robert & Sarah Lau
David C. Wilkinson

Fr. Joe Le
Mr. & Mrs. Stephan Strecker

Meira Lieberman
*Joan L. Brunwasser
Sarah-Bess Dworin
Lynda & Arthur Rosenson
Shira Schwartz
Rebecca Willis*

David Lintner
Amy Frayer

Jo Ann Lopes
Frances A. Smith

Caroline Magnesen
Jacob Matthew Rosenblum

Erin Malloy
Mr. & Mrs. Frank Baltrusaitis

Chuck Malm
Harriet Malinowski

Maria Marek
Dyhan Slaughter

Markham Official Court Reporters
Sandra Middleton

Carolyn Masterton
Ingrid Masterton

Alice Matsushima
Marjorie L. Mueller

Jonathan Mayo
Brian Ragsdale

Valerie Radek McGee
Sharon M. Hady

Athena Diana McKanna & Malia Scout McKanna
Pasquale Perrone

Michael McMahan
Cathleen Stark

Terry McMahon
*Cassandra Asher
Mr. & Mrs. Geoffrey Lee Asher
Elaine Bucklo
Barbara & Mike Gilbert-Koplow
James A. Heneghan
Christine & Lance Holwell
Maureen O'Donnell & Jim Spencer
Jeffrey Patterson
Pam Piane & Calvin Bower
Christy Prassas
Zachary J. Redden
Lois P. Scheurer
Agnis I. Schwietert
William W. Shaw
Michael A. Tyllas*

Alix Menna
Josiah Hartman

Roger Metternich
Jo Ann Metternich



Mr. & Mrs. John P. Metzger
Mr. & Mrs. James S. Hogan

Pastor Milton
Richard Simmons

Bethany Moore
Mr. & Mrs. James A. Moore

Morr Family
Dianne C. Morr

Morris
Dyhan Slaughter

Muhammad
Bilal Mujahid

Lena & David Munzer
Patrick Munzer

George Myers
Ann M. Soutter

Fahlyn Myrie
Xavier Snowman

Caroline Nash
Katherine Margaret Marshall

Ethan Nelson
Theresa & Joseph Hus

Steve Nelson
Nikko Blum

Drew Nixon
Amanda Brewer
Debbie Nixon

**Jordan Noble &
Michael Searfoss**
Michelle Davister
Colleen Everett
Justin Ladd & Tim Hart
Sherri R. Ladd
Katy Pyne

Rev. Richard E. Nye
Mr. & Mrs. Hadley C. Pihl

Mabel O'Donnell
Karen Mardy

Julie O'Hern
Frances M. O'Hern

Sarah & Robert O'Keefe
Bridget O'Keefe

Carol O'Leary
Pam Munley

David Ortman
Trudy Ortman

Joan Palmer
Bowen Keefe

Bill Parod
Sereana Parod

Burke Patten
Kathryn & John Patten

Jeffrey B. Patterson
Mary Watson

Molly Paul
Matthew A. Paul

Abigail Paulsen
Mr. & Mrs. Jeffrey Paulsen

Robert & Dolores Paustian
Glenn R. Paustian

Clark Pellett & Robert Kohl
Mr. & Mrs. William A. Goldstein

Kristen Cawley Pelzer
Owen Pelzer

Barbara Perkaus
Carol F. Reed

**Scott Piebenga &
Susie Allen**
Rachel & Jordan Crawford

Celia Pincus
Josiah Hartman

Nicholas Pittman
Joelle Marqua

Ann Platzer
Mr. & Mrs. John J. Berwanger
Benjamin Heriaud

Alicia Pond
Mr. & Mrs. Randy Barba
Mr. & Mrs. Frank B. Chauner
Mitch Cobey & Ms. Janet Reali
Britt Cosgrove
Dr. & Mrs. Delos M. Cosgrove
Jill & Brad Gordon
Mr. & Mrs. Stuart J. Hertzberg
Mr. & Mrs. Richard Jay
*Mark A. Johnson &
Ms. Judith Wright*
Mr. & Mrs. Louis Lanwermeyer
*Mr. & Mrs. Christopher V.
Martinez*
Janet Carl Smith & Mel Smith
Lyndsay Pond White

Alicia & Peter Pond
Mr. & Mrs. Gary Boostrom
Tina M. Erickson & Mike Krutsch
Carol Frank
Peggy & Mark Goldberg
Mr. & Mrs. Stuart J. Hertzberg
Mr. & Mrs. Robert Zaideman

Christy Prassas
Tina M. Erickson & Mike Krutsch
Carol & Ben Mackoff
Glori Rosenson

Jackie Rassner
Dana Sussman Johnson

Mary Hutchings Reed
Jan Feldman

Dr. & Mrs. William Reed
Mr. & Mrs. David Scott Reed

Austin Reichardt
Brynn & Daniel Reichardt

Paul & Jean Rieger
Javier Toubes Vilarino

Dana & Jacob Ringer
Lois Scott & David R. May

Sam Ritchey
Jane A. Juett

Zach Robert
Dyhan Slaughter

Nancy & Alan Rooks
Bonnie Cohen

Carole & Barry Rosenberg
Gail Shiner

Sami Ross
Elizabeth Klein

David Roth
Kenyetta Jackson

Jan Gross Rotter
Sheri & Sherwin Zuckerman

Wynn & Calla Rowland
Becky & Camm Rowland

Ruby & Lucy
Tracey L. Nass

Allan Ruter
Mr. & Mrs. Marshall C. Mussay
Mr. & Mrs. Thomas Sampson

**Ryan, Emily, Tryg, Tait, Seth,
Kayci, Courtney, & Anya**
Susan & Steve Adams

Rev. Greg Sabetta
Alan Hommerding

Mory Sanderson
Laura & Chia Tze

Sandy & Leigh
Mr. & Mrs. Richard P. Markiewicz

Mary Sanko
Marcia Lee

Molly Schechter
Ellen J. Alexander

Char Schoenbach
Charles W. Suda



David E. Scholl
*James D. Alt &
Deborah K. McKnight*

Diane Schulte
Dixie Lee Downes

**Billy Schwartz &
Jillian Foley**
*Sandra M. Rocks
Hannah Schwartz*

Daniel J. Schwartz
David Y. Schwartz

Stephanie Sebor
Dyhan Slaughter

**Stanley Selinger &
Marcia Fields**
Mr. & Mrs. Stuart J. Hertzberg

Colin Senuta
Karen Neuroth

Senuta Family
Karen Neuroth

Meir Sered
Susan E. Cohen

Andrew & Jessica Sheaffer
Carol R. Vieth

Eric Shinabarger
Dyhan Slaughter

Nathan Siddoway
Bernard D. Santarsiero

Rabbi Michael Siegel
Mr. & Mrs. Gary Porton

Benita Sinnarajah
John J. Natalini

Dyhan Slaughter
*R. Cabell Morris
Sam Trimbach*

**Erin, Ira, Andria, &
Isaac Slomski-Pritz**
*Neil A. Pritz &
Kathleen M. Slomski*

Stephen Smoot
*Diana Felice
Jeanne Scherkenbach*

Ann Soutter
George Myers

Ella Spencer
Jackie Spencer

Laura Statesir
Mr. & Mrs. Mark Statesir

Timothy Staudt
Mr. & Mrs. John S. Staudt

Barbara Stoltz
John B. Stoltz

Len Straugh
Thomas J. Duffy

Lila & Celia Sturges
*Rebecca Balyasny
Karen Cooper
Laura DuFour
Elaine Eun
Everett Farrell
Kellie Fitzgerald
Nicole Friedman
Melek Kot
Joshua Liss
Robert Neil Lopatin
Jillian Gutman Mann
Claire B. Millet
Izabel Olson
Samantha Patinkin
Abigail Prinn
Amy Rifkin
Katherine Tkach
Allison Williams
Rebecca Zemans*

Eric Shinabarger
Dyhan Slaughter

Nathan Siddoway
Bernard D. Santarsiero

Rabbi Michael Siegel
Mr. & Mrs. Gary Porton

Benita Sinnarajah
John J. Natalini

Dyhan Slaughter
*R. Cabell Morris
Sam Trimbach*

Kate Sweitzer
Josiah Hartman

Sydney's Bat Mitzvah
Kate Grossman

**Tod Tappert &
Jack Gallagher**
Susan Riordan

Susan Termini
Miranda Pava

Mara Terras, MD
Alexander Terras

Richard Terrell
Christopher William Duquette

The grandchildren's graduation
Arlene Pass

The Night Ministry Staff
Barbara & John Baran

The Nurses & Program Staff
Rev. Tom Behrens

**The people brave enough to
survive on the streets despite
everything thrown their way**
Robert Wheatley

The Residents of the Crib
Peggy T. Nasti

The Urban Gateways Staff
John W. Adams

**The Weisenbergs, Mulvihills,
DePierros, & Goldmans**
Elliot S. Weisenberg

Dennis Thorn
*Brodsky Family
Guy Bucciferro
Ruth S. Hosek
Gail Shiner
Mary Kay & Stephen Wysham*

Those forgotten
Ana Litchfield

**Those just trying to make
their way**
Jan Janes

**Ralitzza Todorova &
Adam Hoffman**
*Peter Behr
Madeleine Burton
Judith Hoffman
Michiel Knoers
David H. Pollack
Mr. & Mrs. Gary Porton
Mr. & Mrs. John Shular
Joel Sugar*

Sam Trimbach
Dyhan Slaughter

Jon True
Genevieve True

Howard Tullman
Mr. & Mrs. Gary Porton

Daryl & Jacqueline Tweeton
Jennifer Tveiten Rifman

Vivika Walter
Julie Walter

Denise Voskuil-Marre
Kristen Voskuil

Jean Walbridge
Laura Cuzzillo

Matt Walker
Dyhan Slaughter

Annie Wallis
Jenni Wallis

Ona Wang
Bridget Becker

We Are Mammoth & Kin
Mr. & Mrs. Craig N. Bryant

Jarrold Welch
Jennifer Lim

Biz Wells
Charlotte Wojdan

Sadie Wener
Rachel Warach

Tamar Westphal
Deborah Spitz & Tamar Westphal

Tom Whitehead
Jenni Wallis

Georgia Wolff
Allison Aubin

David Wywialowski
*Helen C. Pavia
Jim & Eva M. Schuchardt*

Yom Kippur
Sarah Palmer

Your brother
Linda M. Halka

Your clients
John E. Fitch III

Your mom
Nick Reynolds

Your parents
Mr. & Mrs. Joseph W. Zurawski

Your wedding
Rick & Cindy McCallister

Beverly Yusim
Marion Gladstein

Camilla Zecker
Steven G. Zecker

Shelley Ziacik
*Holly Amatangelo
Jill & Mike Folan*

Lindsay Zimmerman
Rochelle & David Jones

IN MEMORY OF

(honoree's name in bold, donor's name in italics)

All lost souls

Kathleen A. Mannix

All the homeless who have passed

Susan Helene Couture

Craig Altman

Craig Ronald Altman

Andre

Barbara T. Piegat

Greg Balk

Garrick Balk

James Bandel

Edward J. Buzinski

Vivian Bantner

Joan Morrison

Florence & Lorence Bartelt

Garry A. Bartelt

David Nachum Baruch matching gift from MassDevelopment

Naomi Baruch

Richard M. Basch

Miriam Basch Scott

Paul Bauerlein

Mary Joan Lee

Becky

Daryllynn Kaspar

Dan Bednarz

Jeanne Winsted Rosser

Michael A. Tyllas

John Belcaster

Eileen A. Abbatacola

Helen Benevic

Helen M. Camasto

Homer Benson

Janice L. Benson & Barry Mizock

Max Binz

Margot Stern

Annetta Blanch

Deborah E. Davis

James & Gale Blocki

William G. Blocki

Anne & Robert Bloom

Leslie Walsh

Shane Bloomberg

Tulia M. Rubero

Bob, Billy, & Margaret

Maryann & Robert Kramer

John A. Brenner

Carol A. Brenner

Brna Family

Carolyn J. Brna

Ada & Clarence Browne

Edith D. Browne

Villa Brunetti

Edward Vladich

Peggy Bryant

Mr. & Mrs. Craig N. Bryant

Michael Burns

Mr. & Mrs. Daniel M. Burns

E. Julian Cabral

Esther Perez

Grace Cabrera

Charlene Linke

Richard Canapary

Ann S. O'Connell

Martin P. Canero, Jr.

Henedina R. Canero

Joseph Cannestra

Sage Bladow

Jules Victor Carter & Marguerite Houston Carter

Mary Louise Carter Rhodes

Bryan Casey

Christa L. Fagan

William Cawley

*Caitlin Marie Cawley
Gerald Cawley*

John R. Cepek

Charlene Cepek

Mary Ann Chasen

Mary Chasen Golosinski

Sr. Bee Jay Ciscek

Sr. Mary Jo Curtsinger

Grant Clark

Colleen P. Garard-Dahlem

Mary Louise Cochran

Deborah E. Davis

Colleen, Howard, Brennan

Mr. & Mrs. Gregory Gromek

Marian Collins

Koret Johnson

Matt Conroy

Mr. & Mrs. Robert Conroy

Phoebe Constantine

Mr. & Mrs. Elio F. Sidan

M. Sue Coughlin

Amanda Zoe Yamate

Philip Crosby

Philip Crosby

Claire Cross

Mr. & Mrs. R. Bruce Johnston

Dave

Elmer A. Mannina

Ruth Dawn

Sylvia C. Newman

Rev. Raymond R. Day

Maryann G. Strain

James R. Donnelley

*William C. Bartholomay
Mr. & Mrs. Warren L. Batts
Greg Brown*

Nina H. Donnelley

Shawn M. Donnelley

Thomas E. Donnelley II

Dennis & Connie Keller

James T. Mauck

Mr. & Mrs. Robert E. McCamant

Elizabeth Platt

Steve & Karla Ritt

Ilana D. Rovner

Mary Kay Ryan

Susan Thompson

Mr. & Mrs. John R. Walter

Richard Duebner

Diana Duebner

Jack Dunn

Timothy A. Lavery

Eddie

Mary Sarkes

Grace Ehrlich

Irwin Ehrlich

Elise

Sylvia A. Mann

James J. Ellis, Sr.

Mr. & Mrs. Robert Emmet Ellis

William G. Ellis

Mr. & Mrs. Robert Emmet Ellis

Jean Engel

Jane Tufts

Steven Erickson

Sandra Ledesma

Susan M. Esparza

Jarrie A. Holt & Peter Hufnagl

William Farber

Tiffany E. Farber

Mary Farenzena

Fredrick Farenzena

Lucas Fariss

Mary Ann Kawczynski

Lt. Eric Ferg

Fay Ferguson

James Finnegan

Mr. & Mrs. Dominic J. Nakis

Tom Finnegan

Dorsi Finnegan

Glenn Fischer

Mary Flanagan

Carla Fisher
Thomas F. Catania

Norman Fishman
Robert A. Judelson

Andy Frame
Mr. & Mrs. Robert R. Frame

Gertrude E. Fredrich
Lois J. Christoffersen

Robby Friedman
Mr. & Mrs. Sidney M. Friedman

Marietta K. Frogge
Mr. & Mrs. James L. Frogge

Howard Galler
Robert A. Judelson

Helen & Ed Galowitch
Susan Janus

Gan & Dom
Julie Haeger

Ray E. Garard
Colleen P. Garard-Dahlem

Sheldon Garber
Joellen P. Garber

Adele & Alex Giambalvo
Ramona T. Giambalvo

Jim Gibbons
Mr. & Mrs. Frank Mathie

Diane Gilfillan
Jennet Tempone

Horvis Gladney
Mildred R. Gladney

Maureen Glassberg
Barbara & David Abrams
Mr. & Mrs. Robert S. Blatt
Muriel & Marvin Glick
Mr. & Mrs. William A. Goldstein

Merrill & Barbara Greenberger
Paul Hamann & Tom Grell
Robert A. Judelson
Mr. & Mrs. Richard Loundy
Audrey Miller
Gregory J. O'Leary
Arlene Pass
Gloria Zieve

Jeanette & Theodore Gorski
Mr. & Mrs. Richard E. Gorski

John J. Griner
Mr. & Mrs. Elio F. Sidan

Kenneth Gust
Susan Malanga

Daniel Guzman
Edwina J. Lamont

Linda Hack
Robert M. Hack

Betty & Bill Hamann
Mr. & Mrs. Bruce Augustine
Mr. & Mrs. Gregg G. Augustine

Fred Hampton
Michael VanElzakker

Robert Hampton
Anne K. Kenny

Charles & Larnie Hansel
Marea R. Stamper

Dan Happ's mother
Lorraine J. Weisz

Governor Hartfield
Kenneth V. Hartfield

Glen Heitschmidt
David Kmetz

Paul Henderson
Tom & Siria Behrens
Jo-Ellyn Dorsey & Tom Swanson
R. Bruce Williams

Donald F. Hetzler
Kurt A. Reichardt

Dr. James A. Hill
Corrine A. Blackman
Kathleen A. Blair
Mr. & Mrs. Robert C. Canapary
Pamela Capraro
Mary Ellen Durbin
Clare & Paul Faherty
Mr. & Mrs. Duane Fimreite
Ellen E. Gorney
Mary J. Gower
Anthony S. Graefe
Lori L. Hansen
Jay Heyman
Karen Hill
Virginia Hill
Amy Hohulin
Margaret Hutchings
Elizabeth M. Jeep
Dolores D. Kennedy
Bernard J. Koczaja
Mr. & Mrs. Casimir J. Kotowski
Monroe Property Management Co.
Patricia B. Montroy
Cathy Mousseau
Sharon O'Brien
Ann S. O'Connell
Robert O'Connor
Kathleen M. Perry
Kim Hesterman Reed
Mr. & Mrs. David Reeter
Elizabeth Schraft
Wendy Sodano
Maria Walther
Mr. & Mrs. Richard K. Winans

Larry & Julia Hipp
Anthony R. Hipp

Virginia Hoelscher
Vicki D. Otis

Wilbur T. Holmes
Tracey Holmes

Hugo
Gail E. Parry & Norman Bell

Carol Christine Ingolia
Janalee Blair

John S. Iwanski
Helen K. Iwanski

Patricia Jablonski
Edward D. Jablonski

Jack & Mil
Elmer A. Mannina

Warren Jinks
Irene Jinks

John
Elaine Frick

Helen Johnson
Laurie House

Leroy Johnson
Francine Anunciacion

Byron D. Jones
Carolyn Ann Kotlarski

Rev. Henry E. Jones
Loretta J. Jones

Lawler, Majella & Michael Joyce
Joseph M. Joyce

Julio, Paige, Carl & Tricia
Becky & Camm Rowland

Mike & Gerti Juzeszyn
Mr. & Mrs. Harold Juzeszyn

Robert Kahl
Janet L. Kahl

David Kahn
Janine Landow-Esser & Jeffrey L. Esser

Ron Kahn's mother
Janine Landow-Esser & Jeffrey L. Esser

Theresa Keilor
Bobbie Nunez

Ezekiel Kelp-Lenane
Claudia Kelp-Lenane

David Kennedy
Barbara Bouie-Scott

Bonnie Kepplinger
Mary Kathryn Black
K. Kristine Cloud
Jean Coleman
Mr. & Mrs. Gregory Gromek
Katy Gross
Donna J. Higgins
Paige C. Lowe
Thomas M. Sekulich
Miranda Pava
Mary T. Walsdorf
Mitch L. Welch
Heather Zabadal

Charles Kierscht
Marion J. Kierscht

Mabel Kobow
Julie Lillquist

Bryan Koehler
Rachel Leiner

Evelyn Krent
Stephanie Krent

Jacob Kunda's mother
Natalie Harris Senne

Bobby Laskero
Robert A. Laskero

The beloved son & brother of Carole & Ken Latimer
Mr. & Mrs. Robert S. Blatt

Peggy Lavelle
Mary Beth Lavelle

Lee
Loretta D. McCarley
Claudia Petrie



Robert Mallek
Josephine A. Mallek

Ida Marie
Lyn Taliaferro

Roy Martin
Mr. & Mrs. Raymond A. Macek

Idell Marver
*Janine Landow-Esser &
Jeffrey L. Esser*

Rebecca Mayer
*Christine Igo &
Marc Cooperman*

Heather McCallister
*Samantha Deleon
Lori Drummond-Cherniwchan
Sarah & Robert Hutchins
Karlene Mostek
Toni Rapach*

John P. McCarthy
Mr. & Mrs. John Conidi

Ernestine McDonald
Katherine Risseeuw

Margaret McLaren
Anne M. Hardy

Helen Meauhead
Helene Meauhead Johnson

John G. Merza
Mr. & Mrs. Elio F. Sidan

Shael David Mesh
Mr. & Mrs. William P. Lyman

Harry Micci
Regina M. Belt

Michael
Janice M. Radosevich

Fred Miles
Roland Price

Elvina Moen
Annie Decker

Mom, Dad, Joe, Jr, Millie
Elizabeth Curylo

Joe Monahan
Mary Monahan

Dr. Wallace D. Moore
Wallace D. Moore

Lorraine & Joe Moran
John Moran

Louise S. Morris
Robert B. Morris

Nathan Mosby
Mr. & Mrs. Cleveland G. Mosby

Linda Ruth Moscow
Robert A. Judelson

Bill & Monica Mulchrone
William J. Mulchrone

Ginny Murray
Kathleen M. Hocking

Nardi & Tom
Mr. & Mrs. Russell Campion

Laurie Neu
*Marguerite O'Hara
Mr. & Mrs. Lawrence Walrath
Gene Wozniak*

Jack O'Connor
Denise F. Ursini

Carol O'Leary
*Sharon Ann Dalbke
Barbara Z. Dick
Monica Feeley
Andrea Gebhart
Nicholas Gebhart
Paula D. Harris
Beth-Charlotte Kovacs
Mr. & Mrs. Brian J. Kovacs, Sr.*

*Betty Lattanzio
Mr. & Mrs. William J.
Macartney
Ms. Cynthia G. May
Renee & Mike McMahon
Linda Ann Miller
Pam Munley
Lisa Phaneuf
Mr. Robert Shanks
Barbara Singer
William Wagner*

Brittney Orlowski
Carol Strasser

Joan Merlin Palmer
*Marianne Joyce
Ann S. Lynch
Jeffrey C. Meaton
David Mehringer
Pamela Mitchell-Byd
Modine Manufacturing
Company*

Kathleen Patterson
Mr. & Mrs. Philip Cappitelli

Roger Patterson
Dorcas Kresl

Ellinor Pedersen
Toni L. Aiello

Elizabeth Peers
Christine Madden

Edward K. Poor III
Mr. & Mrs. E. King Poor

Chris Powers
Mr. & Mrs. Neil A. Bergman

Julius H. Preston III
Dana D. Preston

Jim Proffiti
Richard Simmons

F. W. Quillman
Karen Kessler

Mary Leo
Marilyn K. Trant

Leslie
Barbara A. Campagna

Lawrence Lombardo
Catherine Terry

Timothy Alan Long
Lois Long

Mary Lou
Mr. & Mrs. Douglas Nerge

Helen K. Lutz
Carlene Lutz

Robert Maguire
Madeleine K. Maguire

Joseph Majczan
Julia T. Majczan-Hennein

Bill Raff <i>Deborah & John Lynch</i>	Joel F. Schwartz <i>Julie Schwartz</i>	Holly Stephenson <i>Robert L. Stephenson</i>	Jonathan Tobias <i>Joanne & Kenneth Benson</i>	Phyllis Weiland <i>Stacey Cleveland</i> <i>David Ignoffo</i> <i>Natalie LaRocque</i> <i>Stephanie Lientz</i>
Robert Rasmussen <i>Mr. & Mrs. Jon Rasmussen</i>	Dick Schwermin <i>Sheila H. Schultz</i>	Anne O'Brien Stevens <i>Richard S. Stevens</i>	Emmett & William Trant <i>Marilyn K. Trant</i>	
Reta Reingruber <i>Mr. & Mrs. Robert E. Rospenda</i>	Adele Secor <i>Ramona T. Giambalvo</i>	Michael Stevenson <i>Peggy Callahan</i>	Pastor Walter Trost <i>Earl A. Nienhuis</i>	Leon Welch <i>Karen Kessler</i>
Richard <i>Jean H. Hallen</i>	Jo Sherwood <i>Carlene Lutz</i>	Marion Stickley <i>Denise Janci</i> <i>Elizabeth Smithson</i>	George Tschumakow <i>Alexander Tschumakow</i>	William & Eleanor <i>Margaret T. DeRoss</i>
Alphonia L. Roberts <i>Caroline A. Roberts</i>	Shuli <i>Ann Harris</i>	Barbara Stoltz <i>John B. Stoltz</i>	Turansky & Horn families <i>Barbara J. Turansky</i>	Nina Williams <i>Terri Clemons Clark</i>
David Rosenstein <i>Fern Rosenstein</i>	Jasmine Bright Singh <i>Ranjan Singh</i>	Jeff Strouse <i>Lee Strouse</i> <i>Mr. & Mrs. Daniel J. Wachholz</i>	Tom Unsworth <i>Jean M. Unsworth</i>	Ollie Brown Williams <i>Vanessa A. Williams</i>
Edward (Bunny) Russel <i>Mr. & Mrs. Frank J. La Banca</i>	Edward Skelly <i>Margie L. Skelly</i>	Myra Strubbe <i>Marie J. Galoney</i>	Rosemary Valley <i>Mary R. Valley</i>	Jerome P. Witek <i>Barbara J. Witek</i>
Karn Johnson Rutulante <i>Ann Marie Monson</i>	Jake Smiley <i>Julie Morin</i>	Sloane R. Sullivan <i>Robert Gerald Sullivan</i>	John D. Van Pelt <i>Sharon Marie Quintenz</i> <i>Van Pelt</i>	John Witucke <i>A. Virginia Witucke</i>
Jon Ryding <i>Mr. & Mrs. Raymond Capiz</i>	Rev. Amy Snedeker <i>Carole R. Dizeo</i>	Carolyn Suszek <i>Sandra A. Bootz</i>	Dale Vanderbloomen <i>Kathy Stathos</i>	Matthew Wolf <i>Thomas A. Wolf</i>
Lora Sanberg <i>Laura & Chia Tze</i>	Jean Spinuzza <i>Elizabeth Harris</i>	Louis Tancredi <i>Lorraine B. Tancredi</i>	Franica Vidovic <i>Sandy Alice Vidovic</i>	Mr. Worthington <i>K. Kristine Cloud</i>
Scott Sanderson <i>Sally & Greg Connell</i>	William & Frances Springborn <i>Mr. & Mrs. Paul W. Springborn</i>	Teddy Tarr <i>Rosalie N. Tarr</i>	Manuel & Maria Toubes Vilarino <i>Javier Toubes Vilarino</i>	Eric Wright <i>Mr. & Mrs. Mark P. Kotilinek</i>
Sandy <i>Elmer A. Mannina</i>	Sharon Steinhart <i>Deborah L. Albano</i> <i>Terrie Albano</i> <i>Helene Cole</i> <i>Marena McPherson</i> <i>Shuko Namikawa</i> <i>Dean Radcliffe</i> <i>James Steinhart</i> <i>Maryann Steinhart</i> <i>Tom Steinhart</i> <i>Bob Thom</i> <i>Linda Waters</i> <i>Katherine Wesch</i>	Warren L. Taylor <i>John A. McElroy</i>	Marcella Vitulli <i>Mr. & Mrs. Martin W. Heller</i>	Your aunt <i>Marlene Denz</i>
Susan Scheopp <i>Anne M. Hardy</i>		The victims of 9/11 <i>Sr. Virginia Bruen, OP</i>	Wally <i>Katherine Hagman</i>	Your brother <i>Martha Dwyer</i>
Ward Schmiegl <i>Susan Siebers</i>		Stephen Thomas <i>Mary Alltop</i>	Daniel & Dorothy Watkins <i>Darlene D. Watkins</i>	Your grandmother <i>Terri Clemons Clark</i>
Ruth Gill Schmitz <i>Gregory Padgett</i>		Those who may perish in the upcoming deadly weather <i>Dan Shick</i>	Kim Watkins <i>Barbara Watkins</i>	Your loving parents <i>Jan Janes</i>
Jack W. Schultz <i>Arlene D. Schultz</i>	Garold "Gary" Stenzel <i>Allison Newman</i>			Kathleen Zmuda <i>Heidi & Sam Bailey</i>

INDIVIDUALS

Luminaries

\$25,000+

Anonymous (6)
Mary & Paul Finnegan
Anne & Bill Goldstein
Michael J. Katzenbach
Alicia & Peter Pond
The Estate of Norma Z. Bennett
Mr. & Mrs. William R. Tobey, Jr.
Sandra Vitantonio &
Tilden Cummings, Jr.

Constellations

\$10,000 - \$24,999

Anonymous (4)
David & Nicole Berger
Marti Corcoran
Elizabeth I. Crown & Bill Wallace
Tom & Julie Danilek
Mary & Steve Dik
Dorothy & Richard Harza
Janice L. Honigberg
Stanley L. Iezman/
American Realty Advisors
Melanee J. Jech
Patricia & Dan Jorndt
Jim & Kay Mabie
Linda & Stephen Patton
Betsy & Mike Peska
Denise M. Peterson
Karen & Dick Pigott
The Estate of Dori &
Franz Altschuler
Bob & Kathy Wiesmann

City Lights

\$5,000 - \$9,999

Anonymous (6)
Barbara & John Baran
Dana & Lowell Bostrom
Carolyn & James Brett
Anita & Delos M. Cosgrove
Deborah A. & Alan D. Feldman/
Feldman Family Fund
Mr. & Mrs. Richard Jay

Judelson Family Foundation
Rachel Kaplan &
Robert Riesman
Lawrence Kearns
James & Ozana King
Robert Kohl & Clark Pellett
Adam & Lindsey Labkon
Barbara & James Levie
Harriet & Jim McDonald
William & Cathleen Osborn
Jeffrey Pratt
Diana & Bruce Rauner
Mr. & Mrs. John W. Rowe
Jill & Allan Ruter
Susan & Brad Schulman
Jenny & Nick Semaca
Hope & Jeffrey Sheffield
Matthew D. Smith
Leonard G. Strauch
The Bednarz/McMahon
Family Fund
The Estate of Rosemary
H. Collier
Andrew Thorrens & Don Mizerk
George & Karen Tzanetopoulos
Mr. & Mrs. Frederick H. Waddell
Mark Warren
Eddie & Pamela Williams

Guiding Lights

\$1,000 - \$4,999

Anonymous (55)
Laura Adams
Gordon & Paula Addington
Gina & Mark Affolter
Patrick L. Albano
James L. Alexander
Daniel Alter
Scott & Sue Anderson
Lisa Kay Anderson-Shaw &
Fred Zar
Jen & Ben Applegate
Erin Archer
Ermin Arriola
Diane Austin
Mark F. Baggio

Kenneth S. Balaskovits
Lorraine & Randy Barba
Beth & Chris Barer
Erica & Michael Battin
Willaim Beam
Tom & Siria Behrens
Mr. & Mrs. Everett J. Bell
Susan & William Bennett
Kate & Aaron Berlin
Robert J. Berman
Suzanne Bessette-Smith &
David K. Smith
Beth & Gary Birnbaum
Mr. & Mrs. Harrington Bischof
Ralph & Leslie Bishop
Pat Bitterman
Blackfriars '57
Pamela & Michael Bless
Sue & Jim Blomberg
John P. Blosser
Boehrer Family
Barbara Bolsen
Michael V. Borromeo
Beth & Scott Brady
Noah Brown
Joseph E. Byrd & Helen C. Slade
Virginia Campbell
Russell & Suzanne Campion
Pamella & Al Capitanini
Robert A. & Dr. Maureen
H. Carson
Thomas J. Casey
David & Suzanne Causton
Charleen Cepek
Frank B. Chauner
Linton J. Childs
Sarah & Tzaras Christon
Susan & Edward Ciolkosz
Kristie Clemons & James Markich
Sharon Cole
Combined Federal Campaign
Kathleen & Michael Conway
Brian & Margaret Cook
Rita T. Cooper
John P. Corvino
John Costello

Beth A. Coughlin &
David D. Wang
Marybeth N. Cremin at
Morgan Stanley
Amanda Crowley & Nick Conway
Kristi Dahm & Brian Herman
The Davenports
Cara DeGraff
Joan & Michael Diggs
Marisa & Robert Doherty
Michael & Diane Dolesh
Lexie & Louis Dore
Natalie & Milan Dotlich
Anne-Marie Douglas
Theresa & Basil Doyle
Stephen C. Duck
Art J. Duncan
William & Kelly Eavenson
Maria Edstrom & Robert O. Kosar
Kerry A. Egan
Melanie D. Ehrhart
David Ellis
Tina M. Erickson & Mike Krutsch
Randall Fearnow &
Beth A. Compton
Sharon Feigon & Steven Bialer
Dana & Dan Floberg
Janet Fortina
George Francis
John & Nancy Furr
Barbara Jean Geist-Deckert
Amy George & Ken Aldridge
Vinith George
Nicholas L. Giampietro
William J. Gibbons
Christopher L. Gillock
Rebecca C. Gilman &
Charles Harmon
Jonathan Golden &
Tatiana Kleiman
Carol & David Golder
Jill R. Gordon
Alan & Carol Greene
Dr. Andrew Griffin &
Ms. Moira Collins
Veronica Griffith

Brenda & James Grusecki
Chand Gupta & Danielle Rosen
Alexander Gutfraind
Alison & Thomas Hafner
John & Dana Hagenah
Paul W. Hamann
Rita M. Hamann
John Harris
Mark A. Harris
Nancy & John Hartung
Alan Hauser
Leon Heller
Kate Hemmingsen/Naponelli
Family Giving Fund
W. Christian Hinrichs
Aaron & Carol Hogan
Mr. & Mrs. James S. Hogan
Patrick James Hogan
Karen T. Horan
Suzanne J. Hoyes
Kevin R. Hyland
Norman Jeddelloh
Randee Jemc
Carol B. Johnson
Koret Johnson
Mark A. Johnson
Michael & Marion Johnson
Sharon M. Johnson
Laura & Eric Jordahl
Laurel & Irvin Kaage III
Jill & Michael Kaiser
Maria & Joern Kallmeyer
Liz & Steve Kendall
Marion J. Kierscht
Katie & Dan Kish
Deborah & Robert Klipp
Ellen L. Kollmann
James & Celeste Kramer/James
Kramer Family Charitable Fund
Susan & Andrew Kramer
Ruth Krugly & Darryl R. Davidson
Marilyn Labkon
Bill & Blair Lawlor
Mrs. Frederick R. Lent
Kim & Jim Lifton
Mike Linder

Michele & David Lommel
Laura Lukehart
Dana Lunberry
Anne & Thomas Lysaught
Lai-Ming Ma
Kilby & William Macfadden
James Madden
Dan Maloney & Rick Sherwood
David R. May & Lois Scott
Ted & Almeda Maynard
John F. McCartney
Laurie B. McCollum &
Carl W. Warschausky
JoAnn Metternich
Georgiana Nicholas
Mark P. Miller
Catherine & Leo Miserendino
David & Laura Mohr
Mary & John Mooney
Ed & Marcia Moore
Sandra L. Mueller
Maryrose T. Murphy
Annie & Scott Mygind
Elizabeth Nesi
Ellen C. Newcomer
Sandra K. Newman
Mark Niemczyk
James & Beverly O'Connor
Margaret O'Connor
Frances M. O'Hern
Agnes & Rich Olejniczak
Dave Ortman
Holly Ost
June Maguire Ozmon
Arthur Palmer & Pamela Gellen
Ellen L. Partridge
Deborah & Rick Paskin
Darla Angst Patterson
Thomas Peppard
Hyde & Ann Perce
Barbara & Robert P. Perkaus, Jr.
Henry H. Perritt, Jr.
Kurt T. Peters &
Elizabeth Hopp-Peters
Lauren Piecuch
Thomas W. Planek
Joseph Podwika
Mike Polz
Joel & Trisha Pomerenk
Jay Porter

Stephen T. Pratt
Dennis & Phyllis Propp
Angela & Michael Quattrochi
Janet Reali & Mitchell Cobey
Mary Hutchings Reed &
Dr. William R. Reed
Corrine Reichert/
Reichert Foundation
Anthony P. Richards
Mr. & Mrs. David W. Riddell
Norman L. Riley
David Rittof & Tim Bruhn
Robin & Peter Roberts
Jono & Piper Rothschild
Laura & Andrew Running
Christina & Brandon Salesberry
John Salvino
Douglas Schuberth
Kandis Scott
Michele A. Semisch
Margaret Shaklee &
Hillis Howie, Jr.
Thomas & Nancy Sharp
Patricia Shaw
Timothy C. Sherck
Willard L. Shonfeld/The Joseph
Perlman Family Foundation
Debbie & Bernie Simon
Elizabeth M. Simpkin &
David L. Wetherbee
Dyhan Slaughter
Mary Ann Smith
Kathy & Brian Spear
Marea R. Stamper
Sylvia V. Stec
Anne Stern
Lee Strouse
Balakrishna & Rama Sundar
Dr. Mary-Morag Sutherland
Sven & Julie Sykes
Pam & Tim Szerlong
Rosemary & George Tamaro
Tod Tappert & John Gallagher
Helen & Dick Thomas
Jarret Thompson &
Brian Mustanski
Dennis W. Thorn & Jianghong Li
Thomas Thuerer
Philip Tibitoski
Sharon Tiknis

John Tillman
Ted Tomaras
Marianne Tralewski &
Harry Dennis
George & Laurel Trimarco
Jon Trowbridge &
Kathryn Sarah Devine
Donna Tuke
John & Bernice Tulloch
Henry & Janet Underwood
Bryan J. Vanderhoof
Julie Walton
Jackie & Steve Wasko
Bronna Wasserman
Pamela & David Waud
Carrie & Kenneth Jay Weaver
Lesley Weir & Scott R. Swan
Elliot S. Weisenberg
Wilma E. Wendt
Charlotte Whitley & Lee Lohman
Lisa & David Wilcoxon
Joann & David Winston
Jane A. Wolfe
Michael & Mary Woolever
Delphina Worsley
Shelley Ziack
Dr. Lawrence &
Judith Zimmerman
Andrew J. Zych

Streetlights

\$500 - \$999

Anonymous (51)
Barry Alberts
Daniel T. Amorella
Libby Angst
Gerald Angst
Jonathan D. Appelbaum
Lucy & Peter Ascoli
Erin & Mawi Asgedom
Mark Atkins
Geoffrey Baer
Michael Baran
Robert A. Barba
Jack & Beth Barnett
Craig Beardsley
Andreas Bell
Perla M. Benrubi
Janice L. Benson

Joan I. Berger
Ed Bergstrom & Analese Teng
Lieselotte N. Betterman
Jeffrey H. Binstein/
Binstein Family Foundation
Dana & Evan Birnbaum
D. Steven Bishop
Doris Bland & Gabe Dugas
Arleen & Robert Blatt
Lesley & Spencer Bloch
Dan & Louise Bockelmann
Nancy Pond Boostrom
Frank J. Bornhofen
Maarten Bosland
Kiantae A. Bowles
Mary Brandon
Robert & Tassie Brautigam
Matthew Brett & Emily Monnelly
Giovanna & Joseph Breu
Patricia & Otis Bridges
Erwin F. Brinkmann
Emily & Jon Bristol
Greg Brown
Edith D. Browne/Clinical
System Specialists, Inc.
Harry Bryant
Patricia & Daniel Buelow
Dorothy I. Bulterma
Charles A. Burbridge &
Deborah Gillespie
Frank Butler
Sandra & Tim Buzard
Kathleen & John Bychowski
Donna L. Callahan &
Martin J. Fitzgerald
Charles P. Carey
Helen Cejtin & Fred Rosen
Joanna & Anthony Chen
Costas Christ
Shevlin J. Ciral
Mr. & Mrs. Lawrence H. Clennon
Cecelia Coffey
Erin & Michael Cole
John Cole
Ronald & Carol Cole
Robbie Collins
Eileen Conagan
Merle R. Cooper
Mary Corrigan
Bruce Cox

Rebecca Cox
Raymond C. Coyle &
Geraldyn M. Fallon
Amy & Samuel Crider
Mini Datta
James Davissou
Frederick T. Dearborn
Josh DeGraff
Robert Delaney
Abel P. Del Toral
Sarah Demet
Liz Dengel & Mark Buettner
Margaret Dewar
Dan Donoghue
Carolyn Doughty
Jane & Chuck Dowding
Nancie Dunn
Sean D. Egan
Traci & Scott Eisner
Marion Evans
Eric Evenskaas
Rebecca Feaster
Patti & Jerry Fellows
Terry & Barbara Ferrari
Michael & Elizabeth Fieweger
Karis Findlan
John E. Fitch
Drs. Christine M. &
Peter R. Fletcher
Megan Flood
Norma J. Flynn
Mark A. Fraser
Susan Fried
Daniel & Roxane Friedman
Sarah Gajek
Beth & Daniel Galovich
Sarah E. Generes
Meredith C. George
Daniel L. Gerding
Ellen & Paul Gignilliat
Terry S. Gillespie
Angie I. Gomez
Phillip Gordon
Robert Gordon &
Sophie Haroutunian-Gordon
Susan & Bruce Gottschall
Linsley S. Gray
Kenneth Green & Holly Wathan
Daniel L. Greiwe &
Phyllis C. Myers

Thomas A. Grell
 Erin L. Grodnick
 Edward & Mary Kay Haben
 Karen Jhain Hafstrom
 Claire Halpin
 Jillian Haman
 William A. Hancox
 Kelly Hansen
 Eric Hassel
 Yvonne Herlihey
 Dorrit E. Herreid
 Carrie Hewitt & Adam Shils
 Edie & Mark Hickman
 Judith M. Honesty
 Jane Trueheart Huels
 Pamela K. Hull
 Beth & Darren Hunter
 Sarah & Robert Hutchins
 John & Lisa Iberle
 Catherine & Eric Jacobson
 Susan Janus
 Rick & Mary Jobski

Cynthia A. Johnston &
 William M. Kiolbassa
 Mr. & Mrs. Gregory Kaczmarek
 Andrew Kamos
 Julia P. Karagianis
 Christie A. Keenan
 Mary & Dennis Kelly
 Claudia Kelp-Lenane
 Edward J. Kennedy
 Ann E. Kerbs
 Mark Kiefhaber
 Nancy Kim
 Mr. & Mrs. John A. Kinahan
 Amanda & Ben Kleinman
 Kendra Knight
 Amor Kohli
 Heidi Kruck
 Leslie Kuhagen
 Sue & Joe Kunzer
 Mary Beth Kurzak
 Stuart Lange
 Leah M. Laurie

Hyong Lee
 Matthew Lehman
 Marcia & Joe Liss
 Janice Liten & Mike Schnur
 Meg & Tom Macfadden
 David Mackler
 Carol & Ben Mackoff
 Sylvia J. Maconaghy
 Kathleen & Joseph C. Madden
 Miranda & Jed Mandel
 Elmer A. Mannina
 Margaret A. Marek
 Annamae Calkins Martinez
 Mr. & Mrs. Christopher V.
 Martinez
 Susanne Mathewson
 Thomas & Lorraine Mazza
 Danny & Nikki McBride
 James P. McCaffrey
 Margaret & Robert McCamant
 Kay W. McCurdy
 Leslie & David McGranahan

Mimi McKay
 Jane C. McLagan
 Marcelle McVay &
 Dennis Zacek
 Suzanne Mizgata
 Ryan Mohr
 Kimberly & Michael Moran
 Gabriel Moreno
 Rosalyn & Barry Morgen
 R. Cabell Morris
 Gregg & Betty Morton
 Barbara Mousigian
 Joan C. Mudd
 Pat & Jim Nack
 Kathleen & Dominic Nakis
 Nancy Needles
 Emmanuel Nony
 Stephen & Deborah O'Connor
 Marguerite O'Hara
 Amy E. Pagliarella
 Lance Park
 Gail E. Parry & Norman Bell
 Martha & Jeffrey Pattee
 Jane Sisco Perkins &
 Jim Perkins
 Martin Perry &
 Barbara Williams
 E. Scott Peterson &
 Judith M. Desenis
 Jessica Petty & Ethan Smith
 Bernadine & Edward Pillar
 Michael & Joan Pine
 Katherine Prizy
 Sam & Barbara Psimoulis
 Jacqueline L. Quern
 Thomas F. Reagan
 Claire Rice
 Grant Riedesel & Laura Ferrell
 Jennifer Tveiten Rifman
 Virginia Robinson &
 Emile Karafiol
 Michael Rosenbaum
 Linda & John Rossi
 Mary & James Ruff
 Sandra & Earl Rusnak
 Erin Ryan & Ryan Spangler
 Kathleen M. Ryan
 Sue & Jeff Ryan
 Anita & Anthony Saineghi
 Bonnie & Thomas Sampson

Chris Santiago
 Leanne Sardiga &
 Chris Schluter
 Jennifer & Stephen Schaefer
 John Schneider
 Wesley E. Scroggins
 Roshan Shankar
 Kevin Sido
 Linda Sienkiewicz
 Robert & Sandra Silver
 Arlie Sims
 Suzanne T. Smart
 Fred B. Smith
 Janet Carl Smith & Mel Smith
 Deborah & John Sobel
 Frank H. Sommerfeld
 Michael & Antje Spade
 Darolyn & Robert Spannuth
 Faith H. Spencer & Mark Parts
 Deborah Spitz &
 Tamar Westphal
 Moira & Mitchell Staggs
 Debra L. Stetter
 Christian Strehle &
 Laurie Paul
 Timothy J. Sullivan
 Kay & Cindy Surowiak
 Lara Suvada
 Stacey & Christopher Taylor
 Dee & Ronald Tevonian
 James F. Thaxton
 David Tucker
 Samantha Tucker-Boyer
 Blake Twisselman
 John & Virginia Ulaszek
 Nneka Umeh &
 Griffin Moshier
 Scott J. Vachon
 Lauren Wagner
 Louise Wallace
 John & Carol Walter
 Donna & Ronald Webster
 Charity & Lawrence Widrig
 Lance Wilkening
 Dick & Liz Wilmes
 Thomas R. Witt
 Howard & Iris Wittenberg
 Susan & Stephen Wolfe
 Jami Wong
 H. Edward Wynn



LONG TIME FRIENDS *(First Gift Before 7/1/2004 and Last Gift After 7/1/2018)*

Anonymous (187)
Gordon & Paula Addington
Toni L. Aiello
Barbara & Kenneth Alexander
James & Gretchen Allen
Saverio & Judy Alonzi
Jill Althage
John V. Amato
Geoffrey A. Anderson/
The Ruth and Roger
Anderson Family Foundation
David A. Arnold
Lucy & Peter Ascoli
Garold & Petrine Ashley
Theodore & Barbara Asner
Carol & Franklin Augustine
Glen Bacus
Catherine Baker
Pamela R. Baker
Barbara R. Balkin
Melanie & John Balzer
H. Russell Barefield &
Robert A. Mahoney
David Barford
Jack & Beth Barnett
Ruth E. Barrios
Lynda M. Bartlett
Walter Baumann
E. Carol Beck
Tom & Siria Behrens
Ann Beland
Larry R. Belcaster
Susan & William Bennett
Gary & Mary Berens
David & Nicole Berger
Gail Bernoff
James M. & Jean K. Berry
Tom & Mary Biesty
Victoria Lee Bigelow
D. Steven Bishop
Timuel D. Black
John & Donna Bloniarz
Richard R. Blough
Julian M. Blumenthal
Timothy & Linda Bogan
Beverly Bojanowski
Albert H. Bolger

Barbara Bolsen
Dan & Andrea Bonkowski
Steven & Ifaat Bosse
Richard Bough &
David Easterbrook
Wayne & Karen Boyles
Thomas E. Boynton
Peggy Bradley
Nancy Bradney &
Sam Peltzman
James & Nancy Brandt
Mark Breen &
Sara A. Stevenson
Laura & Kenneth Bricchetto
Aaron D. Brodsky
Mark & Pamela Brooks
Larry M. Brown
Rita Buczynska
Helen Bukowski
Maree G. Bullock/
The Alford Group
Charles A. Burbridge &
Deborah Gillespie
Carl & Mary Busch
Frank Butler
Shirley A. Calahan/
Calahan Funeral Home
Kimberly J. Calandra
Robert & Jane Calvin
Leonard Canino
Roy W. Carlson
David & Julia Carpentier
Joseph & Joanne Carroll
Thaddeus Cellak
Ronald P. Centanni
Charleen Cepek
J. Harley & Jean B. Chapman
Frank B. Chauner
Kathleen Cheevers
Myron Cherry
Elaine & Douglas Chester
Nancy & Dudley Childress
Gary R. Chipman
Lois J. Christoffersen
Joanna Ciaglia
Barry & Lorraine Clark
Russ & Nan Clark

Susan Hollis Clayson
Kristie Clemons &
James Markich
Kristine Cloud
Morton Coburn
Bettie J. Coffey
Ronald & Carol Cole
Stephen & Jane Coley
Fred Conrad
John & Diane Conway
Kathleen & Michael Conway
John H. Cooper
Merle R. Cooper
Rita T. Cooper
Michael & Patricia Corbett
Ms. Mary Corrigan
Sally Costello
Beth A. Coughlin &
David D. Wang
Catherine Crino
Karen A. Crotty
Janice & Rick Daitchman
Priscilla M. Daley
Andrew & Lynn Davis
Michael Davis
David DeVries
Robert Delaney
Gordon R. Denboer
Cathleen C. & David Dixon
Susan Dominik
Leo Domzalski
Kathy & Mike Donaldson
Kenneth M. Doody
Anne-Marie Douglas
Patricia Downes
M. Lynne Driver
Charlotte Droogan
Beth Drost
Daniel F. Dugan
Susanne M. Dumbleton
Jacqueline J. Dupon
Barbara B. Durand
Thomas J. Dwyer
Frances W. Edmondson
Mary Anne Edwards
Melanie D. Ehrhart
Paul & Diane Eident

Charles & Carol Emmons
Susan Enright-Davis
Kirby Epley
Paul L. Epner &
Janet Gans Epner
Diane & Bruce Erickson
Tina M. Erickson &
Mike Krutsch
Barbara A. Esposito
James & Rosemary Etter
Lucy Evans
Mary Alice Evans
Jerry & Natalie Fafendyk
James & Carol Fancher
Mary E. Farwell
Daniel Feingold
Patti & Jerry Fellows
Toni & Joel Fenchel
Joyce A. Fernekes
Elaine N. Filus
Norma J. Flynn
Elizabeth K. Fox
Richard & Marguerite Franklin
Marc Frazer & Rick Lenell
Elaine Frick
Daniel & Roxane Friedman
John & Nancy Furr
Elizabeth A. Galiano
Dileep Gangolli
Colleen P. Garard-Dahlem
Shirley Garland
Kenneth A. Gebhardt
Gary & Linda Gephart
Ellen & Paul Gignilliat
Mary Joan Gilmour
Sam J. Giovenco
Allan & Sheila Glass
Michael W. Goettsch
Ethel C. Gofen
Anne & Bill Goldstein
Robert Gordon &
Sophie Haroutunian-Gordon
Eve M. Gorman
Susan & Bruce Gottschall
Sandra L. Grady
Anthony S. Graefe
Richard & Charlene Graf

Jack Graff
Jerry D. Grant
Mary & Richard Gray
Alan & Carol Greene
Diane Gregart
Maureen T. Gregg
Thomas A. Grell
John & Judi Gretz
Dr. Andrew Griffin &
Ms. Moira Collins
Susan Griffith
Diane Grinchuk
Norman & Linda Groetzinger
Brenda & James Grusecki
Nancy L. Haag
Kathleen E. Hackett
Donald & Margaret Haefliger
John & Dana Hagenah
Robert J. Haligas
Jack & Beverly Halvorsen
Paul W. Hamann
Rita M. Hamann
Beatrice A. Hammond
Tom & Nancy Hanson
Warner J. Harris
Maureen L. Hartweger
Malcom & Adele Hast
Patricia J. Haupt
Laurencella Hawkins
Mark & Donna Hayes
Kristine M. Healy
James H. Heard
Kurt & Gayle Hedlund
David A. & Mary Alice S. Helms
Dale & Gloria Henderson
James E. Hennig
Russell & Lisa Henning
Richard Herman
Kittyte Hermes
Dorrit E. Herreid
Paul Herrmann
George Hesler
Katherine & Frederic Hickman
James & Margot Hinchliff
Robert Hinchsliff
Benjamin Ho
Sarah A. Hoban



Patrick J. Kelly
 Karen Kessler
 Marion J. Kierscht
 Michael J. Kiley
 Vertie M. Kinnison
 Renee A. Klak
 Ken Knauf
 Leroy Knohl
 Jan Kodner
 Robert Kohl & Clark Pellett
 Rita Kolkowski
 Arieh Konigl
 Janet & Henry Konkel
 Susan H. Kosinski
 James & Patricia Kowalkowski
 Christina Kozich
 William & Kathryn Ksander
 Dolores Kulick
 Elizabeth A. Kurman
 Marie Kuzniarek
 Amy LaBan
 Carolyn A. Landwehr
 Marti & George Lannert
 Robert & Carleene Laskero
 Gerard & Alice Latus
 Robert Lau
 Mary B. Lavelle
 Bill & Blair Lawlor
 Carl A. Lekan
 Mrs. Frederick R. Lent
 Nancy B. Leonard
 Richard Lewis
 Jean Lieberman
 James & Debra Linday
 Allan J. Lindrup
 Janice Liten & Mike Schnur
 Stephen & Rhonda Little
 Merrily Lockwood
 Ray & Mary Lopata
 John & Susana Lopatka
 Maureen & Theodore Lucore
 Carlene Lutz
 Susan Lutz
 Patricia C. Lydon
 Patricia Lykins
 Phyllis Lyons
 Jim & Kay Mabie
 John & Bette MacLennan
 Kathleen & Joseph C. Madden
 Josephine Mago

Anne & Robert Mair
 Richard M. Majko
 Anna Marek
 Queen Ann Marsh
 Elaine Martin
 Steve Martin
 Magdalena E. Martinez
 Diane L. Martling
 John & Mary Marusek
 Andrew & Kelly Masse
 Mary P. Massery
 Susan F. Maul
 Sam Mauro
 Eva B. Mayer
 Ted & Almeda Maynard
 Thomas & Mary Ann Mazukelli
 Thomas & Lorraine Mazza
 Charlaine McAnany
 Brian & Sue McCleish
 Laurie B. McCollum &
 Carl W. Warschausky
 Geri McCormick
 Paula J. McCracken
 Kay W. McCurdy
 John McElroy
 Karen McGinnis
 Marnie McHale
 Gerald & Deborah McIlvain
 Marguerite Savard McKenna
 Jane C. McLagan
 Kari McLean
 Bozena & John McLees
 Marcelle McVay &
 Dennis Zacek
 Jim & Sue Medd
 Claretta Meier
 David & Patti Melzer
 JoAnn Metternich
 John & Anne Miller
 Patricia K. Miller
 William F. Miller
 Samuel & Mary Mirza
 Ed & Marcia Moore
 Oscar Moore, Jr.
 Anne D. Morgan
 John & Naomi Morris
 William & Nancy Morse
 Gregg & Betty Morton
 Jim Motzer
 Joan C. Mudd

Laura Mueller
 Mary Jo & Tom Mulcahy
 Mary C. Mulcrone
 John & Mary Kay Mulvaney
 Monica Murtha
 Paul & Nancy Nabor
 Pat & Jim Nack
 Stephen Nelson
 Sandra K. Newman
 Earl A. Nienhuis
 Margaret & Edward Niimi
 William & Judith Noelle
 Marilyn Noettl
 Rita M. Novak
 Peter & Joan Novick
 Carol L. O'Brien
 Robin Winter Odem
 Frances M. O'Hern
 Leonard & Carol Oleferchik
 Mark & Rosaline Oppenheim
 Everett & Elizabeth Ortiz
 William & Cathleen Osborn
 Ronald & Linda Osikowicz
 Richard A. Ott
 Denis & Maureen Owens
 Helen J. Owens
 Thomas A. Pacyga
 Amy E. Pagliarella
 Catherine Painter &
 Christopher Brandely
 Arthur Palmer & Pamela Gellen
 Marilyn Palmer
 Patrick Palmer
 Carmen B. Pappas
 Robert Parsons
 David & Nora Paulson
 Helen Pavia
 Maureen & Richard Pekosh
 Anita M. Pellettiere
 Richard S. Penner
 Elaine & Russell Peppers
 Martin Perry & Barbara Williams
 Ed Peters
 Joy L. Peters
 Patricia Anne Petersen
 E. Scott Peterson &
 Judith M. Desenis
 Richard Peterson &
 Rev. Wayne Bradley
 Walter & Kathleen Peterson

Valerie Hoffman-Hatcher
 Mr. & Mrs. James S. Hogan
 Shannon C. Hogan
 Harriet Holderness &
 Jim Luebchow
 Norman & Barbara Hollenberg
 James & Wanda Hollensteiner
 Rev. Gloria G. Hopewell
 Judi L. Hopkins
 Karen T. Horan
 Melvin J. Howard
 Jane Trueheart Huels
 Pamela K. Hull
 Susan B. Humphrey
 Myra Hurst
 Margaret Hutchings
 Sarah & Robert Hutchins
 Peter & Tamara Jaffe-Notier

Theresa Janczy
 Robert & Beth Ann Janssen
 Susan Janus
 Geri Jarzombek
 Mr. & Mrs. Carl Johanson, Jr.
 Evelyn A. Johnson
 George & Joan Johnson
 John & Nancy Johnson
 Sharon M. Johnson
 Walter & Laurel Jonas
 John O. Jones
 Laura J. Judge
 Paul E. Jurewicz
 Richard A. Jurs
 Mr. & Mrs. Gregory Kaczmarek
 Howard F. Kapso
 Marilyn Karsh
 Patrick & Kathleen Kearns

Robert Pfutzenreuter
 Elizabeth Baldwin Phillips
 Karen & Dick Pigott
 Carol & Hadley Pihl
 Betsy L. Pilmer
 Michael & Joan Pine
 Lee T. Polk
 Anne F. Pollock
 King & Hope Poor
 Robert & Joan Pope
 Christina Porterfield
 Gwen Potucek
 Christy Prassas
 Stephen T. Pratt
 Raymond & Adele Prendergast
 Marc Primack
 Ken Printen
 Michael & Virginia Prisco
 Sam & Barbara Psimoulis
 Nancy Quinn
 Steven R. Radtke
 Elizabeth L. Raiman
 Angelina E. Ramirez
 Clarence Rance &
 Carmen Flores-Rance
 Jon Rasmussen
 Jeffrey G. Reber
 Robert Reeb
 Frances S. Reedy
 Corrine Reichert
 Miriam Reitz
 Sandra Remis
 Mabel L. Rice
 Maryse Richards &
 Brandon Taylor
 Ronald & Elizabeth Richards
 Ann T. Richter
 Christopher P. Riff
 Dr. Edward O. Riley
 Angela Rinaldi
 Gerald Rizzer
 Darlene & Rick Roberts
 Lois H. Robinson
 Virginia Robinson &
 Emile Karafiol
 Ruth Rodriguez
 Glori Rosenon
 James & Roseanne Rosenthal
 Warner A. Rosenthal
 Rob & Susan B. Ross

Mr. & Mrs. John W. Rowe
 Lawrence P. Rowells
 Andrew D. Rowlas
 Bernard M. Rupe
 Lorraine L. Sackeck
 Alan Saleski
 Ronald D. & Joyce A. Salfisberg
 Joseph C. Salvato
 Alan Sanchez
 Karen T. Santelli
 Robin & Paul Saydak
 Jamee Schafehen
 Rhonda & Gary Scheller
 Mary E. Schmuttenmaer
 Karen & Frank Schneider
 Dorothy Schreiner
 Arlene D. Schultz
 Catherine & Paul Schultz
 Dennis M. Schwank
 David Y. Schwartz
 Terry Schy
 Marilyn & Stephen Scott
 Miriam Basch Scott
 Mary Sebahar & William Clary
 Jennifer E. Seidelman
 Michele A. Semisch
 Charles Sennet
 Mr. & Mrs. William N. Setterstrom
 Richard J. Shaftic
 Margaret Shaklee &
 Hillis Howie, Jr.
 Kevin Shanley
 Leah Ann Shapiro
 Phillip Shayne
 Donald Sheber &
 David Wywialowski
 Barbara Shepard
 Timothy C. Sherck
 Anne Sherren
 The Sidan Family
 Patricia Sikorovsky
 Michael A. Silver
 Debbie & Bernie Simon
 Elizabeth M. Simpkin &
 David L. Wetherbee
 Dick Simpson
 Patricia L. Skalka
 Rose Ann Skirha
 Kathy Slezak
 Suzanne T. Smart

Bruce L. Smith
 Matthew D. Smith
 Mary Ann Sorokie
 Marguerite & Stephen Spangehl
 Darolyn & Robert Spannuth
 Susan C. Spengler
 Arthur Spooner &
 Sharon Watts-Spooner
 Paul & Janice Springborn
 Nancy C. Stachnik
 Thomas & Helen Stanton
 Charles & Joan Staples
 Sylvia V. Stec
 Gabriella Stein
 Daniel R. Steiner
 Julia C. Stepp
 George & Linda Stevenson
 Herman Stille
 Mr. & Mrs. H. T. Stowell
 Maryann G. Strain
 James Strait & Janina Levy
 Carol Strasser
 Arthur & Alice Stratemeyer
 Leonard G. Strauch
 Bert O. Sullivan
 Daniel & Elizabeth Sullivan
 James P. Sullivan
 William Sullivan, Jr.
 John & Margaret Sundolf
 George F. Sutherland
 Becky Sutton
 David & Chris Suwanski
 Tom Swanson &
 Jo-Ellyn Dorsey Swanson

Gerard A. Swick
 Sven & Julie Sykes
 Pam & Tim Szerlong
 Dorothy T. Tannenbaum
 Tod Tappert & John Gallagher
 A. Robert & Barbara Taylor
 The Ellis/Ohl Fund,
 a Donor-Advised Fund at the
 Chicago Community Trust
 Shanthi Thiruthuvadoss
 Albert & Linda Thomas
 Jacqueline & John Thompson
 Marguerite B. Thompson
 Dennis W. Thorn &
 Jianghong Li
 Frank & Nina Thorp
 Mary A. Tierney
 Mr. & Mrs. William R. Tobey, Jr.
 Dale Todd
 William & Christine Tompsett
 Marianne Tralewski &
 Harry Dennis
 Swanette Triem
 Richard E. Trueheart
 Jenny Tsang
 Kenneth & Barbara Turner
 Richard B. Turner
 John & Virginia Ulaszek
 Henry & Janet Underwood
 Denise F. Ursini
 Laura Vallone
 Dr. & Mrs. W. B. Van De Graaff
 Anne M. Vekich

Nancy Vincent
 Kathleen Vito
 Janet S. Volk
 Barbara Voorhees
 Herschel & Gale Wallace
 Baron Waller
 John J. Walsh
 John & Carol Walter
 Barbara A. Warren
 Peter & Margaret Watt-Morse
 Janice Weathington
 Norman & Harriet Wechter
 Brian Wells
 Wilma E. Wendt
 James G. Wilcox
 Linda & Payson S. Wild, Jr.
 Diane Williams
 R. Bruce Williams
 James D. Wiltshire, Jr.
 Alain & Barbara Wood-Prince
 Michael & Mary Woolever
 Anna Jean Woroch
 Jane Stroud Wright
 Sharon Yetter
 Julie Yocom
 Lisa B. Yondorf
 Curtis & Deborah Yoshizumi
 Joann Young
 Kevin & Barbara Young
 Trudi Zbinden
 Dr. Lawrence &
 Judith Zimmerman
 John F. Zissis



IN KIND DONATIONS

Congregations

Acacia Park Evangelical Lutheran Church, Norridge
All Nations Worship Assembly, Chicago
Anshe Emet Synagogue, Chicago
Augustana Lutheran Church, Hobart
Bethany United Church of Christ, Chicago
Carter-Westminster United Presbyterian Church, Skokie
Christ Church of Chicago, UCC
Christ Lutheran Church, Chicago
Christ the King Catholic Church, Chicago
Christian Church of Arlington Heights
Congregation B'Nai Jehoshua Beth Elohim, Deerfield
Congregation Sukkat Shalom, Wilmette
Congregational Church of Jefferson Park, Chicago
Congregational UCC of St. Charles
Covenant Presbyterian Church, Chicago
Dyer United Methodist Church
Edgebrook Community Church, Chicago
Edison Park Lutheran Church, Chicago
Epiphany Lutheran Church, Elmhurst
Epiphany United Church of Christ, Chicago
Faith United Methodist Church of Orland Park
First Congregational Church of Western Springs
First Presbyterian Church of Deerfield
First Presbyterian Church of Wilmette

First United Methodist Church, Oak Park
First United Methodist Church of Park Ridge
Frances Xavier Warde School, Chicago
Franciscan Friars, Chicago
Friendship Presbyterian Church, Chicago
Glencoe Union Church
Glenview Community Church
Glenview United Methodist Church
Grace Lutheran Church & School, River Forest
Greater Faith Ministries International, Chicago
Hillel at Loyola, Chicago
Hinsdale Youth Outreach
Holy Family Church, Chicago
Holy Trinity Lutheran Church, Glenview
Immaculate Conception Church, Chicago
Immanuel Lutheran Church, Evanston
In Praise of Jesus Community Service Ministry, Glendale CA
Irving Park Lutheran Church, Chicago
Irving Park United Methodist Church, Chicago
Ivanhoe Congregational Church, Mundelein
Lake Street Church, Evanston
Light of Christ, Algonquin
Lutheran Church of the Ascension, Northfield
Martin Luther Church, Chicago
Mercy Gate International, Palos Heights
Morton Grove Community Church
New Life Lincoln Park - Homeless Ministry
Northbrook United Methodist Church

Northminster Presbyterian Church, Evanston
Old St. Patrick's Church, Chicago
Our Lady of Ransom, Niles
Park Ridge Presbyterian Church
Peace Lutheran, Canton
Pilgrim Lutheran Church and School, Chicago
Presbyterian Church of Western Springs
Presbytery of Chicago
Prince of Peace Lutheran Church, Addison
Queen of All Saints Basilica, Chicago
Ravenswood Fellowship United Methodist Church, Chicago
Resurrection Lutheran Church, Chicago
Saints Faith, Hope & Charity Catholic Church, Winnetka
Seventh Presbyterian Church, Chicago
Silverstein Base Hillel, Metro Chicago Hillel
Sojourner's Pub Church, Clarendon Hills
Southminster Presbyterian Church, Arlington Heights
St. Andrew Greek Orthodox Church, Chicago
St. Bonaventure Church, Chicago
St. Celestine Church, Elmwood Park
St. Clement Church, Chicago
St. David's Episcopal Church, Glenview
St. Genevieve Catholic Council of Women Ministry, Chicago
St. Genevieve Parish, Chicago
St. Isaac Jogues Catholic Church, Niles
St. John UCC, Arlington Heights
St. John's Episcopal Church, Chicago
St. John's Evangelical Lutheran Church, Wilmette

St. Pauls United Church of Christ, Chicago
St. Peter's Episcopal Church, Chicago
St. Peter's United Church of Christ, Elmhurst
St. Peter's United Church of Christ, Skokie
St. Philip Lutheran Church, Glenview
St. Teresa of Avila Catholic Church, Chicago
Temple Chai, Long Grove
The Cathedral Church of St. James, Chicago
Union Church of Hinsdale
United in Faith Lutheran Church, Chicago
Wicker Park Lutheran Church, Chicago
Winnetka Congregational Church
Woman's Society of First Congregational Church of Western Springs
Women of the Evangelical Lutheran Church of America, Chicago

Foundations, Corporations, Government, Schools & Community Groups

#Selfless for Scott
16 On Center
57th Street Books
A Red Orchid Theatre
ABA Legal Education
Access Contemporary Music
Adams Elevator Equipment Co.
Alexandra Marks Jewelry
All Cycles
All Rise Trading
Allyu Spa
Alpha Baking Co.
Alpha Kappa Alpha Sorority, Inc.

Amazing Chicago Funhouse
Maze
Amazing Edibles Catering
American Airlines
American Bar Association
Homeless Youth Legal Network
American Hospital Association
Andie's Restaurant
Andrew Jackson Language Academy
Asian Human Services
AmeriCorps Program
Barnes & Thornburg LLP
BBYO
BDO USA, LLP
Bears Care
Bernard Zell Anshe Emet Day School
Blake's Seed Based
Blinderman Construction
Boka Restaurant Group
Bombas
Br. David Darst Center
Bradford Portraits
Broadway in Chicago
Bubbles Academy
Buckingham Hotel
Buffalo Grove Garden Club
Cafe Selmarie
Capital One
Charles Schwab & Co., Inc.
Charter Steel Trading Company
Chateau Grand Traverse Winery
Chi Gives Back
Chicago Athletic Clubs
Chicago Beer Experience
Chicago Botanic Garden
Chicago Bridge Project
Chicago History Museum
Chicago Methodist Senior Services
Chicago Public Radio, WBEZ
Chicago Sinfonietta
Chicago Stagehand
Chicago Symphony Orchestra
Chicago White Sox
Chicago Wolves

Chicago Zoological Society
 Christy Webber Landscapes
 Farm & Garden
 Church Street Brewing Company
 Claridge House Chicago
 Claro Healthcare
 Clorox
 Coda di Volpe
 Columbia College, Student
 Government Association
 ComEd
 Constellation Brands, Inc.
 Coonley School, Chicago
 Coopers Hawk Winery
 CorePower Yoga
 Cortland Capital Market Services
 Court Theatre
 Courtyard by Marriott
 Cross Town Fitness
 Cubs Care, a McCormick
 Foundation Fund
 Cycle Forward
 D4 Irish Pub
 Davis Theatre & Carbon Arc Bar
 Decatur Classical School
 Del Friscos Double Eagle
 Steakhouse
 DePaul University Steans Center,
 Chicago
 Designs for Dignity
 DeSoto House Hotel
 Dine Amic
 Dinkel's Bakery
 East Bank Club
 Echo Pride
 Eclipse Theatre Company
 Edgebrook Elementary School
 Edgebrook Woman's Club
 Elizabeth Arden Red Door
 Salon & Spa
 Elmhurst College Residence
 Hall Association
 Enjoy, An Urban General Store
 Epsilon Enterprise Diversity &
 Inclusion Council
 Escape Artistry
 Fitch Ratings
 FlowKits
 Formento's, B. Hospitality Co.
 Freddie Mac

Gage Hospitality Group
 Gene Siskel Film Center
 Genentech
 Gethsemane Garden Center
 GFOA
 Gino's East
 Global Lingo Inc.
 Goodman Theatre
 Google Chicago
 Grand Lux Cafe
 Guildhall Restaurant
 Gus Giordano Technique School
 Hair Cuttery/Ratner Companies
 Haley Family Foundation
 Half Acre Beer Company
 Hardware Crossfit
 Heaven's Door Whiskeys
 Hesperia Lodge No. 411
 Hogsalt Hospitality
 Hotel Zachary
 Hu-Friedy Mfg. Co.
 Hyatt Regency McCormick Place
 Imanage LLC
 IMC Chicago Charitable
 Foundation
 Innovative Dining Group
 International Montessori School
 Irving Harris Foundation
 Jack Ringer Family Foundation
 Janko Hospitality Group
 Jewish Child and Family Services
 Joffrey Ballet
 Jones Day
 JPMorgan Chase
 Justin Wynn Leadership
 Academy
 Katherine Anne Confections
 Kendra Scott
 Ketchum Inc.
 Kimpton Journeyman Hotel
 Kingston Mines
 Kohl Children's Museum of
 Greater Chicago
 Koval, Inc.
 Kurgo Foundation
 Lake County Animal Care &
 Control
 Latham & Watkins LLP
 Latin School of Chicago
 Laugh Factory Chicago



Lenovo Foundation
 Levy Restaurants
 Libertyville H.S. GSA
 Lifeline Theatre
 Lillstreet Art Center
 Little Beans Cafe
 Lou Malnati's Pizzeria,
 Malnati Organization
 Lucky Strike
 Lynfred Winery, Inc.
 Marianne Strokirk Salon
 Mather High School, Chicago
 McDonald's Corporation
 McKinsey & Company
 Metea Valley High School
 Metric Coffee Co.
 Metropolitan Performing
 Arts Centre
 Mid City Nails
 Munster Restaurant Group
 Music Box Theatre, Chicago
 Music Institute of Chicago
 Music of the Baroque

National Charity League
 Navy Pier
 Niles West High School
 North Shore Distillery
 Northern Sky Theater
 Northern Trust
 Northwestern University
 Oceanique, Evanston
 Off Color Brewing
 Old Orchard Junior High School
 OUT Law @ Northwestern
 Out@Morningstar
 Peak Running
 Peco Pallet
 Peggy Notebaert Nature
 Museum
 Peoples Gas
 PepsiCo
 PFLAG Hinsdale
 Pinoy Power group
 Porchlight Music Theatre
 Portage Park School, Chicago
 Prairie Grass Cafe

Prairie Krafts Brewing Co.
 Proxi & Sepia
 Pump It Up Chicago
 Purple Monkey Playroom
 Quarles & Brady LLP
 Quincy Street Distillery
 Raila & Associates P.C.
 Ravenswood Community
 Childcare Center
 Reggies
 Residence Inn Magnificent Mile
 Resurrection University, Chicago
 Revolution Brewing
 Ridman's Coffee
 Rivers & Rittergut Restaurants
 Riverside Masonic Lodge No 862
 Road Runner Sports
 Robert Campbell Fine Portraiture
 Roeser's Bakery
 Rotary Chicago Lakeview
 Rotary Club of Des Plaines
 Ruby Room
 Rush University Medical Center

Sacred Heart Schools
 Saint Andrew Girl Scout
 Troop 20073
 Salon Buzz
 Salon Roula, Evanston
 Sandstorm Design
 Sardine
 Security Capital Research &
 Management
 Shakou Cares
 Sisters Investing In Souls
 Skydeck Chicago
 Sleeping Village
 Sobelmans Pub & Grill
 Solemn Oath Brewery
 Sonia Friedman Productions
 Spacca Napoli Pizzeria
 Spinning J
 Split Rail
 Spotify
 Sprinkles Cupcakes
 St. Ignatius College Prep -
 Volunteer Corps
 Steep Theatre Comoany
 Steppenwolf Theatre Company
 Stone Academy
 Strawdog Theatre Company
 Sunstar Americas, Inc.
 Sweet Mandy B's Bakery
 Sweetwater Tavern & Grill
 Synchrony Financial

Target Corporation
 Taureaux Tavern
 Temperance Beer Co.
 The Actors Gymnasium
 The Adler Planetarium
 The Angel Team
 The Annoyance Theatre & Bar
 The Bank of America Charitable
 Foundation, Inc.
 The Book Cellar
 The Cheesecake Factory
 The Chicago Bulls
 The Chicago Mosaic School
 The Club at Strawberry Creek
 The Dewan Foundation
 The Drake, A Hilton Hotel
 The Emil Bach House
 The Field Museum of Natural
 History
 The Free Toes
 The Front Room
 The Harbor Grand Hotel
 The IO Theater
 The Magic Penthouse
 The Nature Conservancy
 The Neo-Futurists
 The Peninsula Chicago
 The Reva & David Logan
 Foundation
 The Ruth Page Center
 for the Arts

The Second City, Inc.
 The Service Club of Chicago
 The Social Table
 The Stained Glass
 The Volunteer Center of
 New Trier Township
 The Wheelhouse Hotel
 The Whitehall Hotel, Fornetto
 Mei Restaurant
 The Wine Goddess
 TimeLine Theatre Company
 Toho Technology Inc.
 Transfer Pizzeria Cafe
 Trattoria Demi
 Tula Yoga Studio
 Tweet, let's eat
 Twin Anchors Restaurant
 & Tavern
 Twisted Scissors
 Tyson Foods
 U.S. Cellular
 Uber Freight
 UBS All Bar None -
 Chicago Chapter
 UChicago Divinity School
 Uncommon Ground
 Urban Athlete
 Vaughn Occupational
 High School
 Victory Gardens Theater
 Virgin Hotels Chicago
 Vistex
 Vivettes
 VPC Pizza Truck, LLC
 Waldorf Astoria Chicago
 Walter Payton College Prep
 West Leyden High School
 Service Club
 West School, Glencoe
 Westmont High School
 Whitney Young Magnet High
 School, Chicago
 Willow Room
 Windy City Playhouse
 Wines For Humanity
 Winnetka Youth Organization
 Writers Theatre
 Yello
 Youth 2 Youth
 Yugen

Zanies Comedy Club
 ZS Associates

Individuals

Anonymous (7)
 Elizabeth Adetoro
 Daniel Alter
 Jen & Ben Applegate
 Erin Archer
 Mary Arlandson
 Tamra Armour
 Stephanie Atella
 Kathleen Austin
 Giselle Avelar
 Joanne Baker
 Michael & Veronica Baker
 Robert A. Barba
 Beatrice Barbareschi
 Kelly M. Barnes
 Gavin & Mishka Bautista
 Allie Beck
 Robyn Becker
 Sydney Dion Bennett
 Jacqueline Blake
 Fran Block
 Michael V. Borromeo
 Alison Bouchard
 Kristen Bouchard
 Shawna Bowman
 Jennifer & Tom Bradley
 Nancy Bradney &
 Sam Peltzman
 Mellanie K. Brennan
 Wendy Bright
 Deborah Brown
 Gintas Buinevicius
 Linda & Dan Burns
 Livia Buzatu
 Evan & Brian Callan
 Stacey Chappell
 Lainey & Tommy Clark
 Robin & Randy Cohen
 Colburn Family
 Ronald & Carol Cole
 Merle R. Cooper
 Sonia R. Corrigan
 Alexa Cottrell
 Heather Cox
 Kristi Dahm &
 Brian Herman

Tom & Julie Danilek
 Kim & Nic Dasovich
 William De Luca
 Amy DeLorenzo
 Kathy Deveny
 John DiMucci
 Eireann Dolan
 Margaret Dolan
 Tiffany D. Dorris
 Debbie & Steven Dresner
 Katie Dunne
 Geralyn Eckert
 Emily Einbecker
 Judy Ekblad
 Heather Eloff
 Ben Epstein
 Monica Faber
 Darren Feld
 Leslie Finkel
 Phoebe Fisher
 Cynthia M. Flores
 Gary Fox
 Elizabeth France
 Amy Frankel
 Carrie Freitag
 Roni Friedman
 Carol Bates
 Renee Gatsis
 Amanda Goldstein
 Anne & Bill Goldstein
 Corinne Goodman
 Alan & Carol Greene
 Jaime & Dan Grigorescu
 Tim & Alice Gustafson
 Sue Haberkorn
 Lori & Mark Hamann
 Rita M. Hamann
 Rita Hamby
 Carolyn Hankins-Page
 Thomas Hanson
 R. Carr Harkrader
 Elizabeth Harris
 Phyllis Glink Harris &
 Ian Harris
 Janet R. Hasz & Tom Golz
 Adrienne Hawthorne
 Nichole Hembree
 Barbara Hendrickson
 Gina Henry &
 Shenee L. Howell



Robert Hinchliff
 Donna Hippensteel
 Lisa Horn
 Patty & Tom Houlihan
 Rochelle Jackson
 Timothy Jasaitis
 Norman Jeddeloh
 Kathryn June Jewell
 Jett Johnson
 Vincent & Jang Mi Johnson
 Kalee Johnston
 Gail Kahn
 Trisha Kara
 Mike Kassarian
 Olivia Kearns
 Brooke Keeton
 Judi Keippel
 Susie Kelly
 Lynn Kendall
 David King
 James & Ozana King
 Miss Kitty
 Kpoene Kofi-Bruce
 Carol Krak-Ventrella
 Janine Landow-Esser &
 Jeff Esser
 Ellen Lebowicz
 Matthew Lee
 Tim Lehman
 Cindy Leman
 Rebecca Lieberman
 Alex Linden
 Mary Luchswiger
 Jo Ann Lynn
 Colleen M. MacKimm
 Carol & Ben Mackoff
 Janet Mahany
 Jeremy W. Majors
 Erin Malloy
 Jana & Ken Mann
 Debra Mansen
 Michael Margolis
 George P. Martin -
 Security Traders Association
 of Chicago/Penserra Charity
 Committee
 Dylan Mazzanti
 Lauren McDonnell
 Stephanie M. Mckinley

Kari McLean
 McMahan/Haramaras/
 Smialek families
 McWard Family
 Brandon Meister
 Jennifer Mesterharm
 Carrie Miller
 Kathleen Miller
 Catherine & Leo Miserendino
 Ashley Mogayzel
 Kimberly & Michael Moran
 Vanessa Moreno
 Gabe Munoz
 Heather J. Nash
 Nadia Neimanas
 Andy Nelson
 Mihaela Nemes
 Sioux Nesi
 Eden Newmark
 Vereen Nordstrom
 James Nunn
 Courtney O'Connor
 Sharon & Ken Ogorzalek
 Dave Ortman
 Jason Page
 Catherine Painter &
 Christopher Brandely
 Miriam Pasquier
 Ankita Patel
 Dan Paterno
 Barbara & Robert P.
 Perkaus, Jr.
 Betsy & Mike Peska
 Matthew Peters
 Emma Peterson
 Debra Petritsch
 Stephanie Philpott-Jones
 Margaret Pike
 Cheryl Pisciotti
 Lauren Pollack
 Alicia & Peter Pond
 Nathaniel Pond
 Marcia Prichason
 Stephanie Probst
 Mary Rapp
 Ali Riahi
 Ellenor Riley-Conditt
 Chuck & Cathy Ripp
 Susan Roach

Marlen Rosales
 Marcia Rubenstein
 Jill & Allan Ruter
 Erika & Jorge Salazar
 Rhonda & Gary Scheller
 Seth Schindehette
 Jodi L. Schubert
 Carol & Stuart Schweidel
 Zachary Siegel &
 Logan Stohle
 Patricia Sikorovsky
 Polly & Rodney Sippy
 Patricia L. Skalka
 Snyder Family
 Somers Family
 Peter Sorel
 Deborah Spitz &
 Tamar Westphal
 Ladonna Stokes
 Olivia Sulita
 David & Chris Suwanski
 Diane & Richard Suwanski
 Tan Family
 Jamie Tanen
 Brennan Taylor
 Alexander Terdik
 Robin Terry
 William Thompson
 Andrew Thorrens &
 Don Mizerk
 Matt Tobin
 Mary Kay Treasure
 Eloy J. Trevino
 Tim Trsar
 Nick Ventola
 Joan & John Wallgren
 Dan Weiland
 Kelly F. Weiss
 Joan L. Wilcox
 Williams Family
 Nicole Williams
 Sandi Wisenberg
 Lucy Wolkober
 Ellen K. Wondra
 William Wylie
 Gina Yacoub
 Annika M. Young
 Mike & Robin Zafirovski
 Beth Ann & Brad Zerman

THE LEGACY SOCIETY

*Recognizes individuals and couples who
 have included The Night Ministry in their will.*

Paula & Gordon
 Addington
 Geoffrey A. Anderson
 Lorraine and Randy Barba
 Barbara Bolsen
 Charlene Cepek
 Sharon Cole
 Marlene Denz
 Ronald F. Duda
 Rosemary Duvall
 Melanie D. Ehrhart
 Tina M. Erickson &
 Mike Kruttsch
 Fred & Sarah Flosi
 Anne & Bill Goldstein

Edie & Mark Hickman
 Ike P. Hong
 Sharon M. Johnson
 Laura H. Kracke
 James F. Lacy
 Anna Lee
 Dona & Andrew Mendez
 Richard S. Penner
 JoAnn M. Rapp
 Lois H. Robinson
 Peter Sorel
 Lee Strouse
 Susan & William
 Vanderberg
 Anna Jean Woroch







**THE NIGHT
MINISTRY**[®]

MAILING ADDRESS: 4711 N RAVENSWOOD AVE, CHICAGO, IL 60640
www.thenightministry.org Phone: 773-784-9000 Fax: 773-784-5865

